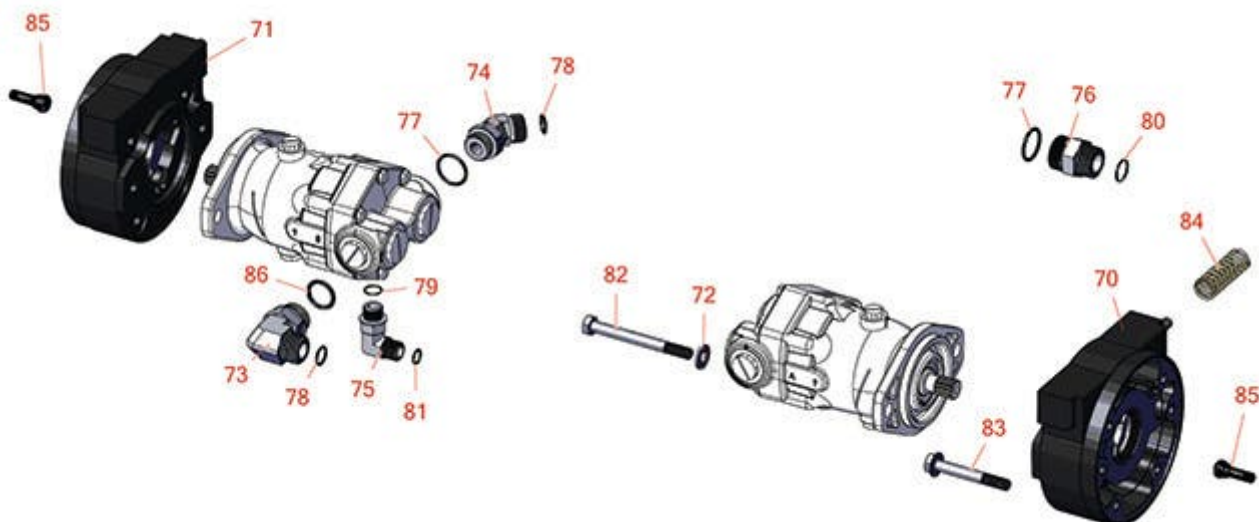




Replaces Toro Groundsmaster 4700-D Parts

*Traction Unit - Model 30868
Front Drive and Brake*



All original equipment manufacturers names and part numbers are used for identification purposes only, and we are in no way implying that our products are original equipment parts. Prices subject to change without notice.



Replaces Toro Groundsmaster 4700-D Parts

*Traction Unit - Model 30868
Front Drive and Brake*



Item No	R&R Part No.	OEM Part No.	Description	Qty Req	Order Quantity
70	R100-3070-03	100-3070-03	Brake Assy - LH	1	
71	R100-3069-03	100-3069-03	Brake Assy - RH	1	
72	R3256-26	01-166-0540, 01-166-0820, 17-2530, 24-13-BD, 30-8570, 3256-26, 356206, 48-9390	Washer - 1/2 in	4	
73	R340-142	340-142, 95-1692	Hydraulic Fitting - 90 Deg	2	
74	R100-5530	100-5530, 98-0657	Hydraulic Fitting - 45 Deg	2	
75	R340-98	340-98	Hydraulic Fitting	2	
76	R104-3797	104-3797	Hydraulic Fitting - Striaight	4	
77	R237-146	237-146, 340-146	O-Ring	4	
78	R237-58	237-58	O-Ring	4	
79	R237-79	237-79	O-Ring	2	
80	R340-65	340-65	O-Ring	4	
81	R237-30	23-6320, 237-30	O-Ring - Seal	2	
82	R33116-120	33116-120	Bolt - M12-1.75 x 120mm Hx HD	4	
83	R33106-090	33106-090	Bolt - M12-1.75 x 90 Fl Hex HD Gr 8.8	8	
84	R94-3088	94-3088	Spring - Compression	2	
85	R232-24	232-24, 232-35	Stem - Valve w/ Cap	2	

All original equipment manufacturers names and part numbers are used for identification purposes only, and we are in no way implying that our products are original equipment parts. Prices subject to change without notice.



Replaces Toro Groundsmaster 4700-D Parts

*Traction Unit - Model 30868
Front Drive and Brake*



Item No	R&R Part No.	OEM Part No.	Description	Qty Req	Order Quantity
86	R237-81	237-81, 237.81, 327-81	O-Ring	2	

All original equipment manufacturers names and part numbers are used for identification purposes only, and we are in no way implying that our products are original equipment parts. Prices subject to change without notice.