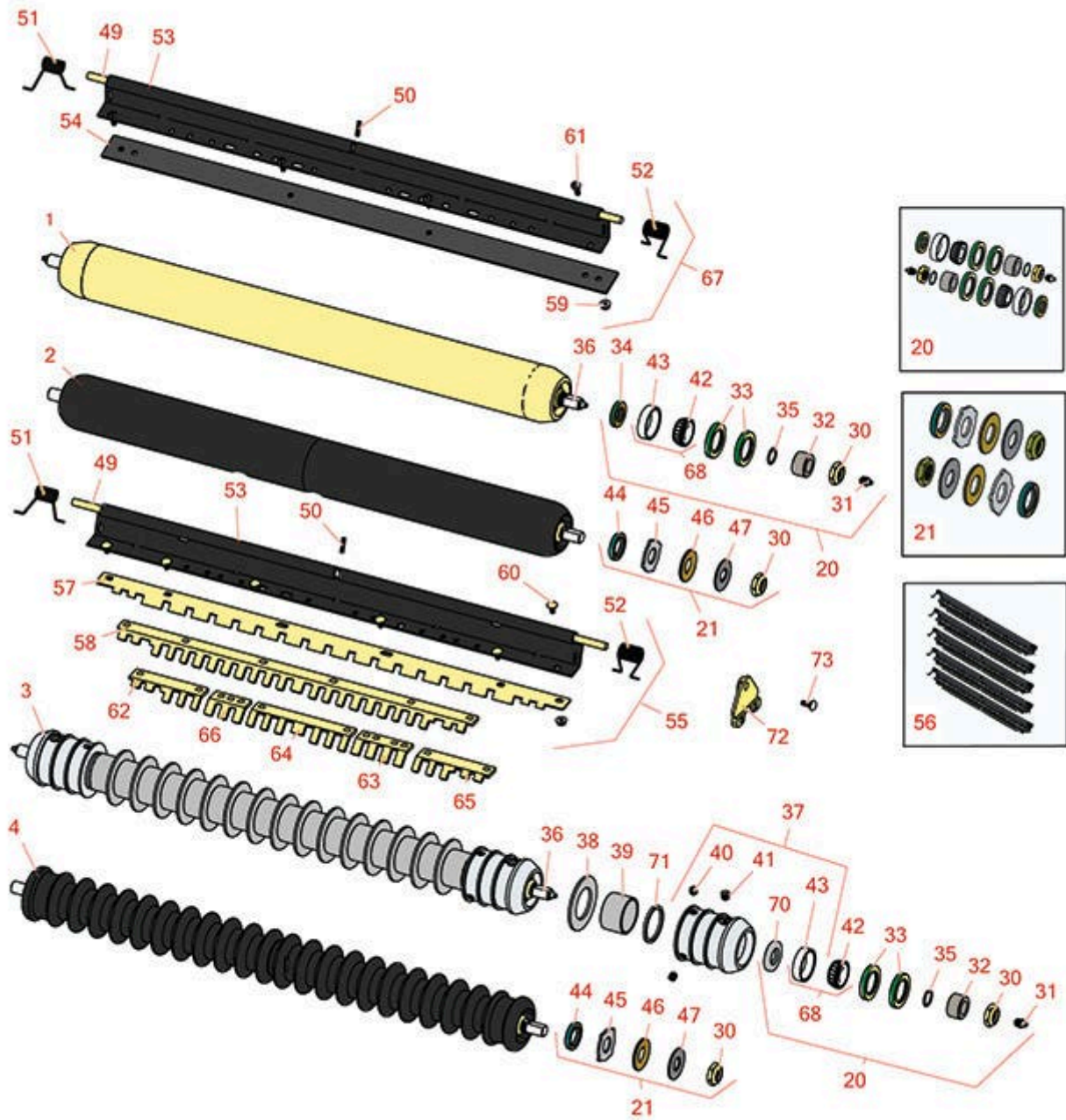




Replaces John Deere 365 Hydraulic Gang Mower Parts

ESP Cutting Unit
Rollers

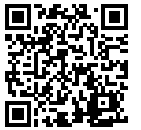


All original equipment manufacturers names and part numbers are used for identification purposes only, and we are in no way implying that our products are original equipment parts. Prices subject to change without notice.



Replaces John Deere 365 Hydraulic Gang Mower Parts

ESP Cutting Unit
Rollers



| Item No | R&R Part No. | OEM Part No. | Description | Qty Req | Order Quantity |
|---|------------------|----------------------|---|---------|----------------|
| 1 | RAET10873 | AET10873, AMT2961 | Roller - Smooth Tubular Steel 26 | 0 | |
| <i>Detail Description: Constructed with a through shaft, this heavy duty roller uses greasable tapered bearings for extended life.:</i> | | | | | |
| 1 | RAMT1056 | AMT2976 | Roller - Smooth Heavy Duty Tubular Steel - 30 | 1 | |
| <i>Detail Description: Constructed with a through shaft, this heavy duty roller uses tapered bearings for extended life.:</i> | | | | | |
| 1 | RAET11265 | AMT2969 | Roller - Smooth Heavy Duty Tubular Steel - 26 | 1 | |
| <i>Detail Description: Constructed with a through shaft, this heavy-duty roller uses tapered bearings for extended life.:</i> | | | | | |
| 2 | R1203610 | | Roller - Smooth UHMW Polyethylene | 0 | |
| <i>Detail Description: Machined from solid UHMW, this low maintenance roller uses a 1" solid stainless steel shaft and requires no grease. UHMW material prevents build-up of debris.:</i> | | | | | |
| 3 | R500508 | | Roller - Grooved Repairable Steel | 0 | |
| <i>Detail Description: Constructed with a through shaft and greasable ball bearings, this roller can be repaired by unscrewing the ends and replacing the series of washers and spacers.:</i> | | | | | |
| 3 | R500514 | AMT2977, BM25319 | Roller - Grooved Repairable Steel - 30 | 1 | |
| <i>Detail Description: Constructed with a through shaft and greasable ball bearings. This roller can be repaired by unscrewing the ends and replacing the series of washers and spacers.:</i> | | | | | |
| 3 | R500509 | AMT2968, BM25318 | Roller - Grooved Repairable Steel - 26 | 1 | |
| <i>Detail Description: Constructed with a through shaft and greasable ball bearings. This roller can be repaired by unscrewing the ends and replacing the series of washers and spacers.:</i> | | | | | |
| 4 | R1203600 | | Roller - Grooved UHMW Polyethylene | 0 | |

All original equipment manufacturers names and part numbers are used for identification purposes only, and we are in no way implying that our products are original equipment parts. Prices subject to change without notice.



Replaces John Deere 365 Hydraulic Gang Mower Parts

ESP Cutting Unit
Rollers



| Item No | R&R Part No. | OEM Part No. | Description | Qty Req | Order Quantity |
|---------|--------------|--------------|-------------|---------|----------------|
|---------|--------------|--------------|-------------|---------|----------------|

Detail Description: Machined from solid UHMW, this low maintenance roller rotates around a 1" solid stainless steel shaft and requires no bearings or grease. Patented groove design and smooth UHMW material prevents build-up of debris:

Overhaul Kits

| | | | | |
|----|------------------|----------|-----------------------|---|
| 20 | RAET10632 | AET10632 | Overhaul Kit - Roller | 0 |
|----|------------------|----------|-----------------------|---|

Detail Description: Includes 4 ea: RET15755 Seal; 2 ea: R237-54 O-Ring, R253-122 Seal, R254-78 Bearing, R254-79 Cup, R3296-15 Locknut, R471219 Grease Zerk, RET15726 Sleeve, RET15756 Seal:

| | | | | |
|----|----------------|--|---------------------------------|---|
| 21 | R101399 | | Overhaul Kit - UHMW 2 Pc Roller | 1 |
|----|----------------|--|---------------------------------|---|

Detail Description: Fits all R&R 2-1/2" - 3-1/2" Dia. Black UHMW Plastic Rollers that do not use ball bearings.. Includes 2 ea.: R1503230 Star Washers, R1503470 Seals, R150333 Thrust Washers, R3296-15 Locknuts, R1503471 Bronze Thrust Washers:

Other Parts Available

| | | | | |
|----|-----------------|---------|----------------------------|---|
| 30 | R3296-15 | N101345 | Locknut - 3/4-16 Nylon Jam | 2 |
|----|-----------------|---------|----------------------------|---|

| | | | | |
|----|----------------|---|---------------|---|
| 31 | R471219 | 471219, 471231, JD7759, JD7798 | Zerk - Grease | 2 |
|----|----------------|---|---------------|---|

| | | | | |
|----|-----------------|----------------------|------------------------|---|
| 32 | RET15726 | ET15726, RET15726 | Sleeve - Wear Hardened | 2 |
|----|-----------------|----------------------|------------------------|---|

| | | | | |
|----|-----------------|---------|------------|---|
| 33 | RET15755 | ET15755 | Seal - Oil | 4 |
|----|-----------------|---------|------------|---|

| | | | | |
|----|-----------------|------------------------------|------|---|
| 34 | RET15756 | ET15756, MT1739, MT739 | Seal | 2 |
|----|-----------------|------------------------------|------|---|

| | | | | |
|----|----------------|------------------|----------------|---|
| 35 | R237-54 | U46731, U6731 | O-Ring - Small | 2 |
|----|----------------|------------------|----------------|---|

| | | | | |
|----|-----------------|---------|----------------|---|
| 36 | RET16934 | ET16934 | Shaft - Roller | 2 |
|----|-----------------|---------|----------------|---|

| | | | | |
|----|----------------|--------|-------------------|---|
| 36 | RMT1986 | MT1986 | Shaft - 30 Roller | 2 |
|----|----------------|--------|-------------------|---|

| | | | | |
|----|-----------------|---------|-------------------|---|
| 36 | RET17514 | ET17514 | Shaft - 26 Roller | 2 |
|----|-----------------|---------|-------------------|---|

All original equipment manufacturers names and part numbers are used for identification purposes only, and we are in no way implying that our products are original equipment parts. Prices subject to change without notice.



Replaces John Deere 365 Hydraulic Gang Mower Parts

ESP Cutting Unit
Rollers



| Item No | R&R Part No. | OEM Part No. | Description | Qty Req | Order Quantity |
|---|--------------|--------------|--------------------------------|---------|----------------|
| 37 | R500511 | | Roller End - Threaded 3 | 2 | |
| 38 | R150673 | | Washer - 3 Repairable Roller | 15 | |
| 39 | R150676 | | Spacer - 2-3/4 Dia x 1-1/4 L | 16 | |
| 40 | R150691 | | Screw - Set Nyloc 3/8-16 x 3/8 | 4 | |
| 41 | R170714 | E14814 | Fitting - Pressure Relief | 2 | |
| 42 | R254-78 | JD8188 | Tapered Bearing Cone | 2 | |
| 43 | R254-79 | JD8226 | Cup - Bearing | 2 | |
| <i>Detail Description: Use R254-79M installation mandrel to properly install race.:</i> | | | | | |
| 44 | R1503470 | | Seal - Inner Wiper | 2 | |
| 45 | R1503230 | | Washer - Thrust Outer Keyed | 2 | |
| 46 | R1503471 | | Washer - Thrust SAE660 Bronze | 2 | |
| 47 | R150333 | | Washer - Flat Keyed Outer SS | 2 | |
| 49 | RET16931 | ET16931 | Pin - 30 Scraper | 2 | |
| 49 | RET17758 | ET17758 | Pin - 26 Scrapers | 2 | |
| 50 | R34M7010 | 34M7010 | Pin - Spring | 2 | |
| 51 | RET17630 | ET17630 | Spring - Torsion RH | 1 | |
| 52 | RET17629 | ET17629 | Spring - Torsion LH | 1 | |
| 53 | R500570 | | Bar - 30 Scraper | 2 | |
| 53 | R500565 | MT2368 | Bar - Scraper 26 | 2 | |
| 54 | RMT2593 | MT2593 | Blade - 30 Scraper | 1 | |
| 54 | RMT2594 | MT2594 | Blade - 26 Scraper | 1 | |
| 55 | R500566 | | Scraper - Assy Fits R500508 | 5 | |

All original equipment manufacturers names and part numbers are used for identification purposes only, and we are in no way implying that our products are original equipment parts. Prices subject to change without notice.



Replaces John Deere 365 Hydraulic Gang Mower Parts

ESP Cutting Unit
Rollers



| Item No | R&R Part No. | OEM Part No. | Description | Qty Req | Order Quantity |
|--|-----------------|--------------|--|---------|----------------|
| <i>Detail Description: Incl R500567 Scraper:</i> | | | | | |
| 55 | R500568 | | Scraper - Assy 30 Fits OEM | 5 | |
| <i>Detail Description: Incl: R500569 Scraper:</i> | | | | | |
| 56 | RBM18607 | BM18607 | Scraper Kit - OEM Grooved Roller Set / 5 | 1 | |
| <i>Detail Description: Includes 30 ea: R03M7251 Bolt, R14M7303 Bolt; 5 ea: R34M7010 Pin, R500569 Scraper, R500570 Bar, RET16931 Pin, RET17629 LH Spring, RET17630 RH Spring:</i> | | | | | |
| 57 | R500567 | | Scraper - 30 in Fits R500508 | 1 | |
| 58 | R500569 | | Scraper - 30 in Fits OEM | 1 | |
| 59 | R14M7303 | 14M7303 | Nut - 6mm x 1.0 Flanged | 0 | |
| 60 | R03M7251 | 03M7251 | Bolt - Gr. Roller Scraper | 0 | |
| 61 | R21M7246 | 21M7246 | Screw | 0 | |
| 62 | RMT5158 | MT5158 | Scraper - Fits J.D. RH End | 1 | |
| 63 | RMT2341 | MT2341 | Section - Grooved Scraper 4 Tooth | 3 | |
| 64 | RMT2340 | MT2340 | Scraper - Fits J.D. Center | 1 | |
| 65 | RMT5159 | MT5159 | Scraper - Fits J.D. LH End | 1 | |
| 66 | RMT2342 | MT2342 | Section - Grooved Scraper 3 Tooth | 1 | |
| 67 | RAMT1379 | AMT1379 | Scraper - Assy Solid Roller 30 | 1 | |
| 67 | RMT2368 | MT2368 | Scraper - Assy 26 Solid Roller | 1 | |
| <i>Detail Description: Includes: RET17630, RET17629, RET17758, R34M7010 RMT2594 R14M7303 & R21M7246:</i> | | | | | |
| 68 | R500534 | | Bearing - with Cup | 2 | |
| <i>Detail Description: Kit includes: 1 ea R254-78- Bearing Cone & R254-79 Bearing Cone:</i> | | | | | |

All original equipment manufacturers names and part numbers are used for identification purposes only, and we are in no way implying that our products are original equipment parts. Prices subject to change without notice.



Replaces John Deere 365 Hydraulic Gang Mower Parts

*ESP Cutting Unit
Rollers*



| Item No | R&R Part No. | OEM Part No. | Description | Qty Req | Order Quantity |
|---------|-----------------|--------------|--------------------------|---------|----------------|
| 70 | R253-122 | 253-122 | Seal | 2 | |
| 71 | R150676A | | Spacer - 1/8 | 4 | |
| 72 | RMT2407 | MT2407 | Bracket - Roller Scraper | 2 | |
| 73 | R03M7221 | 03M7221 | Bolt - Carriage M6 x 16 | 6 | |

All original equipment manufacturers names and part numbers are used for identification purposes only, and we are in no way implying that our products are original equipment parts. Prices subject to change without notice.