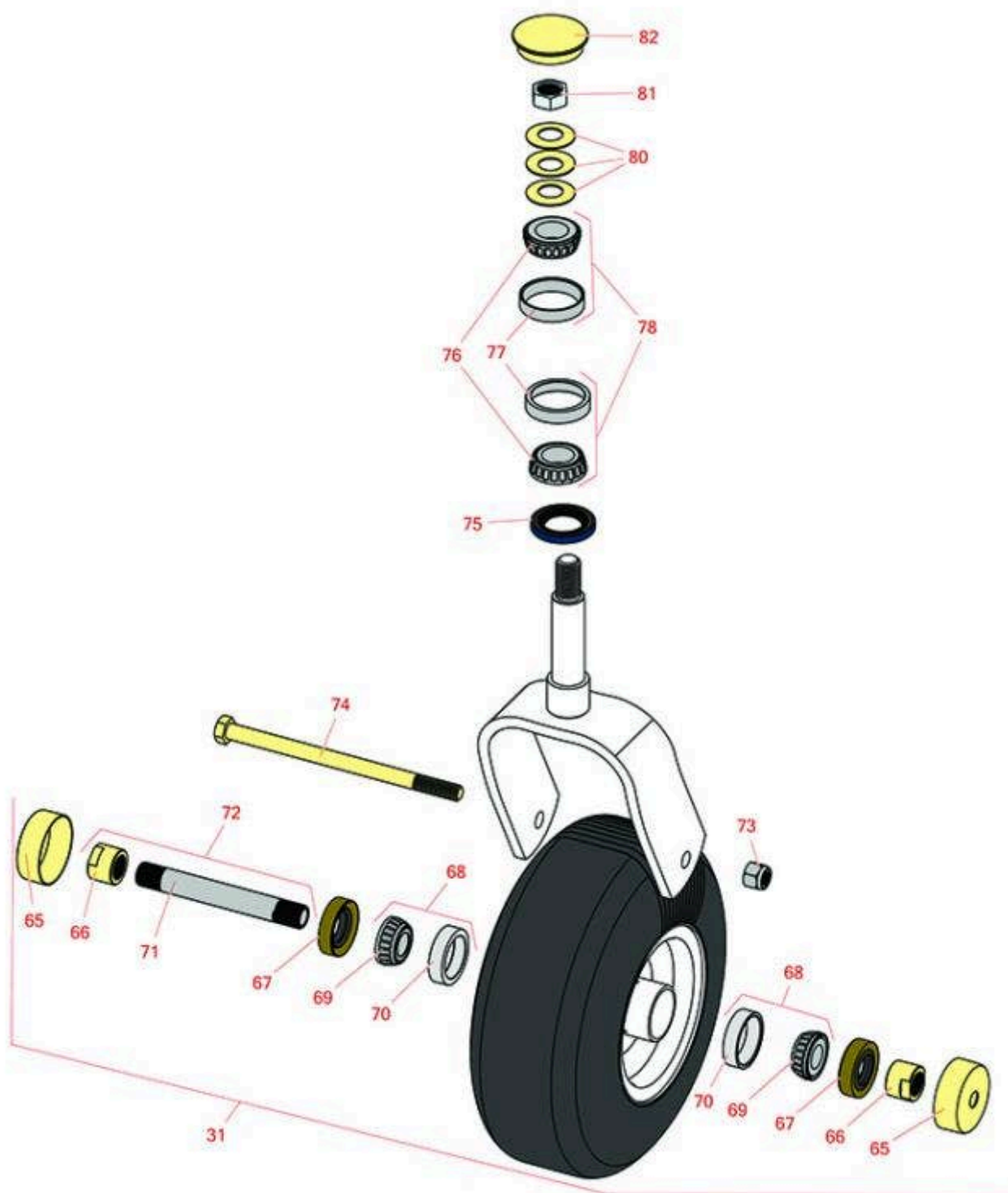




## Replaces Exmark Vertex S-Series Parts

48in Zero-Turn Mower - Model VXS730GKA48400  
Caster Wheel



All original equipment manufacturers names and part numbers are used for identification purposes only, and we are in no way implying that our products are original equipment parts. Prices subject to change without notice.



## Replaces Exmark Vertex S-Series Parts

48in Zero-Turn Mower - Model VXS730GKA48400  
Caster Wheel



Item No	R&R Part No.	OEM Part No.	Description	Qty Req	Order Quantity
<b>Tires</b>					
31	<b>R109-9126</b>	109-9126	Tire & Wheel - 13x5.00-6 - White	2	
<b>Other Parts Available</b>					
65	<b>R103-2768</b>	103-2768	Guard - Seal	4	
66	<b>R103-3051</b>	103-3051	Spacer - Nut - Hardened	4	
67	<b>R103-0063</b>	103-0063	Seal - Grease	4	
68	<b>R500534</b>	1-633585, R & R ONLY	Bearing - with Cup	4	
<i>Detail Description: Kit includes: 1 ea R254-78- Bearing Cone &amp; R254-79 Bearing Cone:</i>					
69	<b>R254-78</b>	1-633585	Tapered Bearing Cone	4	
70	<b>R254-79</b>	1-633584, R & R ONLY	Cup - Bearing	4	
<i>Detail Description: Use R254-79M installation mandrel to properly install race.:</i>					
71	<b>R103-3155</b>	103-3155	Axle - Caster	2	
72	<b>R126-5360</b>	126-5360	Axle- Caster w/Spacer Nut	2	
73	<b>RF5003</b>	3296-23	Locknut - ESNA 1/2-13	2	
74	<b>R325-42</b>	325-42	Bolt - 1/2-13 x 8 Hex Head Gr 5	2	
75	<b>R116-5647</b>	116-5647, R & R ONLY	Seal - Grease	2	
76	<b>R254-94</b>	1-543509	Tapered Bearing Cone	4	
77	<b>R254-72</b>	1-543508	Cup - Bearing	4	
78	<b>R500596</b>	R & R ONLY	Tapered Bearing Set - Cup and Cone	4	
80	<b>R1-633508</b>	1-633508	Washer - Spring Disc	6	

All original equipment manufacturers names and part numbers are used for identification purposes only, and we are in no way implying that our products are original equipment parts. Prices subject to change without notice.



## Replaces Exmark Vertex S-Series Parts

48in Zero-Turn Mower - Model VXS730GKA48400  
Caster Wheel



Item No	R&R Part No.	OEM Part No.	Description	Qty Req	Order Quantity
81	<b>R3296-51</b>	3296-51	Nut - Nylon Lock 3/4-10 Gr 8	2	
82	<b>R103-4882</b>	103-4882	Grease Cap - Castor	2	

All original equipment manufacturers names and part numbers are used for identification purposes only, and we are in no way implying that our products are original equipment parts. Prices subject to change without notice.