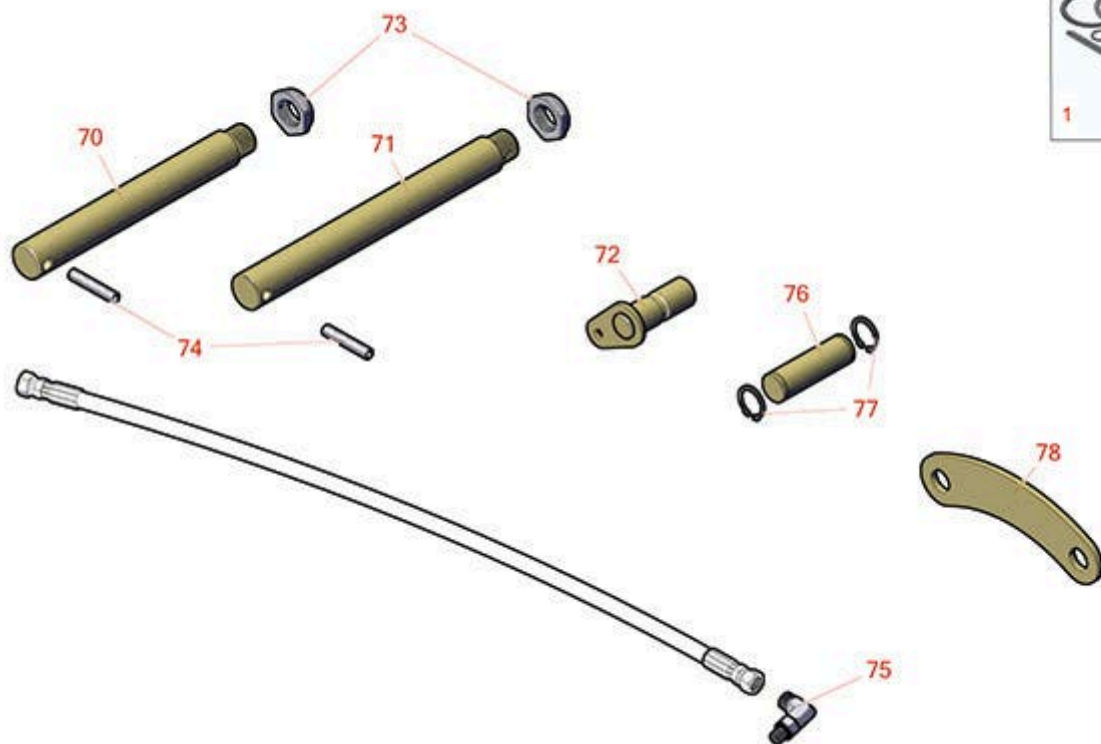




# Replaces Toro Reelmaster 6700D Parts

Traction Unit - Models 03808 & 03813

Lift Arm



All original equipment manufacturers names and part numbers are used for identification purposes only, and we are in no way implying that our products are original equipment parts. Prices subject to change without notice.



# Replaces Toro Reelmaster 6700D Parts

Traction Unit - Models 03808 & 03813

Lift Arm



Item No	R&R Part No.	OEM Part No.	Description	Qty Req	Order Quantity
---------	--------------	--------------	-------------	---------	----------------

## Overhaul Kits

1	<b>R107-2564</b>	107-2564	Seal Kit - Fits 107-1981 Hyd Cyl	1	
---	------------------	----------	----------------------------------	---	--

*Tech Note: Used on Hydraulic Cylinder No. 108-4440:*

## Other Parts Available

70	<b>R98-8826</b>	98-8826	Pin-Pivot	2	
----	-----------------	---------	-----------	---	--

*Tech Note: Used on Rear No. 6 and No. 7 Lift Arm Assembly:*

71	<b>R95-7158</b>	95-7158	Pin - Pivot	2	
----	-----------------	---------	-------------	---	--

*Tech Note: Used on Front and Rear Lift Arms Assembly:*

72	<b>R105-9889</b>	105-9889, 125-1906	Cylinder Pin Assy	2	
----	------------------	-----------------------	-------------------	---	--

73	<b>R3296-49</b>	3296-49	Locknut - 1 in 14	4	
----	-----------------	---------	-------------------	---	--

74	<b>R32121-110</b>	32121-110	Roll Pin - Slotted	4	
----	-------------------	-----------	--------------------	---	--

75	<b>R340-132</b>	340-132	Hydraulic Fitting - 90 Deg	5	
----	-----------------	---------	----------------------------	---	--

76	<b>R92-7548</b>	92-7548	Pin - Cylinder	2	
----	-----------------	---------	----------------	---	--

77	<b>R458039</b>	32151-36	Ring - Retaining	12	
----	----------------	----------	------------------	----	--

78	<b>R98-8821</b>	98-8821	Link - Rear	1	
----	-----------------	---------	-------------	---	--

79	<b>R94-1444</b>	94-1444	Union-Bulkhead	4	
----	-----------------	---------	----------------	---	--

80	<b>R340-78</b>	340-78	Nut - Lock Bulkhead	4	
----	----------------	--------	---------------------	---	--

81	<b>R237-22</b>	107-8844, 237-22, 237-78	O-Ring	7	
----	----------------	--------------------------------	--------	---	--

82	<b>R340-103</b>	340-103, 340-137	Hydraulic Fitting - 45 Deg	1	
----	-----------------	---------------------	----------------------------	---	--

All original equipment manufacturers names and part numbers are used for identification purposes only, and we are in no way implying that our products are original equipment parts. Prices subject to change without notice.



## Replaces Toro Reelmaster 6700D Parts

*Traction Unit - Models 03808 & 03813*

*Lift Arm*



Item No	R&R Part No.	OEM Part No.	Description	Qty Req	Order Quantity
83	<b>R237-21</b>	237-21, 327-21	O-Ring	7	
84	<b>R10-8110</b>	10-8110	Washer - Pivot Pin	8	
85	<b>R93-2704-03</b>	93-2704-03	Link - Left	4	
86	<b>R340-92</b>	340-92	Hydraulic Fitting - Striaight	2	

All original equipment manufacturers names and part numbers are used for identification purposes only, and we are in no way implying that our products are original equipment parts. Prices subject to change without notice.