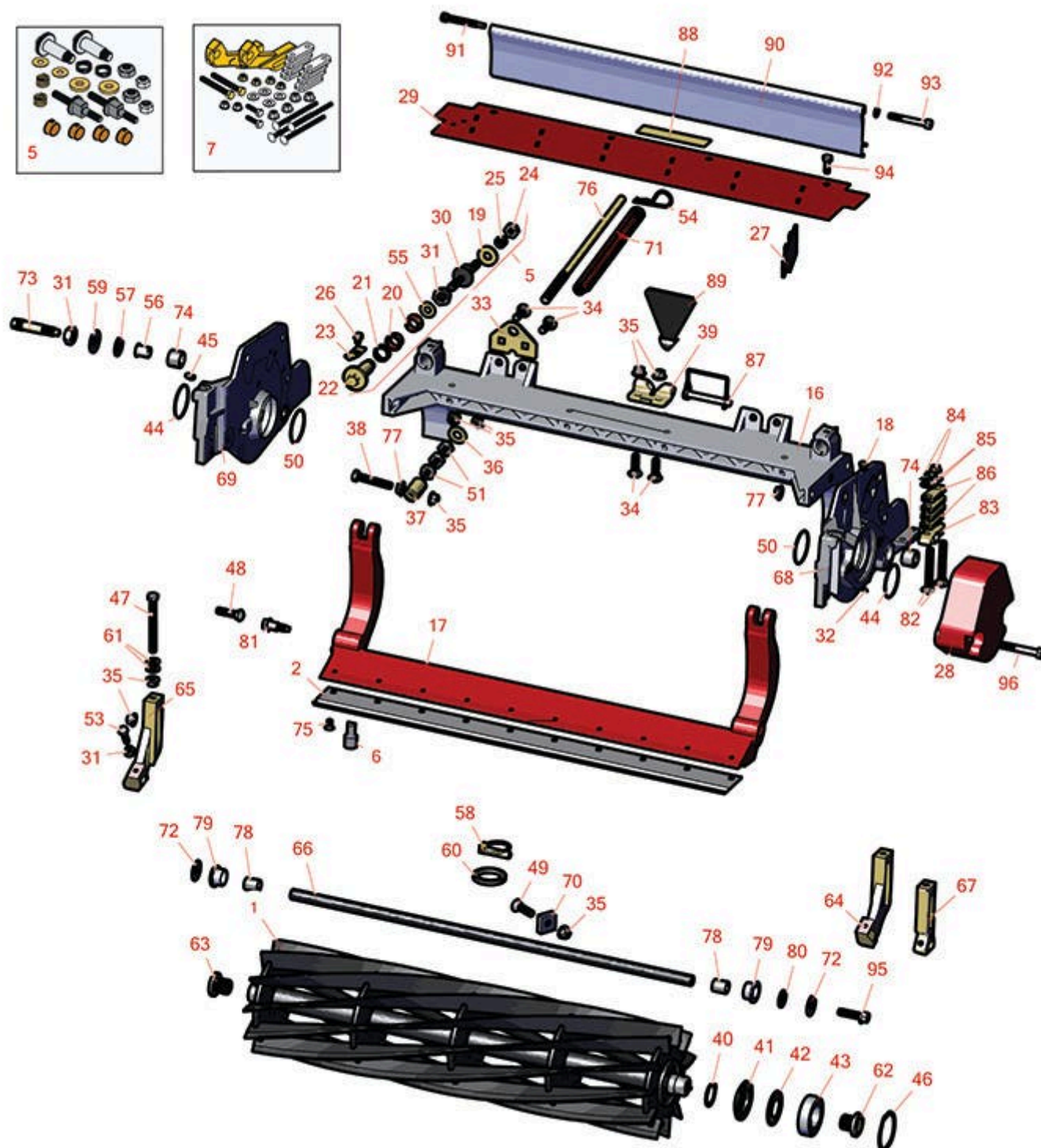




# Replaces Toro Reelmaster 7000-D Parts

27in DPA Cutting Unit - Models 03721 & 03722

Reel & Bedknife



All original equipment manufacturers names and part numbers are used for identification purposes only, and we are in no way implying that our products are original equipment parts. Prices subject to change without notice.



## Replaces Toro Reelmaster 7000-D Parts

27in DPA Cutting Unit - Models 03721 & 03722  
Reel & Bedknife



Item No	R&R Part No.	OEM Part No.	Description	Qty Req	Order Quantity
---------	--------------	--------------	-------------	---------	----------------

### R&R Reels Lifetime Guaranteed

1	<b>R137-8469</b>	137-8469	Reel - 5 Blade Razor Series Radial Low Drag (RR) w/Bearings and Seals 27x7	0	
---	------------------	----------	--	---	--

*Detail Description: R&R Razor Reels are manufactured from a special high alloy steel and then hardened to RC48-51 to match the temper of our Razor bedknives and original equipment premium series bedknives. All R&R Reels are cylindrically ground on bearing surfaces, relief ground and precision computer balanced for extended bearing and reel life. R&R Products Reels are guaranteed against defects in material and workmanship for the life of the reel under normal use. You can expect up to double the life from Razor reels over standard reels.:*

1	<b>R133-0184</b>	133-0184	Reel - 8 Blade Razor Series Radial 27x7	0	
---	------------------	----------	--	---	--

*Detail Description: R&R Razor Reels are manufactured from a special high alloy steel and then hardened to RC48-51 to match the temper of our Razor bedknives and original equipment premium series bedknives. All R&R Reels are cylindrically ground on bearing surfaces, relief ground and precision computer balanced for extended bearing and reel life. R&R Products Reels are guaranteed against defects in material and workmanship for the life of the reel under normal use. You can expect up to double the life from Razor reels over standard reels.:*

1	<b>R137-8470</b>	137-8470	Reel - 8 Blade Razor Series Radial (RR) w/Bearings and Seals 27x7	0	
---	------------------	----------	---	---	--

*Detail Description: R&R Reel blades are expertly crafted from premium high carbon-boron alloy steel, heat-treated to perfectly complement both R&R and OEM bedknives. Each reel undergoes precision cylindrical grinding on bearing surfaces, followed by relief grinding for optimal performance. Advanced computer balancing ensures extended reel and bearing life. Backed by our lifetime guarantee against defects in materials and craftsmanship under normal use, R&R Reels deliver unmatched durability and cutting precision you can trust.:*

1	<b>R133-8278</b>	133-8278	Reel - 11 Blade Razor Series Radial 27x7	0	
---	------------------	----------	---	---	--

*Detail Description: R&R Razor Reels are manufactured from a special high alloy steel and then hardened to RC48-51 to match the temper of our Razor bedknives and original equipment premium series bedknives. All R&R Reels are cylindrically ground on bearing surfaces, relief ground and precision computer balanced for extended bearing and reel life. R&R Products Reels are guaranteed against defects in material and workmanship for the life of the reel under normal use. You can expect up to double the life from Razor reels over standard reels.:*

All original equipment manufacturers names and part numbers are used for identification purposes only, and we are in no way implying that our products are original equipment parts. Prices subject to change without notice.



## Replaces Toro Reelmaster 7000-D Parts

27in DPA Cutting Unit - Models 03721 & 03722  
Reel & Bedknife



Item No	R&R Part No.	OEM Part No.	Description	Qty Req	Order Quantity
1	<b>R137-8471</b>	137-8471	Reel - 11 Blade Razor Series Radial (RR) w/Bearings and Seals 27x7	0	
<i>Detail Description: R&amp;R Reel blades are expertly crafted from premium high carbon-boron alloy steel, heat-treated to perfectly complement both R&amp;R and OEM bedknives. Each reel undergoes precision cylindrical grinding on bearing surfaces, followed by relief grinding for optimal performance. Advanced computer balancing ensures extended reel and bearing life. Backed by our lifetime guarantee against defects in materials and craftsmanship under normal use, R&amp;R Reels deliver unmatched durability and cutting precision you can trust.:</i>					
1	<b>R133-0193</b>	133-0193	Reel - 5 Blade Razor Series Radial 32x7	0	
<i>Detail Description: R&amp;R Razor Reels are manufactured from a special high alloy steel and then hardened to RC48-51 to match the temper of our Razor bedknives and original equipment premium series bedknives. All R&amp;R Reels are cylindrically ground on bearing surfaces, relief ground and precision computer balanced for extended bearing and reel life. R&amp;R Products Reels are guaranteed against defects in material and workmanship for the life of the reel under normal use. You can expect up to double the life from Razor reels over standard reels.:</i>					
1	<b>R137-8482</b>	137-8482	Reel - 5 Blade Razor Series Radial (RR) w/Bearings and Seals 32x7	0	
<i>Detail Description: R&amp;R Reel blades are expertly crafted from premium high carbon-boron alloy steel, heat-treated to perfectly complement both R&amp;R and OEM bedknives. Each reel undergoes precision cylindrical grinding on bearing surfaces, followed by relief grinding for optimal performance. Advanced computer balancing ensures extended reel and bearing life. Backed by our lifetime guarantee against defects in materials and craftsmanship under normal use, R&amp;R Reels deliver unmatched durability and cutting precision you can trust.:</i>					
1	<b>R133-0195</b>	133-0195	Reel - 8 Blade Razor Series Radial Low Drag w/Bearings and Seals 32x7	0	
<i>Detail Description: R&amp;R Razor Reels are manufactured from a special high alloy steel and then hardened to RC48-51 to match the temper of our Razor bedknives and original equipment premium series bedknives. All R&amp;R Reels are cylindrically ground on bearing surfaces, relief ground and precision computer balanced for extended bearing and reel life. R&amp;R Products Reels are guaranteed against defects in material and workmanship for the life of the reel under normal use. You can expect up to double the life from Razor reels over standard reels.:</i>					
1	<b>R137-8483</b>	137-8483	Reel - 8 Blade Razor Series Radial (RR) w/Bearings and Seals 32x7	0	

All original equipment manufacturers names and part numbers are used for identification purposes only, and we are in no way implying that our products are original equipment parts. Prices subject to change without notice.



## Replaces Toro Reelmaster 7000-D Parts

27in DPA Cutting Unit - Models 03721 & 03722

Reel & Bedknife



Item No	R&R Part No.	OEM Part No.	Description	Qty Req	Order Quantity
---------	--------------	--------------	-------------	---------	----------------

***Detail Description:** R&R Reel blades are expertly crafted from premium high carbon-boron alloy steel, heat-treated to perfectly complement both R&R and OEM bedknives. Each reel undergoes precision cylindrical grinding on bearing surfaces, followed by relief grinding for optimal performance. Advanced computer balancing ensures extended reel and bearing life. Backed by our lifetime guarantee against defects in materials and craftsmanship under normal use, R&R Reels deliver unmatched durability and cutting precision you can trust.:*

### R&R Bedknife, Lifetime Guaranteed

2	<b>R114-9388</b>	114-9388	Bedknife - 27 in Unit - Standard	1
---	------------------	----------	----------------------------------	---

***Detail Description:** R&R Bedknives are manufactured from high carbon-boron alloy steel and then hardened to RC46-49 to match the temper of our reel blades and original equipment reels. Bedknives are surface ground on the top and front edge and straightened three times before being packaged with oil for rust prevention. All R&R Bedknives now have an increased front edge grind for added life. All R&R Bedknives are guaranteed against defects in material and workmanship under normal use for the life of the part.:*

2	<b>R114-9390</b>	114-9390	Bedknife - 27 in Unit - Heavy Duty	1
---	------------------	----------	------------------------------------	---

***Detail Description:** R&R Bedknives are manufactured from high carbon-boron alloy steel and then hardened to RC46-49 to match the temper of our reel blades and original equipment reels. Bedknives are surface ground on the top and front edge and straightened three times before being packaged with oil for rust prevention. All R&R Bedknives now have an increased front edge grind for added life. All R&R Bedknives are guaranteed against defects in material and workmanship under normal use for the life of the part.:*

### R&R Razor Tool Steel Bedknives, Lifetime Guaranteed

2	<b>R112-8910</b>	112-8910	Bedknife - Razor Tool Steel - 27 High Cut	1
---	------------------	----------	---	---

***Detail Description:** R&R Razor bedknives are manufactured from premium alloy tool steel steel and then hardened to RC48-51 to match the temper of our Razor reel blades and original equipment premium series reels. Bedknives are surface ground on the top and front edge and specially packaged for rust prevention. All R&R Bedknives now have an increased front edge grind for added life. All R&R Bedknives are guaranteed against defects in material and workmanship under normal use for the life of the part. You can expect up to double the life over standard bedknives.:*

2	<b>R112-8956</b>	112-8956	Bedknife - Razor Tool Steel - 32 x 3/8 Fairway	1
---	------------------	----------	--	---

All original equipment manufacturers names and part numbers are used for identification purposes only, and we are in no way implying that our products are original equipment parts. Prices subject to change without notice.





## Replaces Toro Reelmaster 7000-D Parts

27in DPA Cutting Unit - Models 03721 & 03722  
Reel & Bedknife



Item No	R&R Part No.	OEM Part No.	Description	Qty Req	Order Quantity
---------	--------------	--------------	-------------	---------	----------------

*Detail Description:* R&R Razor bedknives are manufactured from premium alloy tool steel steel and then hardened to RC48-51 to match the temper of our Razor reel blades and original equipment premium series reels. Bedknives are surface ground on the top and front edge and specially packaged for rust prevention. All R&R Bedknives now have an increased front edge grind for added life. All R&R Bedknives are guaranteed against defects in material and workmanship under normal use for the life of the part. You can expect up to double the life over standard bedknives.:

### Overhaul Kits

5	<b>R120-7230</b>	120-7230	Overhaul Kit - Fits DPA Units	0
---	------------------	----------	-------------------------------	---

*Detail Description:* Incl 2 ea.: R108-0015, R115-7039, R119-4155, R120-5116, R120-5118, R120-5120, R3296-33, R3296-48 & 4 ea: R106-5344:

6	<b>R51-0880</b>	51-0880	Bedknife Screw Driver Tool	1
---	-----------------	---------	----------------------------	---

*Detail Description:* Easily install and remove bed knife screws with the help of a ratchet with 3/8" drive. Tool manufactured with hardened alloy steel.:

7	<b>R110-9600</b>	110-9600	High HOC Kit	1
---	------------------	----------	--------------	---

*Detail Description:* Includes 1 ea.: R120-0404, R120-0405 & 2 ea: R112-7451, R322-16, R445722 & 4 ea.: R106-9758, R104-8300, R453011, R104-8301 & 8 ea: R106-3925:

### Other Parts Available

16	<b>R112-8935</b>	112-8935	Frame - Center - 27 in Unit	1
----	------------------	----------	-----------------------------	---

17	<b>R112-8908-01</b>	112-8908-01	Bedbar - 27 in - Fits OEM Units Only	1
----	---------------------	-------------	--------------------------------------	---

18	<b>R170714</b>	302-34, 302-39, 62-3520	Fitting - Pressure Relief	2
----	----------------	-------------------------------	---------------------------	---

19	<b>R119-4155</b>	119-4155	Washer - Hardened	2
----	------------------	----------	-------------------	---

20	<b>R106-5344</b>	106-5344	Bushing - Flanged and Keyed	4
----	------------------	----------	-----------------------------	---

21	<b>R120-5116</b>	120-5116	Washer - Wave	2
----	------------------	----------	---------------	---

22	<b>R120-5118</b>	120-5118	Shaft - Adjuster	2
----	------------------	----------	------------------	---

All original equipment manufacturers names and part numbers are used for identification purposes only, and we are in no way implying that our products are original equipment parts. Prices subject to change without notice.



## Replaces Toro Reelmaster 7000-D Parts

27in DPA Cutting Unit - Models 03721 & 03722  
Reel & Bedknife



Item No	R&R Part No.	OEM Part No.	Description	Qty Req	Order Quantity
<i>Detail Description: 2012 &amp; Newer:</i>					
23	<b>R99-2097</b>	99-2097	Detent - Bed Bar Adjuster	2	
24	<b>R3296-48</b>	119-4039, 32146-7, 3296-34, 3296-48	Locknut - 7/16-14 ESNA	2	
25	<b>R120-5120</b>	120-5120	Spring - Compression	2	
26	<b>R114-9396</b>	114-9396, 119-4067	Bolt - Hex HD 5/16-18 x 3/8	2	
27	<b>R110-1706</b>	110-1706	Deflector	6	
<i>Tech Note: 7 for 32 in Units:</i>					
28	<b>R108-4269-01</b>	108-4269-01	Weight	1	
29	<b>R112-8942</b>	112-8942	Front Grass Shield Assy - 27 in Units	1	
30	<b>R115-7039</b>	115-7039	Screw - Adjuster - Bedbar	2	
<i>Tech Note: 2012 &amp; Newer:</i>					
30	<b>R137-6130</b>	137-6130	Screw - Adjuster - Hardened - Bedbar	2	
31	<b>R3296-33</b>	3296-33	Locknut - 5/8-18 ESNA Jam	2	
<i>Tech Note: 2012 &amp; Newer:</i>					
32	<b>R3245-35</b>	3245-35	Screw - Set 1/4-28 x 1/4	2	
33	<b>R110-4069</b>	110-4069	Bracket	1	
34	<b>R3231-25</b>	01-173-0610, 30-9970, 3231-25, 3231-3, 900064P	Bolt - Carriage 3/8-16 x 1-1/4	4	

All original equipment manufacturers names and part numbers are used for identification purposes only, and we are in no way implying that our products are original equipment parts. Prices subject to change without notice.



## Replaces Toro Reelmaster 7000-D Parts

27in DPA Cutting Unit - Models 03721 & 03722

Reel & Bedknife



Item No	R&R Part No.	OEM Part No.	Description	Qty Req	Order Quantity
35	<b>R104-8301</b>	104-8301, 104-9301, 109-6658, 133-7570	Locknut - 3/8-16 Nylon Flanged	7	
36	<b>R87-7270-01</b>	87-7270	Washer - Flat 1/2	1	
37	<b>R99-8662</b>	99-8662	Tube - Spring	1	
38	<b>R104-3396</b>	104-3396	Bolt - Hex HD 3/8-16 x 2-1/4	1	
39	<b>R110-4058</b>	110-4058	Bracket - Chain	1	
40	<b>R92-2601</b>	92-2601	Snap Ring	2	
41	<b>R127-4284</b>	127-4284	Washer - Special	2	
42	<b>R115-3299</b>	115-3299	Seal- Flocked	2	
43	<b>R115-3296</b>	115-3296	Bearing	2	
44	<b>R112-6967</b>	112-6967	O-Ring	2	
45	<b>R302-5</b>	21-6010, 302-11, 302-37, 302-47, 302-5, 302-57, 302-58, 302-6, 31-0300, 32-9660, 60-0800, 62-3880, 92-4181	Fitting - Grease	2	
46	<b>R105-5700</b>	105-5700, 115-5258	Wave Washer - Bearing	1	
47	<b>R107-4026</b>	107-4026	Bolt - Hex Tap 3/8-16 x 3-3/4	2	
48	<b>R3231-4</b>	01-157-0440, 01-173-0612, 3231-4	Bolt - Carriage 3/8-16 x 1-1/2	2	

All original equipment manufacturers names and part numbers are used for identification purposes only, and we are in no way implying that our products are original equipment parts. Prices subject to change without notice.



## Replaces Toro Reelmaster 7000-D Parts

27in DPA Cutting Unit - Models 03721 & 03722

Reel & Bedknife



Item No	R&R Part No.	OEM Part No.	Description	Qty Req	Order Quantity
49	<b>R3289-17</b>	3289-17	Screw - 3/8-16 x 1 1/2 Fl Soc HD	2	
50	<b>R117-8177</b>	117-8177	O-Ring	2	
51	<b>R443818</b>	01-191-0813, 3218-18, 3218-5	Nut - 1/2-13 Hex Jam Zinc	2	
53	<b>R322-16</b>	322-16, Apr-00	Bolt - Hex HD 5/16-18 x 1-1/8	2	
54	<b>R92-2762</b>	92-2762	Pin - Snap	1	
55	<b>R108-0015</b>	108-0015	Washer - Flat	2	
56	<b>R56-9520</b>	56-9520	Bushing - Nylon	2	
57	<b>R61-1950</b>	61-1950	Washer - Nylon - Bed Bar	2	
58	<b>R283-71</b>	283-71	Pin - Lynch Heavy Duty	1	
59	<b>R453017</b>	01-166-0050, 01-166-0240, 01-166-0800, 24-13-AD, 24-14-AD, 32-8110, 3256-26, 3256-6, 453017, 69-8980, 87-7270	Washer - Flat 1/2	2	
60	<b>R94-8946</b>	94-1427, 94-8946	Washer - Thrust	1	

All original equipment manufacturers names and part numbers are used for identification purposes only, and we are in no way implying that our products are original equipment parts. Prices subject to change without notice.





## Replaces Toro Reelmaster 7000-D Parts

27in DPA Cutting Unit - Models 03721 & 03722

Reel & Bedknife



Item No	R&R Part No.	OEM Part No.	Description	Qty Req	Order Quantity
61	R453011	01-166-0100, 01-166-0120, 01-166-0270, 01-166-0500, 01-166-0600, 01-166-0620, 132-4593, 2356-3, 237-12, 24-10-AD, 24-11-AD, 24-11-BD, 24-12-AD, 24-12-BD, 30-9310, 32-8190, 3256-24, 3256-3, 3256-36, 3256-4, 453011, 47-9950, 48-9220, 513458, 7-0052	Washer - Flat 3/8 SAE Y/Zinc	4	
62	R127-7111	127-7111	Insert-Threaded - 7 in Reel (LH)	1	
63	R127-7109	127-7109	Insert-Threaded - 7 in Reel (RH)	1	
64	R120-0404	120-0404	Bracket- High HOC - LH	1	
<i>Detail Description: Fits 2011 &amp; Newer:</i>					
65	R120-0405	120-0405	Bracket - High HOC - RH	1	
<i>Detail Description: Fits 2011 &amp; Newer:</i>					
66	R117-3752	117-3752	Tube- Support - 27 in Units	1	
67	R125-2796	125-2796	Bracket- Front HOC	2	
<i>Detail Description: Fits 2013 &amp; Newer:</i>					
68	R137-5963	137-5963, 137-5967	Side Plate Assy - 7 in LH Aluminum	1	

All original equipment manufacturers names and part numbers are used for identification purposes only, and we are in no way implying that our products are original equipment parts. Prices subject to change without notice.



## Replaces Toro Reelmaster 7000-D Parts

27in DPA Cutting Unit - Models 03721 & 03722  
Reel & Bedknife



Item No	R&R Part No.	OEM Part No.	Description	Qty Req	Order Quantity
69	<b>R137-5967</b>	137-5967	Side Plate Assy - 7 in RH Aluminum	1	
70	<b>R119-1603</b>	119-1603	Spacer - Pivot	2	
71	<b>R119-4275</b>	119-4275	Spring - Compression	1	
72	<b>R130-8094</b>	130-8094	Washer	2	
73	<b>R106-9623</b>	106-9623	Bolt - Bedbar	2	
74	<b>R106-9618</b>	106-9618	Bushing - Rubber	2	
75	<b>R119-4151</b>	119-4151	Screw - Bedknife 5/16-18 x 17/32	10	
76	<b>R115-2007</b>	107-7437, 115-2007	Rod - Spring	1	
77	<b>R32128-43</b>	30-8990, 32128-43, 3290-357	Nut - Flanged Whiz - 3/8-16	7	
77	<b>R3296-39</b>	32127-25, 32128-36, 3290-357, 3296-17, 3296-22, 3296-39, 915663P, 99-7443	Locknut - 3/8-16 Nylon	7	
78	<b>R108-4279</b>	108-4279	Spacer - Frame	2	
79	<b>R93-2877</b>	93-2877	Bushing - Flanged	2	
80	<b>R67-9410</b>	67-9410	Washer - Clevis Pin	2	
81	<b>R107-2979</b>	107-2979	Bolt - Shoulder	6	
82	<b>R3230-26</b>	3230-26	Screw - Carriage 5/16-18 x 3	4	
82	<b>R3230-30</b>	3230-30	Bolt - Carriage 5/16x4 1/2	4	
83	<b>R106-3924</b>	106-3924	Bracket - Rear Roller	2	

All original equipment manufacturers names and part numbers are used for identification purposes only, and we are in no way implying that our products are original equipment parts. Prices subject to change without notice.



## Replaces Toro Reelmaster 7000-D Parts

27in DPA Cutting Unit - Models 03721 & 03722  
Reel & Bedknife



Item No	R&R Part No.	OEM Part No.	Description	Qty Req	Order Quantity
84	<b>R104-8300</b>	104-8300, 104-8300 , 119-4041	Locknut - 5/16-18 Flanged Y/Zinc	4	
85	<b>R94-6936</b>	94-6936, 94-9236	Washer - Hardened - 5/16 SAE	4	
86	<b>R119-0626</b>	119-0626	Shim - Roller - 1/4 in - Slotted	12	
87	<b>R107-7400</b>	107-7400	Pin - Lynch	1	
88	<b>R93-6688</b>	93-6688	Decal - Warning	1	
88	<b>R137-9706</b>	137-9706	Decal- Warning	1	
89	<b>R110-4088-03</b>	110-4088-03, 119-8010-03	Kickstand	1	
90	<b>R125-1997</b>	125-1997	Grass Shield - Rear 27 in Unit	1	
91	<b>R107-7773</b>	107-7773	Bolt - Soc HD Cap 5/16-18 x 2-1/2	1	
92	<b>R3256-74</b>	3256-74	Washer - Flat	1	
93	<b>R322-14</b>	01-150-0830, 01-178-0524, 30-8900, 322-14	Bolt - Hex HD 5/16-18 x 3 GR5	1	
94	<b>R3234-7</b>	3234-7	Bolt - Hex Washer HD 5/16-18 x 5/8	4	
95	<b>R3234-19</b>	3234-19	Bolt - Hex Washer 3/8-16x1-3/4	2	
96	<b>R101526</b>	01-150-0970, 01-178-0620, 20-53-AGD, 321-11, 3224-8, 323-11, 323-12, 323-31, 323-4, 323-47	Bolt - Hex HD 3/8-16 x 2-1/2 GR5	10	

All original equipment manufacturers names and part numbers are used for identification purposes only, and we are in no way implying that our products are original equipment parts. Prices subject to change without notice.



## Replaces Toro Reelmaster 7000-D Parts

*27in DPA Cutting Unit - Models 03721 & 03722  
Reel & Bedknife*



All original equipment manufacturers names and part numbers are used for identification purposes only, and we are in no way implying that our products are original equipment parts. Prices subject to change without notice.