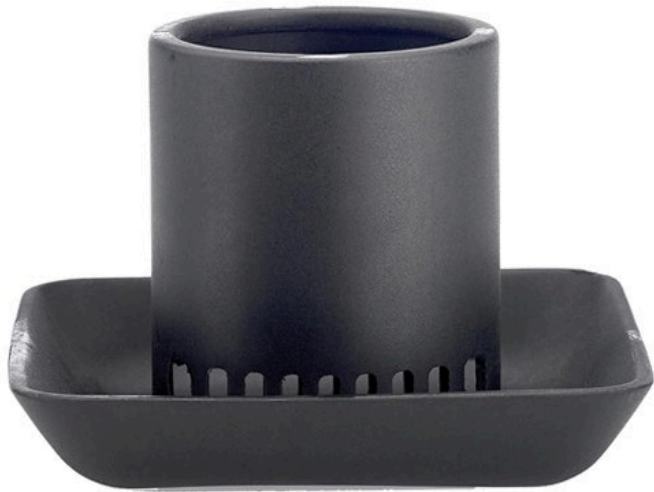




# Underhill Gulp Pro Mudguard - For Pumps Post 2020 RG7119



## Details

The MudGuard slides on the end of a Gulp Pro with 36" or 72" hose to prevent the pump from clogging in muddy conditions. This easy to attach and remove guard features a built-in filter to minimize mud and debris from burring into the pump.

- Fits Gulp Pro Water Removal Suction Pumps
- Built-in Filter Minimizes Clogging and Makes Pumping Easier
- A "Must Have" Accessory for Dirty Water Use
- Omni-Directional
- Easy On and Off for Cleaning Out Debris

## Specifications

Manufacturer	Underhill
Color	Black

**MecaGreen**

Rue des Praules 1A Gembloux, 85714  
+32 81 61 70 13

<https://mecagreen.rrproducts.com/>