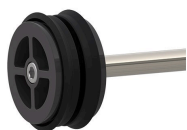




# Hand Pump Pro - 10"

RG7140



## Details

Quickly remove trapped water from large body sprinkler heads, valve boxes, clogged drains and low lying areas. Commercial grade PVC construction with a rigid anodized aluminum rod for durability. The suction piston is equipped with an O-ring seal and a threaded end cap making these pumps easy to disassemble, clean, then, reassemble. Includes 8" extension. Available in 10" pump chamber with 14 oz stroke or 20" pump chamber with 32 oz stroke.

- 10" Pump Chamber
- 14 oz. Stroke
- Thick PVC Construction w/ Anodized Aluminum Rod
- Disassembles for Easy Cleaning
- Interchangeable Attachments
- Includes 8" Extension

## Replaces

R&R Products

RG7112

## Specifications

Manufacturer

R&R Products

**MecaGreen**

Rue des Praules 1A Gembloux, 85714

+32 81 61 70 13

<https://mecagreen.rrproducts.com/>