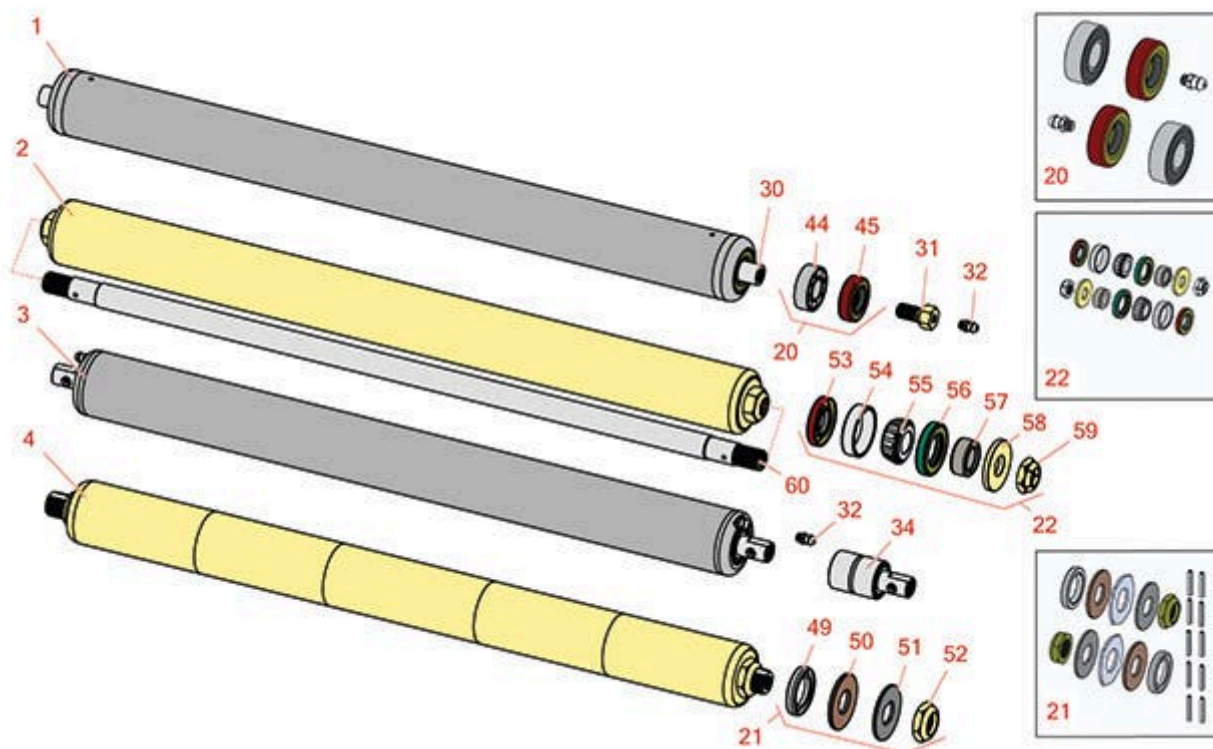




Replaces Jacobsen Eclipse 122F Parts

Floating Head Cutting Unit
Rear Rollers



All original equipment manufacturers names and part numbers are used for identification purposes only, and we are in no way implying that our products are original equipment parts. Prices subject to change without notice.



Replaces Jacobsen Eclipse 122F Parts

Floating Head Cutting Unit
Rear Rollers



Item No	R&R Part No.	OEM Part No.	Description	Qty Req	Order Quantity
---------	--------------	--------------	-------------	---------	----------------

R&R Rear Rollers

1	R158777	1004990, 158777, 162916	Roller - Smooth Tubular Steel	0	
---	---------	-------------------------------	-------------------------------	---	--

Detail Description: Constructed with a through shaft and greasable ball bearings.:

2	R1000770	1000770	Roller - Smooth Heavy Duty Tubular Steel	0	
---	----------	---------	--	---	--

Detail Description: Constructed with a through shaft, this heavy-duty roller uses tapered bearings for extended life. Body length measures 23-1/4".:

3	R101125		Roller - Smooth Tubular Steel	0	
---	---------	--	-------------------------------	---	--

Tech Note: Constructed with "water-pump" style bearings.:

Detail Description: Constructed with "water-pump" style bearings.:

4	R101335		Roller - Smooth UHMW Polyethylene	0	
---	---------	--	-----------------------------------	---	--

Detail Description: Machined from solid UHMW, this low maintenance roller uses a 1" solid stainless steel shaft and requires no grease. UHMW material prevents build-up of debris.:

Overhaul Kits

20	R100130	100130	Overhaul Kit - Roller	0	
----	---------	--------	-----------------------	---	--

Detail Description: Includes 2 ea.: R302-5 Grease Fittings, R303558 Bearings, & R305115 Seals:

21	R101395	100139, 101395	Overhaul Kit - UHMW Roller	0	
----	---------	-------------------	----------------------------	---	--

Detail Description: Fits all R&R 2" Dia. Black UHMW Polyethylene Rollers. Includes 10 ea.: R150322 Roll Pins; 2 ea.: R3296-15 Locknuts, R150347T Teflon Seals, R150333 Thrust Washers, & R150334A Bronze Thrust Washers:

22	R100139		Overhaul Kit - Roller	0	
----	---------	--	-----------------------	---	--

Detail Description: Includes 2 ea.: R254-67 Bearing Cups, R254-68 Bearing Cones, R337593 Seals, R253-152 Seals R3001762 Wear Sleeves, R3000698 Washers & R445718 Locknuts:

All original equipment manufacturers names and part numbers are used for identification purposes only, and we are in no way implying that our products are original equipment parts. Prices subject to change without notice.



Replaces Jacobsen Eclipse 122F Parts

Floating Head Cutting Unit
Rear Rollers



Item No	R&R Part No.	OEM Part No.	Description	Qty Req	Order Quantity
---------	--------------	--------------	-------------	---------	----------------

Other Parts Available

30	R154909	145909, 154909	Shaft - Rear Roller	1	
31	R345470	1002226, 345470	Bolt - Rear Roller 7/16-20	2	
<i>Detail Description: Incl. Grease Zerk:</i>					
31	R1002224	1002224	Bolt - Rear Roller 3/8-24	2	
<i>Detail Description: Incl Grease Zerk:</i>					
32	R302-5	302-5, 471214, 471223, 471226	Fitting - Grease	2	
34	R101482	101482	Bearing - Rear Machined Roller	2	
44	R303558	303558	Bearing - Roller	2	
45	R305115	305115	Seal - Roller	2	
49	R150347T		Seal - Nonstick Lip	2	
50	R150334A		Washer - Thrust SAE660 Bronze	2	
51	R150333		Washer - Flat Keyed Outer SS	2	
52	R3296-15	3296-15, 367029, 444742	Locknut - 3/4-16 Nylon Jam	2	
53	R253-152	3001656	Seal - Inner Roller	2	
54	R254-67	307108, 5000625, 500625	Cup - Bearing	2	
55	R254-68	307109, 5000625, 500625	Tapered Bearing Cone	2	

All original equipment manufacturers names and part numbers are used for identification purposes only, and we are in no way implying that our products are original equipment parts. Prices subject to change without notice.



Replaces Jacobsen Eclipse 122F Parts

*Floating Head Cutting Unit
Rear Rollers*



Item No	R&R Part No.	OEM Part No.	Description	Qty Req	Order Quantity
56	R337593	3000983, 337593	Seal	2	
57	R3001762	30001762, 3001762	Sleeve - Wear Hardened	2	
58	R3000698	3000698	Washer	2	
59	R445718	445718, 445801	Locknut - 5/8-18 All Metal	2	
60	R3001654	3001654	Shaft - Roller	1	

All original equipment manufacturers names and part numbers are used for identification purposes only, and we are in no way implying that our products are original equipment parts. Prices subject to change without notice.