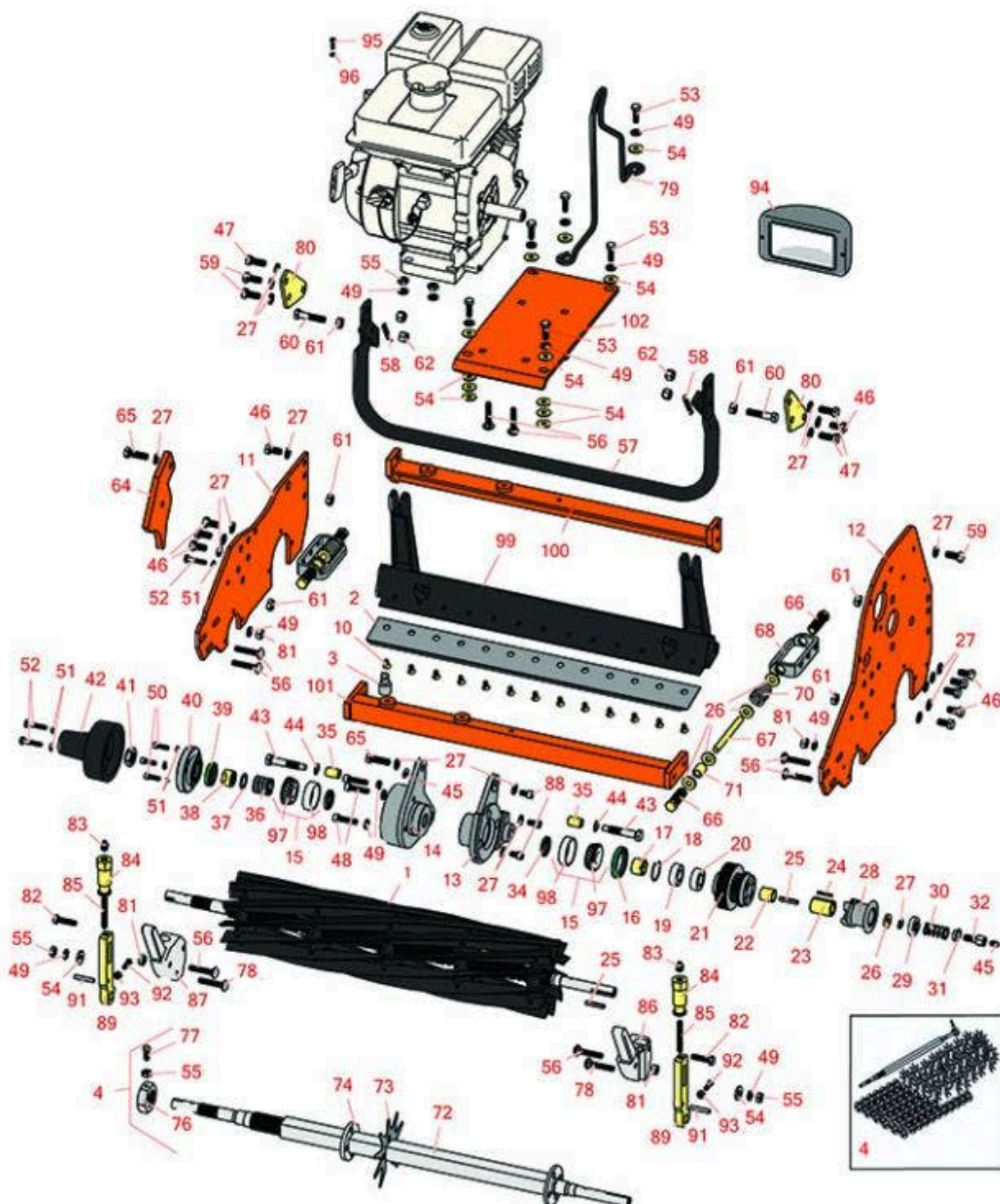




# Replaces Jacobsen Greens King 526

## Parts

Cutting Unit  
Reel & Bedknife



All original equipment manufacturers names and part numbers are used for identification purposes only, and we are in no way implying that our products are original equipment parts. Prices subject to change without notice.



# Replaces Jacobsen Greens King 526

## Parts

Cutting Unit  
Reel & Bedknife



Item No	R&R Part No.	OEM Part No.	Description	Qty Req	Order Quantity
---------	--------------	--------------	-------------	---------	----------------

### R&R Reels, Lifetime Guaranteed

1	<b>R5000095</b>	5000095	Reel - 11 Blade	1	
---	-----------------	---------	-----------------	---	--

*Tech Note: Fits 18":*

*Detail Description: R&R Reel blades are expertly crafted from premium high carbon-boron alloy steel, heat-treated to perfectly complement both R&R and OEM bedknives. Each reel undergoes precision cylindrical grinding on bearing surfaces, followed by relief grinding for optimal performance. Advanced computer balancing ensures extended reel and bearing life. Backed by our lifetime guarantee against defects in materials and craftsmanship under normal use, R&R Reels deliver unmatched durability and cutting precision you can trust.:*

1	<b>R101510</b>		Reel - 14 Blade	1	
---	----------------	--	-----------------	---	--

*Tech Note: Fits 18":*

*Detail Description: R&R Reel blades are manufactured from high carbon-boron alloy steel and then hardened to RC46-49 to match the temper of our bedknives and original equipment bedknives. All R&R Reels are cylindrically ground on bearing surfaces and then relief ground. Reels are then precision computer balanced for extended bearing and reel life. R&R Products Reels are guaranteed against defects in material and workmanship for the life of the reel under normal use.:*

1	<b>R5000148</b>	5000148, 503616	Reel - 11 Blade	1	
---	-----------------	--------------------	-----------------	---	--

*Tech Note: Fits 22":*

*Detail Description: R&R Reel blades are expertly crafted from premium high carbon-boron alloy steel, heat-treated to perfectly complement both R&R and OEM bedknives. Each reel undergoes precision cylindrical grinding on bearing surfaces, followed by relief grinding for optimal performance. Advanced computer balancing ensures extended reel and bearing life. Backed by our lifetime guarantee against defects in materials and craftsmanship under normal use, R&R Reels deliver unmatched durability and cutting precision you can trust.:*

1	<b>R101515</b>		Reel - 14 Blade	1	
---	----------------	--	-----------------	---	--

*Tech Note: Fits 22":*

All original equipment manufacturers names and part numbers are used for identification purposes only, and we are in no way implying that our products are original equipment parts. Prices subject to change without notice.



# Replaces Jacobsen Greens King 526

## Parts

Cutting Unit  
Reel & Bedknife



Item No	R&R Part No.	OEM Part No.	Description	Qty Req	Order Quantity
---------	--------------	--------------	-------------	---------	----------------

*Detail Description:* R&R Reel blades are manufactured from high carbon-boron alloy steel and then hardened to RC46-49 to match the temper of our bedknives and original equipment bedknives. All R&R Reels are cylindrically ground on bearing surfaces and then relief ground. Reels are then precision computer balanced for extended bearing and reel life. R&R Products Reels are guaranteed against defects in material and workmanship for the life of the reel under normal use.:

1	<b>R5000417</b>	5000417, 5003652	Reel - 7 Blade	1	
---	-----------------	---------------------	----------------	---	--

*Tech Note:* Fits 26":

*Detail Description:* R&R Reel blades are expertly crafted from premium high carbon-boron alloy steel, heat-treated to perfectly complement both R&R and OEM bedknives. Each reel undergoes precision cylindrical grinding on bearing surfaces, followed by relief grinding for optimal performance. Advanced computer balancing ensures extended reel and bearing life. Backed by our lifetime guarantee against defects in materials and craftsmanship under normal use, R&R Reels deliver unmatched durability and cutting precision you can trust.:

1	<b>R101500</b>	101500	Reel - 9 Blade	1	
---	----------------	--------	----------------	---	--

*Tech Note:* Fits 26":

*Detail Description:* R&R Reel blades are manufactured from high carbon-boron alloy steel and then hardened to RC46-49 to match the temper of our bedknives and original equipment bedknives. All R&R Reels are cylindrically ground on bearing surfaces and then relief ground. Reels are then precision computer balanced for extended bearing and reel life. R&R Products Reels are guaranteed against defects in material and workmanship for the life of the reel under normal use.:

1	<b>R5000416</b>	5000416	Reel - 11 Blade	1	
---	-----------------	---------	-----------------	---	--

*Tech Note:* Fits 26":

*Detail Description:* R&R Reel blades are expertly crafted from premium high carbon-boron alloy steel, heat-treated to perfectly complement both R&R and OEM bedknives. Each reel undergoes precision cylindrical grinding on bearing surfaces, followed by relief grinding for optimal performance. Advanced computer balancing ensures extended reel and bearing life. Backed by our lifetime guarantee against defects in materials and craftsmanship under normal use, R&R Reels deliver unmatched durability and cutting precision you can trust.:

### R&R Bedknives, Lifetime Guaranteed

2	<b>R5000098</b>	5000098	Bedknife - Low Cut 18 in	1	
---	-----------------	---------	--------------------------	---	--

All original equipment manufacturers names and part numbers are used for identification purposes only, and we are in no way implying that our products are original equipment parts. Prices subject to change without notice.



# Replaces Jacobsen Greens King 526

## Parts

Cutting Unit  
Reel & Bedknife



Item No	R&R Part No.	OEM Part No.	Description	Qty Req	Order Quantity
---------	--------------	--------------	-------------	---------	----------------

*Tech Note: Fits 18":*

*Detail Description: R&R Bedknives are manufactured from high carbon-boron alloy steel and then hardened to RC46-49 to match the temper of our reel blades and original equipment reels. Bedknives are surface ground on the top and front edge and straightened three times before being packaged with oil for rust prevention. All R&R Bedknives now have an increased front edge grind for added life. All R&R Bedknives are guaranteed against defects in material and workmanship under normal use for the life of the part.:*

2	<b>R5002888</b>	5001056, 5002888	Bedknife - Tournament 18" - .082-.109	1
---	-----------------	---------------------	--	---

*Tech Note: Fits 18":*

*Detail Description: R&R Bedknives are manufactured from high carbon-boron alloy steel and then hardened to RC46-49 to match the temper of our reel blades and original equipment reels. Bedknives are surface ground on the top and front edge and straightened three times before being packaged with oil for rust prevention. All R&R Bedknives now have an increased front edge grind for added life. All R&R Bedknives are guaranteed against defects in material and workmanship under normal use for the life of the part.:*

2	<b>R101430</b>		Bedknife - Micro Cut	1
---	----------------	--	----------------------	---

*Tech Note: Fits 18":*

*Detail Description: R&R Bedknives are manufactured from high carbon-boron alloy steel and then hardened to RC46-49 to match the temper of our reel blades and original equipment reels. Bedknives are surface ground on the top and front edge and straightened three times before being packaged with oil for rust prevention. All R&R Bedknives now have an increased front edge grind for added life. All R&R Bedknives are guaranteed against defects in material and workmanship under normal use for the life of the part.:*

2	<b>R4234900</b>	5000927	Bedknife - Tournament .063- .110	1
---	-----------------	---------	-------------------------------------	---

*Tech Note: Fits 22":*

*Detail Description: R&R Bedknives are manufactured from high carbon-boron alloy steel and then hardened to RC46-49 to match the temper of our reel blades and original equipment reels. Bedknives are surface ground on the top and front edge and straightened three times before being packaged with oil for rust prevention. All R&R Bedknives now have an increased front edge grind for added life. All R&R Bedknives are guaranteed against defects in material and workmanship under normal use for the life of the part.:*

2	<b>R503479</b>	503029, 503479	Bedknife - Tournament .094- .156 HOC	1
---	----------------	-------------------	---	---

All original equipment manufacturers names and part numbers are used for identification purposes only, and we are in no way implying that our products are original equipment parts. Prices subject to change without notice.





# Replaces Jacobsen Greens King 526

## Parts

Cutting Unit  
Reel & Bedknife



Item No	R&R Part No.	OEM Part No.	Description	Qty Req	Order Quantity
---------	--------------	--------------	-------------	---------	----------------

*Tech Note: Fits 22":*

*Detail Description: R&R Bedknives are manufactured from high carbon-boron alloy steel and then hardened to RC46-49 to match the temper of our reel blades and original equipment reels. Bedknives are surface ground on the top and front edge and straightened three times before being packaged with oil for rust prevention. All R&R Bedknives now have an increased front edge grind for added life. All R&R Bedknives are guaranteed against defects in material and workmanship under normal use for the life of the part.:*

2	<b>R503478</b>	101260, 503028, 503478, 549504	Bedknife - Thin .125-.219 HOC	1
---	----------------	---	-------------------------------	---

*Tech Note: Fits 22":*

*Detail Description: R&R Bedknives are manufactured from high carbon-boron alloy steel and then hardened to RC46-49 to match the temper of our reel blades and original equipment reels. Bedknives are surface ground on the top and front edge and straightened three times before being packaged with oil for rust prevention. All R&R Bedknives now have an increased front edge grind for added life. All R&R Bedknives are guaranteed against defects in material and workmanship under normal use for the life of the part.:*

2	<b>R503477</b>	101261, 503027, 503477, 549397	Bedknife - Thick .156-.438 HOC	1
---	----------------	---	--------------------------------	---

*Tech Note: Fits 22":*

*Detail Description: R&R Bedknives are manufactured from high carbon-boron alloy steel and then hardened to RC46-49 to match the temper of our reel blades and original equipment reels. Bedknives are surface ground on the top and front edge and straightened three times before being packaged with oil for rust prevention. All R&R Bedknives now have an increased front edge grind for added life. All R&R Bedknives are guaranteed against defects in material and workmanship under normal use for the life of the part.:*

2	<b>R5002887</b>	5002887	Bedknife - Micro Cut - .082-.109	1
---	-----------------	---------	----------------------------------	---

*Tech Note: Fits 22":*

All original equipment manufacturers names and part numbers are used for identification purposes only, and we are in no way implying that our products are original equipment parts. Prices subject to change without notice.



# Replaces Jacobsen Greens King 526

## Parts

Cutting Unit  
Reel & Bedknife



Item No	R&R Part No.	OEM Part No.	Description	Qty Req	Order Quantity
---------	--------------	--------------	-------------	---------	----------------

*Detail Description: R&R Bedknives are manufactured from high carbon-boron alloy steel and then hardened to RC46-49 to match the temper of our reel blades and original equipment reels. Bedknives are surface ground on the top and front edge and straightened three times before being packaged with oil for rust prevention. All R&R Bedknives now have an increased front edge grind for added life. All R&R Bedknives are guaranteed against defects in material and workmanship under normal use for the life of the part.:*

2	<b>R5000413</b>	5000413	Bedknife - 26 Thin 1/8	1
---	-----------------	---------	------------------------	---

*Tech Note: Fits 26":*

*Detail Description: R&R Bedknives are manufactured from high carbon-boron alloy steel and then hardened to RC46-49 to match the temper of our reel blades and original equipment reels. Bedknives are surface ground on the top and front edge and straightened three times before being packaged with oil for rust prevention. All R&R Bedknives now have an increased front edge grind for added life. All R&R Bedknives are guaranteed against defects in material and workmanship under normal use for the life of the part.:*

2	<b>R5000414</b>	5000414	Bedknife - 26 Thick 3/16	1
---	-----------------	---------	--------------------------	---

*Tech Note: Fits 26":*

*Detail Description: R&R Bedknives are manufactured from high carbon-boron alloy steel and then hardened to RC46-49 to match the temper of our reel blades and original equipment reels. Bedknives are surface ground on the top and front edge and straightened three times before being packaged with oil for rust prevention. All R&R Bedknives now have an increased front edge grind for added life. All R&R Bedknives are guaranteed against defects in material and workmanship under normal use for the life of the part.:*

2	<b>R5000141</b>	5000141	Bedknife - Heavy 26 in	1
---	-----------------	---------	------------------------	---

*Tech Note: Fits 26":*

*Detail Description: R&R Bedknives are manufactured from high carbon-boron alloy steel and then hardened to RC46-49 to match the temper of our reel blades and original equipment reels. Bedknives are surface ground on the top and front edge and straightened three times before being packaged with oil for rust prevention. All R&R Bedknives now have an increased front edge grind for added life. All R&R Bedknives are guaranteed against defects in material and workmanship under normal use for the life of the part.:*

### R&R Razor Tool Steel Bedknives, Lifetime Guaranteed

2	<b>R101520</b>		Bedknife - Razor Tool Steel - 22 Micro Cut	1
---	----------------	--	--	---

All original equipment manufacturers names and part numbers are used for identification purposes only, and we are in no way implying that our products are original equipment parts. Prices subject to change without notice.



# Replaces Jacobsen Greens King 526

## Parts

Cutting Unit  
Reel & Bedknife



Item No	R&R Part No.	OEM Part No.	Description	Qty Req	Order Quantity
---------	--------------	--------------	-------------	---------	----------------

*Tech Note: Fits 22":*

*Detail Description: R&R Razor bedknives are manufactured from premium alloy tool steel steel and then hardened to RC48-51 to match the temper of our Razor reel blades and original equipment premium series reels. Bedknives are surface ground on the top and front edge and specially packaged for rust prevention. All R&R Bedknives now have an increased front edge grind for added life. All R&R Bedknives are guaranteed against defects in material and workmanship under normal use for the life of the part. You can expect up to double the life over standard bedknives.:*

2	<b>R101521</b>		Bedknife - Razor Tool Steel - 22 Tournament Cut	1	
---	----------------	--	--	---	--

*Tech Note: Fits 22":*

*Detail Description: R&R Razor bedknives are manufactured from premium alloy tool steel steel and then hardened to RC48-51 to match the temper of our Razor reel blades and original equipment premium series reels. Bedknives are surface ground on the top and front edge and specially packaged for rust prevention. All R&R Bedknives now have an increased front edge grind for added life. All R&R Bedknives are guaranteed against defects in material and workmanship under normal use for the life of the part. You can expect up to double the life over standard bedknives.:*

### Service Tools

3	<b>R101272T</b>		Bedknife Screw Driver Tool	0	
---	-----------------	--	----------------------------	---	--

*Tech Note: Easily install and remove bed knife screws with the help of a ratchet. Tool manufactured with hardened alloy steel.:*

*Detail Description: Easily install and remove bed knife screws with the help of a ratchet. Tool manufactured with hardened alloy steel.:*

### Conversion Kits

4	<b>R101164</b>		Vertical Mower Conversion Kit - Fits 22 Only	1	
---	----------------	--	---	---	--

*Tech Note: Fits 22" Only:*

*Detail Description: Includes:1 ea. R101163 Shaft, R352437 Nut, 26 ea. R101160 Vertical Mower Blades & 76 R35221 Nylon Spacers:*

### Other Parts Available

All original equipment manufacturers names and part numbers are used for identification purposes only, and we are in no way implying that our products are original equipment parts. Prices subject to change without notice.



# Replaces Jacobsen Greens King 526

## Parts

Cutting Unit  
Reel & Bedknife



Item No	R&R Part No.	OEM Part No.	Description	Qty Req	Order Quantity
10	R101272	101272, 3009138, 402578, 800813	Screw - Bedknife 1/4-20 x 1/2	13	
11	R2811122	2811122	Frame - RH	1	
12	R2811121	2811121	Frame - LH	1	
13	R1000446	1000446	Bearing Housing - LH	1	
14	R1000447	1000447	Bearing Housing - RH	1	
<i>Detail Description: Includes R545940, R366650, R254-79 &amp; R302-5:</i>					
15	R500534	500534, R500534	Bearing - with Cup	2	
<i>Detail Description: Kit includes: 1 ea R254-78- Bearing Cone &amp; R254-79 Bearing Cone:</i>					
16	R366649	366649	Seal	1	
17	R366645	366645	Spacer - Reel	1	
18	R458461	458461	Snap Ring	1	
19	R366652	366652	Bearing	1	
20	R365229	365229	Bearing	1	
21	R2811185	2811185	Pulley	1	
22	R366646	366646	Spacer	1	
23	R340462	340462	Drive Coupling	1	
24	R345556	345556	Key - Sq 1/8 x 1	1	
25	R320774	320774	Key - Sq 3/16 x 1-1/4	2	
26	R366653	366653	Spacer	1	

All original equipment manufacturers names and part numbers are used for identification purposes only, and we are in no way implying that our products are original equipment parts. Prices subject to change without notice.





# Replaces Jacobsen Greens King 526

## Parts

*Cutting Unit  
Reel & Bedknife*



Item No	R&R Part No.	OEM Part No.	Description	Qty Req	Order Quantity
27	R3254-6	3254-6, 446140, 446142	Washer - Lock 3/8	1	
28	R5002727	5002727	Clutch - Reel	1	
29	R3004368	3004368	Retainer - Spring	1	
30	R3006061	3006061	Spring	1	
31	R3004369	3004369	Retainer - Spring	1	
32	R366651	366651	Bolt - Special	1	
34	R366650	366650	Seal	1	
35	R545940	2500759, 545940	Bushing	2	
36	R363047	348846, 363047	Spring - Reel	1	
37	R304745	304745	Washer - Reel	1	
38	R364900	364900	Nut - Reel Tension	1	
39	R364170	364170, 366648	Seal	1	
40	R164041	164041	Seal Carrier - Reel - Incl Seal	1	
41	R3296-15	3296-15, 367029, 444742	Locknut - 3/4-16 Nylon Jam	1	
42	R2000064	2000064	Cover - Reel	1	
43	R347169	347169, 365501	Stud - Backing RH 2-5/16	2	
44	R454017	454017	Shim - Bed Bar Bolt	2	

All original equipment manufacturers names and part numbers are used for identification purposes only, and we are in no way implying that our products are original equipment parts. Prices subject to change without notice.



# Replaces Jacobsen Greens King 526

## Parts

Cutting Unit  
Reel & Bedknife



Item No	R&R Part No.	OEM Part No.	Description	Qty Req	Order Quantity
45	R302-5	302-5, 471214, 471223, 471226	Fitting - Grease	1	
46	R400258	400258	Bolt - Hex HD 3/8-16 x 3/4	9	
47	RF3205	400188, 400262	Bolt - Hex HD 3/8-16 x 1	2	
48	R434036	434036	Screw - Soc HD 5/16-18 x 1-1/4	3	
49	R446136	446134, 446136	Washer - Lock 5/16 Zinc	3	
50	R434028	434028	Bolt - Soc HD Cap 1/4-20 x 3/4	3	
51	R3253-3	3253-3, 446128, 446130	Washer - Lock 1/4	5	
52	R400112	400112, 400114	Bolt - Hex HD 1/4-20 x 1-1/4	2	
53	R322-5	400188	Bolt - Hex HD 5/16-18 x 1	6	
54	R348849	348849	Shim Washer - 5/16 x 7/8 x .010	0	
54	R364263	364263	Shim Washer - 5/16 x 7/8 x 1/16	0	
54	R364441	364441, 366641	Washer - Flat 5/16x7/8	4	
55	R443106	443106	Nut - 5/16-18 Y/Zinc Plated	4	
56	R441677	441677	Bolt - Carriage 5/16-18 x 1-1/2	6	
57	R1000018	1000018	Kickstand - 18 in	1	
57	R132674	132674	Kickstand - 22 in	1	
57	R1000019	1000019	Kickstand - 26 in	1	
58	R364164	364164	Spring	2	

All original equipment manufacturers names and part numbers are used for identification purposes only, and we are in no way implying that our products are original equipment parts. Prices subject to change without notice.



# Replaces Jacobsen Greens King 526

## Parts

Cutting Unit  
Reel & Bedknife



Item No	R&R Part No.	OEM Part No.	Description	Qty Req	Order Quantity
59	R400260	400260	Bolt - Hex HD 3/8-16 x 7/8	3	
60	R400268	400268	Bolt - Hex HD 3/8-16 x 1-3/4	2	
61	R3218-3	443810	Nut - 3/8-16 Jam	4	
62	R444850	444850	Nut - 3/8-16 Jam Center Lock	3	
64	R3001644	3001644	Weight	1	
65	R400264	400264	Bolt - Hex HD 3/8-16 x 1-1/4	1	
66	R366726	366726	Bolt - Special - Bed Knife Adj.	4	
67	R366727	352437, 366727	Rod - Bedknife Block	2	
68	R3001600	3001600, 412017	Block - Bedknife Adjusting	2	
70	R366709	366709	Spring	2	
71	R367512	367512	Spacer - Bedknife Adj	2	
72	R101163		Shaft - V-Cut Fits Jac 422/522	1	
73	R101160		Verti-Cut Blade - Fits 22 Gm	26	
73	R101160C		Verti-Cut Blade - Fits 22 Gm Carbide Tipped	26	
74	R352221	352221	Spacer - Nylon V-Cut Shaft	76	
76	R352437	352437	Nut - V-Cut Shaft	1	
77	R412017	412017	Screw - Sq. HD Set	1	
78	R441674	441674	Screw - 5/16-18 x 1-3/4 Carriage	2	
79	R3006118	3006118	Lift Hook	1	
80	R366796	366796	Bracket - Kickstand	2	

All original equipment manufacturers names and part numbers are used for identification purposes only, and we are in no way implying that our products are original equipment parts. Prices subject to change without notice.



# Replaces Jacobsen Greens King 526

## Parts

Cutting Unit  
Reel & Bedknife



Item No	R&R Part No.	OEM Part No.	Description	Qty Req	Order Quantity
81	R444718	444718	Nut - 5/16-18 Center Lock YZ	4	
82	R400190	352737, 400190	Bolt - Hex HD 5/16-18 x 1-1/4 GR5	2	
83	R471219	366852, 471219	Zerk - Grease	2	
84	R365009	3005692, 365009, 365170, 441674	Knob - Adjusting Roller	2	
85	R343616	343616, 443102	Stud	2	
86	R241827	241827, 446136	Bracket - LH Grass Catcher	1	
87	R241828	241828, 453023	Bracket - RH Grass Catcher	1	
88	R434051	461339	Bolt - Soc HD Cap 5/16-18 x 1/2	3	
89	R2000072	2000072, 471219	Bracket - Roller	2	
91	R461339	343616, 461339	Pin - Grooved Roller Bkt	2	
92	R352737	352737	Screw - Set 1/4 x 7/8 Sq Head	2	
93	R443102	443102	Nut - 1/4-20 Yellow Zinc	7	
94	R101560		Light - Single Bulb	1	
95	R300104	300104	Screw - Button HD Cap 10-32 x 5/8	1	
96	R444312	444312	Nut - 10-32	1	

All original equipment manufacturers names and part numbers are used for identification purposes only, and we are in no way implying that our products are original equipment parts. Prices subject to change without notice.



# Replaces Jacobsen Greens King 526

## Parts

Cutting Unit  
Reel & Bedknife



Item No	R&R Part No.	OEM Part No.	Description	Qty Req	Order Quantity
97	<b>R254-78</b>	254-78, 385174, 4121174, 4135152	Tapered Bearing Cone	2	
98	<b>R254-79</b>	254-79, 4121175	Cup - Bearing	2	
<i>Detail Description: Use R254-79M installation mandrel to properly install race.:</i>					
99	<b>R5000102</b>	5000102	Bed Bar - 18 in	1	
99	<b>R5000457</b>	5000457	Bed Bar - 22 in	1	
99	<b>R5000412</b>	5000412	Bed Bar - 26 in	1	
100	<b>R1000020</b>	1000020	Rear Crossbar - 18 in	1	
100	<b>R1000838</b>	1000838	Rear Crossbar - 22 in	1	
100	<b>R1000021</b>	1000021	Rear Crossbar - 26 in	1	
101	<b>R1000022</b>	1000022	Front Crossbar - 18 in	1	
101	<b>R1000839</b>	1000839	Front Crossbar - 22 in	1	
101	<b>R1000023</b>	1000023	Front Crossbar - 26 in	1	
102	<b>R5002848</b>	5002848	Engine Base	1	

All original equipment manufacturers names and part numbers are used for identification purposes only, and we are in no way implying that our products are original equipment parts. Prices subject to change without notice.