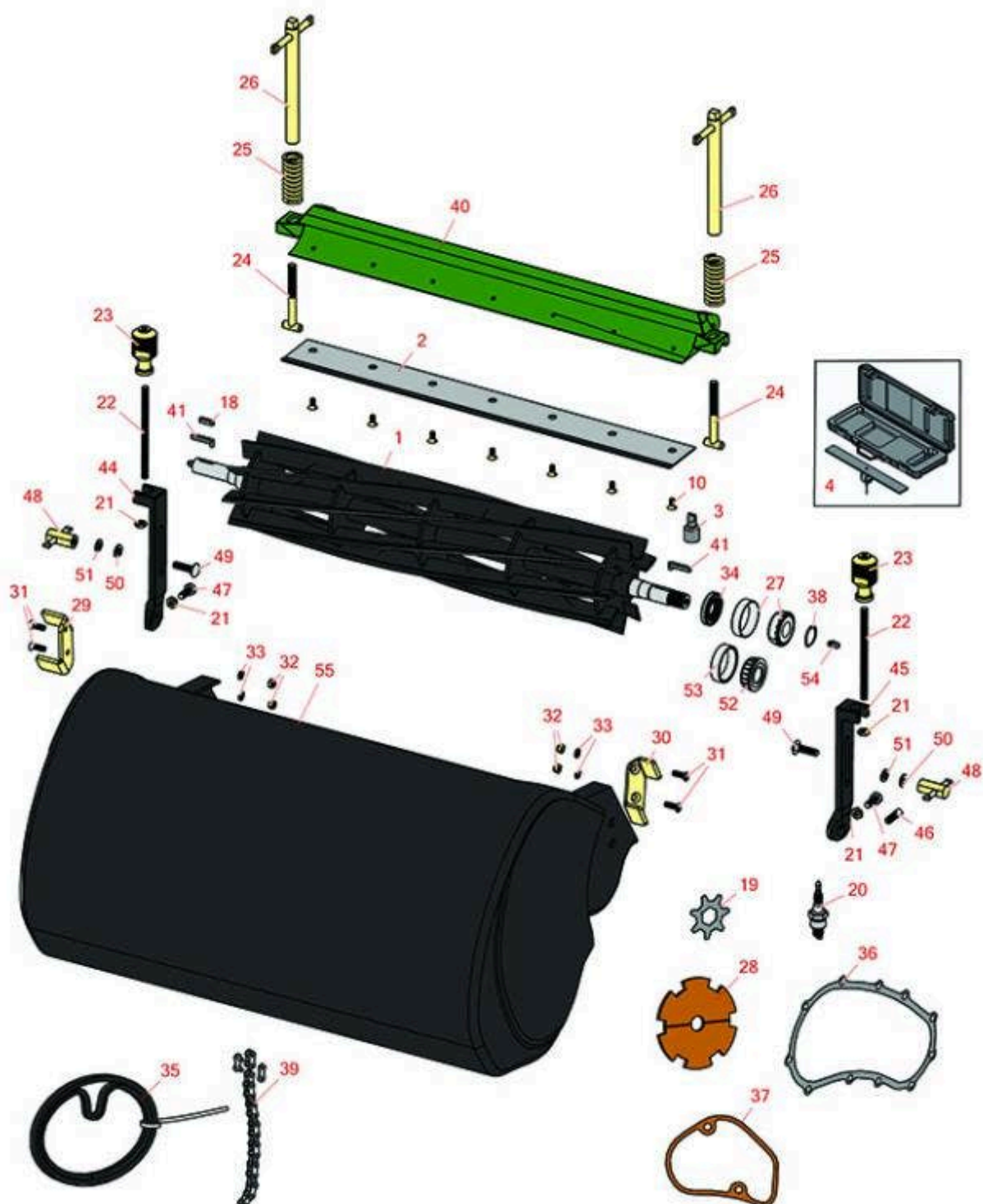




Cutting Unit

Reel & Bedknife



All original equipment manufacturers names and part numbers are used for identification purposes only, and we are in no way implying that our products are original equipment parts. Prices subject to change without notice.



Replaces John Deere 22R Greens Mower

Parts

Cutting Unit

Reel & Bedknife



Item No	R&R Part No.	OEM Part No.	Description	Qty Req	Order Quantity
---------	--------------	--------------	-------------	---------	----------------

R&R Reels, Lifetime Guaranteed

1	RET11055	AMT2867, AMT536, ET11055	Reel - 9 Blade 22in	1	
---	----------	--------------------------------	---------------------	---	--

Detail Description: R&R Reel blades are expertly crafted from premium high carbon-boron alloy steel, heat-treated to perfectly complement both R&R and OEM bedknives. Each reel undergoes precision cylindrical grinding on bearing surfaces, followed by relief grinding for optimal performance. Advanced computer balancing ensures extended reel and bearing life. Backed by our lifetime guarantee against defects in materials and craftsmanship under normal use, R&R Reels deliver unmatched durability and cutting precision you can trust.:

1	RET13457	ET13457	Reel - 9 Blade	1	
---	----------	---------	----------------	---	--

Detail Description: R&R Reel blades are expertly crafted from premium high carbon-boron alloy steel, heat-treated to perfectly complement both R&R and OEM bedknives. Each reel undergoes precision cylindrical grinding on bearing surfaces, followed by relief grinding for optimal performance. Advanced computer balancing ensures extended reel and bearing life. Backed by our lifetime guarantee against defects in materials and craftsmanship under normal use, R&R Reels deliver unmatched durability and cutting precision you can trust.:

1	R101325		Reel - 11 Blade	1	
---	---------	--	-----------------	---	--

Detail Description: R&R Reel blades are expertly crafted from premium high carbon-boron alloy steel, heat-treated to perfectly complement both R&R and OEM bedknives. Each reel undergoes precision cylindrical grinding on bearing surfaces, followed by relief grinding for optimal performance. Advanced computer balancing ensures extended reel and bearing life. Backed by our lifetime guarantee against defects in materials and craftsmanship under normal use, R&R Reels deliver unmatched durability and cutting precision you can trust.:

1	R101326		Reel - 11 Blade	1	
---	---------	--	-----------------	---	--

Detail Description: R&R Reel blades are expertly crafted from premium high carbon-boron alloy steel, heat-treated to perfectly complement both R&R and OEM bedknives. Each reel undergoes precision cylindrical grinding on bearing surfaces, followed by relief grinding for optimal performance. Advanced computer balancing ensures extended reel and bearing life. Backed by our lifetime guarantee against defects in materials and craftsmanship under normal use, R&R Reels deliver unmatched durability and cutting precision you can trust.:

R&R Bedknives, Lifetime Guaranteed

2	RET17534	ET17534	Bedknife - 22in Tournament-.098 Min HOC	1	
---	----------	---------	---	---	--

All original equipment manufacturers names and part numbers are used for identification purposes only, and we are in no way implying that our products are original equipment parts. Prices subject to change without notice.



Replaces John Deere 22R Greens Mower

Parts

Cutting Unit

Reel & Bedknife



Item No	R&R Part No.	OEM Part No.	Description	Qty Req	Order Quantity
---------	--------------	--------------	-------------	---------	----------------

Detail Description: R&R Bedknives are manufactured from high carbon-boron alloy steel and then hardened to RC46-49 to match the temper of our reel blades and original equipment reels. Bedknives are surface ground on the top and front edge and straightened three times before being packaged with oil for rust prevention. All R&R Bedknives now have an increased front edge grind for added life. All R&R Bedknives are guaranteed against defects in material and workmanship under normal use for the life of the part.:

2	R101277	ET10177	Bedknife - Super Thin 3/32	1
---	----------------	---------	----------------------------	---

Detail Description: R&R Bedknives are manufactured from high carbon-boron alloy steel and then hardened to RC46-49 to match the temper of our reel blades and original equipment reels. Bedknives are surface ground on the top and front edge and straightened three times before being packaged with oil for rust prevention. All R&R Bedknives now have an increased front edge grind for added life. All R&R Bedknives are guaranteed against defects in material and workmanship under normal use for the life of the part.:

2	R101276		Bedknife - Thin 1/8	1
---	----------------	--	---------------------	---

Detail Description: R&R Bedknives are manufactured from high carbon-boron alloy steel and then hardened to RC46-49 to match the temper of our reel blades and original equipment reels. Bedknives are surface ground on the top and front edge and straightened three times before being packaged with oil for rust prevention. All R&R Bedknives now have an increased front edge grind for added life. All R&R Bedknives are guaranteed against defects in material and workmanship under normal use for the life of the part.:

2	R101275	ET11066	Bedknife - Thick 3/16	1
---	----------------	---------	-----------------------	---

Detail Description: R&R Bedknives are manufactured from high carbon-boron alloy steel and then hardened to RC46-49 to match the temper of our reel blades and original equipment reels. Bedknives are surface ground on the top and front edge and straightened three times before being packaged with oil for rust prevention. All R&R Bedknives now have an increased front edge grind for added life. All R&R Bedknives are guaranteed against defects in material and workmanship under normal use for the life of the part.:

Service Tools

3	R101278T		Bedknife Screw Driver Tool	0
---	-----------------	--	----------------------------	---

Tech Note: Easily install and remove bed knife screws with the help of a ratchet. Tool manufactured with hardened alloy steel.:

Detail Description: Easily install and remove bed knife screws with the help of a ratchet. Tool manufactured with hardened alloy steel.:

4	R184		Masters Gauge - Digital - Inches/Metric	0
---	-------------	--	---	---

All original equipment manufacturers names and part numbers are used for identification purposes only, and we are in no way implying that our products are original equipment parts. Prices subject to change without notice.



Replaces John Deere 22R Greens Mower

Parts

Cutting Unit
Reel & Bedknife



Item No	R&R Part No.	OEM Part No.	Description	Qty Req	Order Quantity
---------	--------------	--------------	-------------	---------	----------------

Detail Description: Accurately measures desired height of cut. Easy to read digital indicator. Displays measurements in decimals and fractions, in English and Metric. 18" length.:

4	R175		Masters Gauge - Inches	0	
---	-------------	--	------------------------	---	--

Detail Description: Dial indicator accurately measures desired height of cut. Easy to use. Place the bar on front and rear rollers then push the measuring rod until it touches the bedknife edge. Hard anodized aluminum. Fits all greensmowers. Easy to read dial indicator. Displays measurements in .001" increments. 18" length.:

Other Parts Available

10	R101278	21M7194	Screw - Bedknife	7	
18	RET11057	ET11057	Key - Reel Shaft	1	
19	R363014	ET11030	Verti-Cut Blade - 2-3/8 Dia	39	
20	RET12355	ET12355	Plug - Spark NGK	1	
21	R14M7151	14M7151	Nut - Jam Roller Adj	2	
22	RET15585	ET11355, ET15585	Stud - Roller Adjusting	2	
23	RET11021	ET11021	Knob - Adjusting	0	
24	RET11372	ET11372	Bolt - Adjusting Bed Bar	2	
25	RET11070	ET11070	Spring - Bed Bar	2	
26	RET11068	ET11068	Handle - Adjusting RH	1	
26	RET11069	ET11069	Handle - Adjusting LH	1	
27	RET11062	ET11062	Bearing - with Cup	2	
28	RET16967	ET16967	Disc - Clutch Set/2	1	
29	RET11112	ET11112	Bracket - RH	1	
30	RET11113	ET11113	Bracket - LH	1	

All original equipment manufacturers names and part numbers are used for identification purposes only, and we are in no way implying that our products are original equipment parts. Prices subject to change without notice.



Replaces John Deere 22R Greens Mower

Parts

*Cutting Unit
Reel & Bedknife*



Item No	R&R Part No.	OEM Part No.	Description	Qty Req	Order Quantity
31	R21M7326	21M7326	Screw - M6 x 20mm	4	
32	RE68605	E68605	Locknut - 6mm	4	
33	R24M7139	24M7139	Washer - Flat 6mm	4	
34	RET11063	ET11063	Seal - Reel	2	
35	RAET11255	AET11255, ET11002	Belt - Matched Set of 2	1	
36	RET11151	ET11151	Gasket - Differential	1	
37	RET11043	ET11043	Gasket - V-Cut Housing	1	
38	R40M7080	40M7080, ET11059	Ring - Snap	1	
39	RAMT1419	AMT1419, ET11115	Chain	1	
39	RET11123	ET11123	Chain	1	
39	RET11148	ET11148	Chain - Differential	1	
39	RET13466	ET13466	Chain - Reel Drive Fits 22R	1	
39	RET13490	ET13490	Chain - Diff Fits 22R Only	1	
40	RET11067	ET11067	Bed Bar	1	
41	RET13458	ET13458	Key - Reel Shaft 22R Only	2	
44	RMT5244	MT5244	Bracket - Roller LH	1	
45	RMT5245	MT5245	Bracket - Roller RH	1	
46	RA50744	A50744	Screw - 8mm-1.25 x 25 Sq HD	2	
47	R19M7881	19M7881	Bolt - Hex HD M8-1.25 x 20	2	
48	RET11356	ET11356	Nut - Adjusting	2	

All original equipment manufacturers names and part numbers are used for identification purposes only, and we are in no way implying that our products are original equipment parts. Prices subject to change without notice.



Replaces John Deere 22R Greens Mower Parts

Cutting Unit
Reel & Bedknife



Item No	R&R Part No.	OEM Part No.	Description	Qty Req	Order Quantity
49	R03M7186	03M7186	Bolt - Carriage 8-1.25 x 30mm	2	
50	R24M7036	24M7036	Washer - Flat 8mm Zinc	2	
51	R12M7065	12M7065	Washer - Lock 8mm Zinc	2	
52	RAMT1108	AMT1108	Tapered Bearing Cone	1	
53	RMT2108	MT2108	Tapered Bearing Cup	1	
54	R302-5	JD7797, JD7842, JD7844	Fitting - Grease	2	
55	RET10210	ET10210	Grass Basket	1	

*Detail Description:
Please note: Due to excessive air freight charges, this item will be shipped ground freight.:*

All original equipment manufacturers names and part numbers are used for identification purposes only, and we are in no way implying that our products are original equipment parts. Prices subject to change without notice.