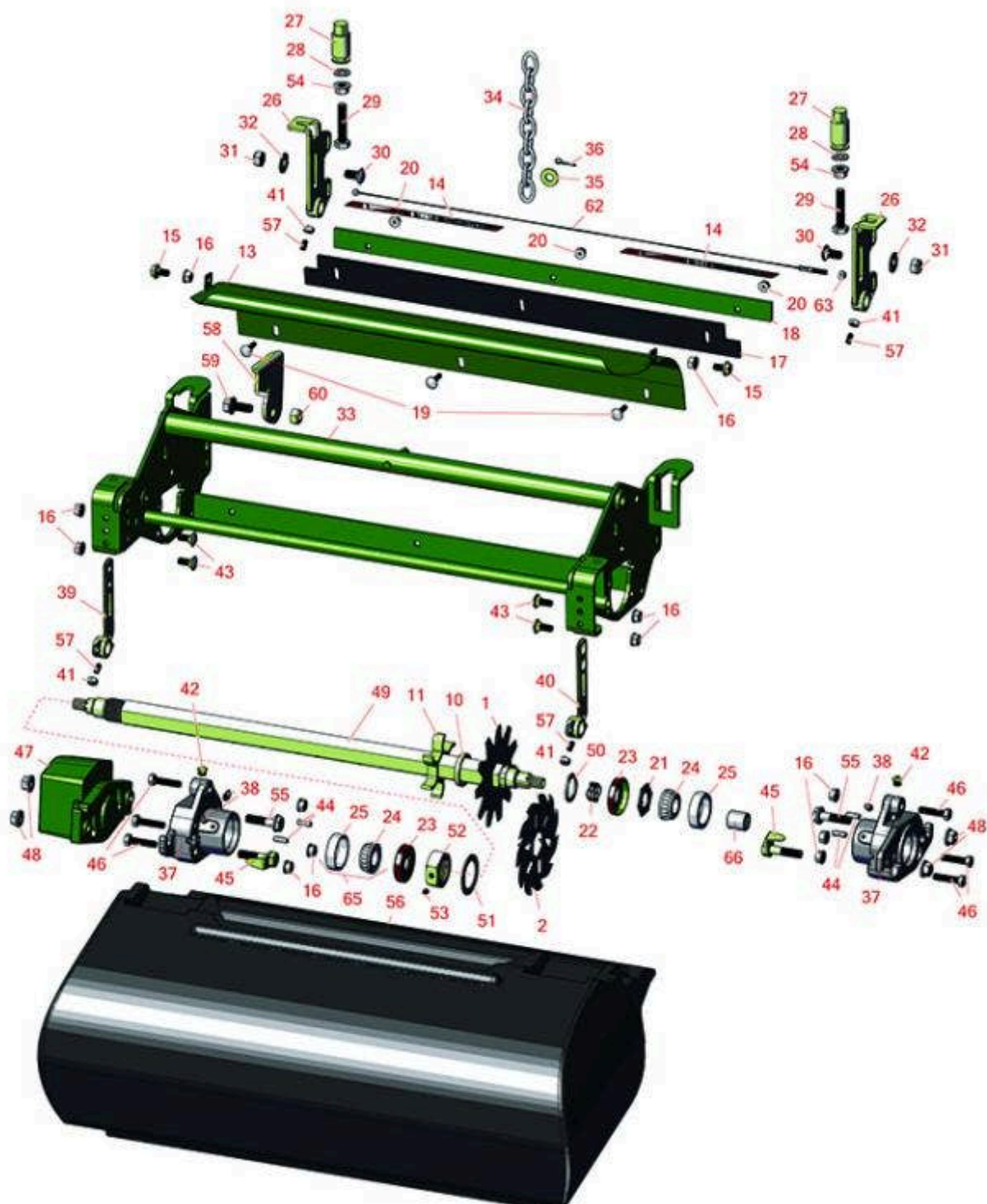




Replaces John Deere 2500E Hybrid Riding Greens Mower Parts

Verti-Cut Unit - Serial up to 030000

Verti-Cut Reel & Frame



All original equipment manufacturers names and part numbers are used for identification purposes only, and we are in no way implying that our products are original equipment parts. Prices subject to change without notice.



Replaces John Deere 2500E Hybrid Riding Greens Mower Parts

Verti-Cut Unit - Serial up to 030000

Verti-Cut Reel & Frame



Item No	R&R Part No.	OEM Part No.	Description	Qty Req	Order Quantity
---------	--------------	--------------	-------------	---------	----------------

Verti-Cut Blades

1	RAMT2703	AMT2703, ET17719	Blade - Vertical Mower	27	
---	----------	---------------------	------------------------	----	--

2	R150209C	TCU26776	Verti-Cut Blade - Carbide Tipped 2mm	27	
---	----------	----------	---	----	--

*Detail Description: STRONG BY DESIGN. Each blade is made with the highest quality hand-picked steel, and laser-cut to our exacting specifications for superior toughness and wear.

TUNGSTEN CARBIDE TIPS. Protect blades from abrasion for extended life and maintain a consistent cutting depth. Optional cutting widths to meet local turf conditions.:*

2	R150109C		Verti-Cut Blade - Carbide Tipped 1.2mm	27	
---	----------	--	---	----	--

*Detail Description: STRONG BY DESIGN. Each blade is made with the highest quality hand-picked steel, and laser-cut to our exacting specifications for superior toughness and wear.

TUNGSTEN CARBIDE TIPS. Protect blades from abrasion for extended life and maintain a consistent cutting depth. Optional cutting widths to meet local turf conditions.:*

Other Parts Available

10	RET17713	ET17713	Spacer - Vertical Mower Shaft	80	
----	----------	---------	-------------------------------	----	--

11	R150230		Spacer - 1/2 Ventilated V-Cut	37	
----	---------	--	-------------------------------	----	--

13	RAMT2608	AMT2608	Shield - Verticut	1	
----	----------	---------	-------------------	---	--

14	RMT6517	MT6517	Label - Warning	2	
----	---------	--------	-----------------	---	--

15	R19M7865	19M7865	Bolt - Hex Washer M8 x 16	2	
----	----------	---------	---------------------------	---	--

16	R14M7298	14M7298	Nut - 8mm x 1.25 Flanged	10	
----	----------	---------	--------------------------	----	--

17	RET17914	ET17914	Rubber Isolator - Verticut	1	
----	----------	---------	----------------------------	---	--

18	RAMT2704	AMT2704, MT169	Strap - Verticut Shield	1	
----	----------	-------------------	-------------------------	---	--

19	R03M7232	03M7232	Bolt - Carriage M6-1.0 x 25	3	
----	----------	---------	-----------------------------	---	--

20	R14M7397	14M7397, 14M7463	Locknut - 6mm x 1.0 ESNA Flanged	3	
----	----------	---------------------	----------------------------------	---	--

All original equipment manufacturers names and part numbers are used for identification purposes only, and we are in no way implying that our products are original equipment parts. Prices subject to change without notice.



Replaces John Deere 2500E Hybrid Riding Greens Mower Parts

Verti-Cut Unit - Serial up to 030000

Verti-Cut Reel & Frame



Item No	R&R Part No.	OEM Part No.	Description	Qty Req	Order Quantity
21	RET16704	ET16704	Retainer	1	
22	RET14592	ET14592	Spring - Reel Bearing	1	
23	RET14566	ET14566	Seal - Reel	2	
24	R254-78	JD8188	Tapered Bearing Cone	2	
25	R254-79	JD8226	Cup - Bearing	2	
<i>Detail Description: Use R254-79M installation mandrel to properly install race.:</i>					
26	RAMT5112	AMT5112	Bracket - Roller RH Rear	1	
26	RAMT5113	AMT5113	Bracket - Roller LH Rear	1	
27	RMT6483	MT6483	Nut - Adjusting Rear Roller	2	
28	R453011	24M7096	Washer - Flat 3/8 SAE Y/Zinc	2	
29	R19M7383	19M7383	Bolt - Rear Roller Adj 55 mm Long	2	
30	R03M7307	03M7307	Bolt - Carriage M10	2	
31	R14M7517	14M7517	Locknut - 10mm x 1.5 ESNA	2	
32	R24H1307	24H1307	Washer - Flat 13/32 x 1 x 1/16	4	
33	RAMT2574	AMT2574	Frame - Verticut	1	
34	RAMT1479	AMT1479	Chain - Link	1	
35	R24H1682	24H1682	Washer - 13/32 x 7/8 x 1/8	1	
36	R11M7012	11M7012	Pin - Cotter 1/8 x 5/8	2	
37	RMT7294	MT2647, MT7294	Housing - Reel	2	
38	R302-5	JD7797, JD7842, JD7844	Fitting - Grease	2	

All original equipment manufacturers names and part numbers are used for identification purposes only, and we are in no way implying that our products are original equipment parts. Prices subject to change without notice.



Replaces John Deere 2500E Hybrid Riding Greens Mower Parts

Verti-Cut Unit - Serial up to 030000
Verti-Cut Reel & Frame



Item No	R&R Part No.	OEM Part No.	Description	Qty Req	Order Quantity
39	RMT3015	MT3015	Bracket - RH - Extended	2	
40	RMT3072	MT3072	Bracket - LH - Extended	2	
41	R3219-1	14H860	Nut - 1/4-28	2	
42	R170714	E14814	Fitting - Pressure Relief	2	
43	R03M7184	03M7184	Bolt - Carriage M8	4	
44	RR30587	30587, R30587	Pin - Dowell 1/4 Dia. x .75	4	
45	RAMT2261	AMT2261	Kit - Bolt w/Clip	2	
46	R19M8008	19M8008	Bolt - Hex HD M8-1.25 x 35	6	
47	RMT6476	MT6476	Counterweight	1	
48	RH135891	H135891	Locknut - 10mm x 1.5 Flanged 10.9	4	
<i>Detail Description: High Strength:</i>					
49	RET17715	ET17715	Shaft - Vertical Mower	1	
50	RC17964	C17964	Ring - Retaining HD	1	
51	R24H1513	24H1513	Washer	4	
52	RET17053	ET17053	Nut - 1-1/8-7 Jam Incl Set Screw	1	
53	R3245-35	22H841	Screw - Set 1/4-28 x 1/4	1	
54	R14M7296	14M7296	Nut - 10mm x 1.5 Flanged	2	
55	R19M7804	19M7804	Bolt - Flanged Hex M10-1.5 x 40	2	
56	RMT6671	MT6671	Grass Basket	1	
<i>Detail Description:
Please note: Due to excessive air freight charges, this item will be shipped ground freight.:</i>					
57	R22H1004	19H3003	Screw - Set 1/4-28 x 1/2	2	

All original equipment manufacturers names and part numbers are used for identification purposes only, and we are in no way implying that our products are original equipment parts. Prices subject to change without notice.



Replaces John Deere 2500E Hybrid Riding Greens Mower Parts

Verti-Cut Unit - Serial up to 030000

Verti-Cut Reel & Frame



Item No	R&R Part No.	OEM Part No.	Description	Qty Req	Order Quantity
58	RMT6491	MT6491	Bracket - Verticut Frame	1	
59	R19M7785	19M7785	Bolt - Hex Washer M10-1.5 x 25	1	
60	R14M7400	14M7400	Locknut - 10mm	1	
62	RAET10139	AET10139	Cable - Roller Scraper	1	
63	RU45916	14M7298, U45916	Locknut - 10-24 ESNA	2	
65	R500534		Bearing - with Cup	2	
<i>Detail Description: Kit includes: 1 ea R254-78- Bearing Cone & R254-79 Bearing Cone:</i>					
66	RAET11038	AET11038, AET11039, AT11038	Coupler - V-Cut 8 Tooth	1	

All original equipment manufacturers names and part numbers are used for identification purposes only, and we are in no way implying that our products are original equipment parts. Prices subject to change without notice.