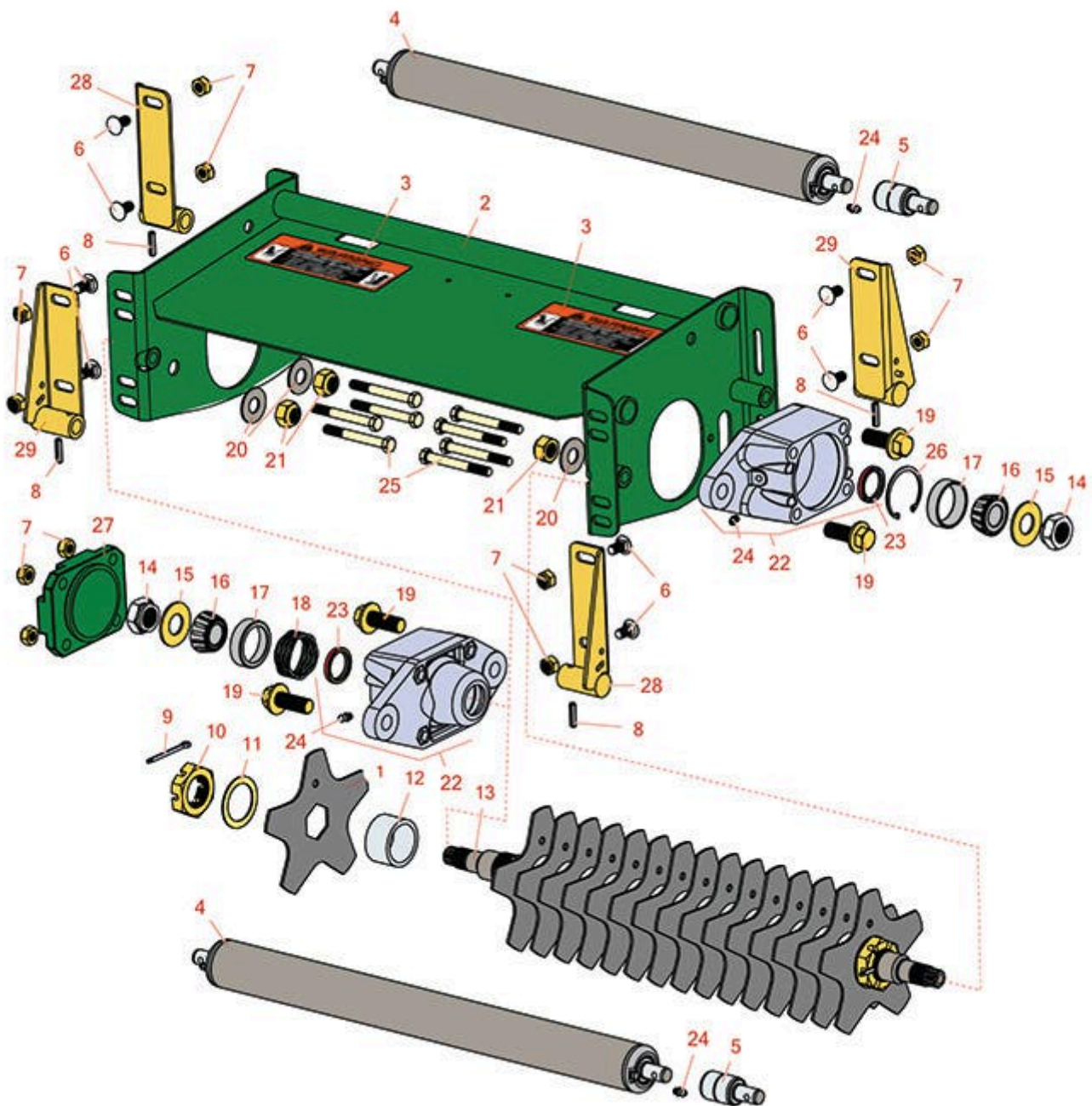




# Replaces John Deere 3225C Reel Mower Parts

Heavy Verti-Cut Unit  
Verti-Cut Reel & Frame



All original equipment manufacturers names and part numbers are used for identification purposes only, and we are in no way implying that our products are original equipment parts. Prices subject to change without notice.



# Replaces John Deere 3225C Reel Mower Parts

Heavy Verti-Cut Unit  
Verti-Cut Reel & Frame



Item No	R&R Part No.	OEM Part No.	Description	Qty Req	Order Quantity
<b>Verti-Cut Blades</b>					
1	RMT6987	MT6987	Verti-Cut Blade	16	
1	RMT6987C		Verti-Cut Blade - Carbide Tipped	16	
<b>Other Parts Available</b>					
2	RAMT479	AMT479	Frame - Verti-Cut	1	
3	RMT1520	MT1520	Label	2	
4	RAET10111	AET10111, AMT2876	Roller - Smooth Tubular Steel	2	
<i>Detail Description: This tubular steel roller uses greasable "water-pump" style bearings.:</i>					
5	RAA35741	AA35741, AET10129, TCA22836	Bearing	4	
<i>Detail Description: 1/4" Side Hole:</i>					
6	R03M7190	03M7190	Bolt - Carriage M10-1.5 x 20	8	
7	R14M7400	14M7400	Locknut - 10mm	8	
8	R34M7113	34M7113	Spring Pin - 6mm x 26mm	4	
9	R50-0	11M7032	Pin - Cotter 3/16 x 2	1	
10	RET17318	ET17318	Nut - Slotted Jam	1	
11	R24H1549	24H1549	Spacer	14	
12	RET17648	ET17648	Spacer	15	
13	RMT770	MT770	Shaft - Verti-Cut	1	
14	RMT1211	MT1211	Locknut - 7/8-14 All Metal	2	
15	RM81551	M81551	Washer - 1.840 OD	2	

All original equipment manufacturers names and part numbers are used for identification purposes only, and we are in no way implying that our products are original equipment parts. Prices subject to change without notice.



# Replaces John Deere 3225C Reel Mower Parts

Heavy Verti-Cut Unit  
Verti-Cut Reel & Frame



Item No	R&R Part No.	OEM Part No.	Description	Qty Req	Order Quantity
16	<b>RJD8960</b>	JD8960	Tapered Bearing Cone	2	
17	<b>R254-90</b>	JD8239	Tapered Bearing Cup	2	
18	<b>RET17510</b>	ET17510	Spring	1	
19	<b>R19M7793</b>	19M7793	Bolt - Hex HD Flanged M16	4	
20	<b>RET16424</b>	ET16424	Washer	4	
21	<b>R14M7328</b>	14M7328	Locknut - 16mm x 2.0 ESNA	4	
22	<b>RAMT683</b>	AMT683	Housing - Bearing w/Zerk and Seal	2	
23	<b>RMT1115</b>	MT1115	Seal - Reel	2	
24	<b>R302-5</b>	JD7797, JD7842, JD7844	Fitting - Grease	2	
25	<b>R19M8197</b>	19M8197	Bolt - Hx HD	8	
26	<b>R32120-65</b>	N51168	Ring - Retaining	1	
27	<b>RET17645</b>	MT7001	Cap - Reel Bearing Housing	1	
28	<b>RAMT5050</b>	AMT5050	Bracket - LH - Roller - V-Cut Unit	2	
<i>Tech Note: LH Front and RH Rear:</i>					
29	<b>RAMT5051</b>	AMT5051	Bracket - RH - Roller - V-Cut Unit	2	
<i>Tech Note: RH Front and LH Rear:</i>					

All original equipment manufacturers names and part numbers are used for identification purposes only, and we are in no way implying that our products are original equipment parts. Prices subject to change without notice.