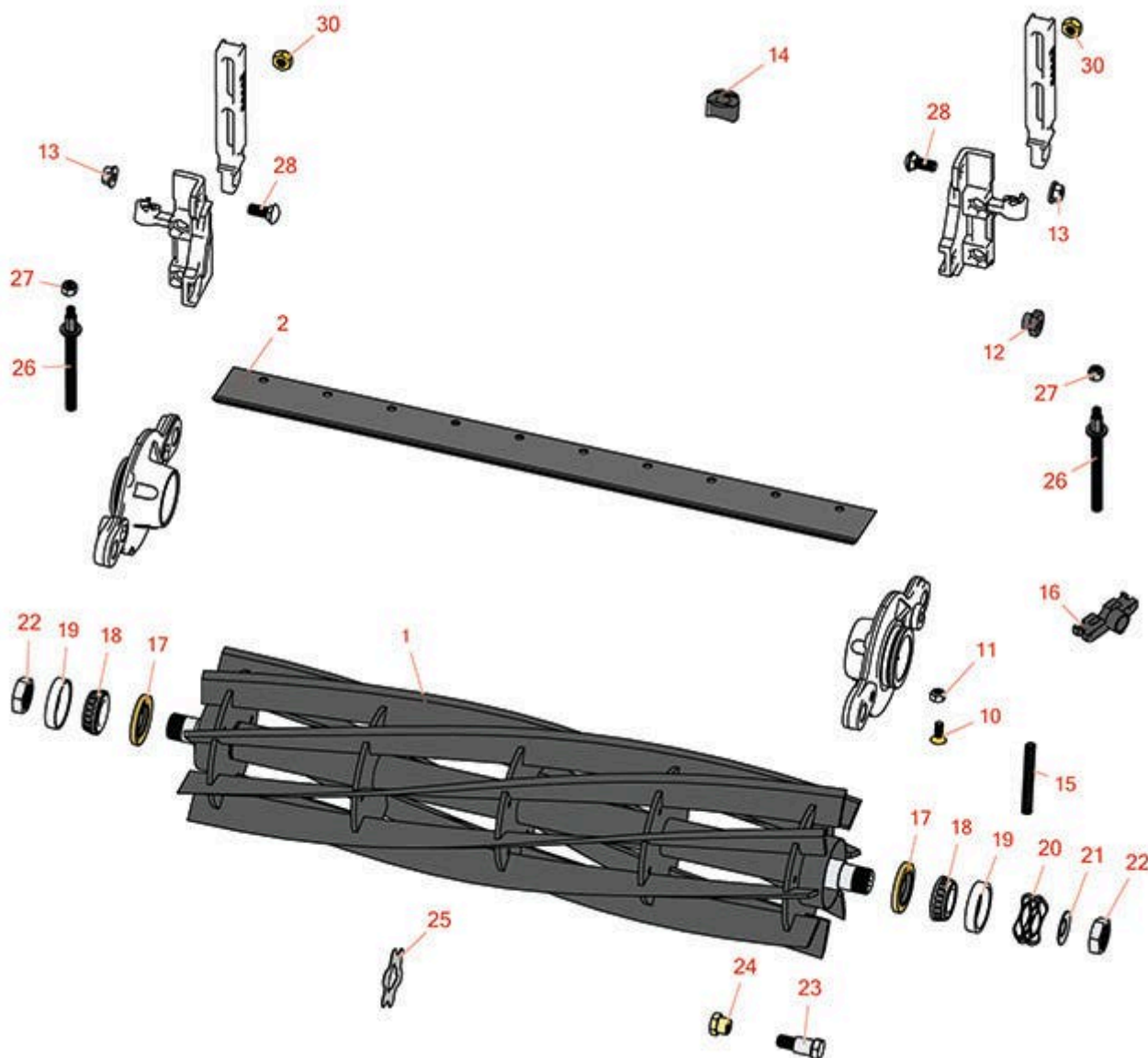




# Replaces John Deere 7200 Reel Mower

## Parts

Cutting Unit  
Reel & Bedknife



All original equipment manufacturers names and part numbers are used for identification purposes only, and we are in no way implying that our products are original equipment parts. Prices subject to change without notice.



# Replaces John Deere 7200 Reel Mower

## Parts

Cutting Unit

Reel & Bedknife



Item No	R&R Part No.	OEM Part No.	Description	Qty Req	Order Quantity
---------	--------------	--------------	-------------	---------	----------------

### R&R Reels, Lifetime Guaranteed

1	<b>RTCA19355</b>	TCA19355	Reel - 5 Blade 26 in	1
---	------------------	----------	----------------------	---

*Detail Description: R&R Reel blades are expertly crafted from premium high carbon-boron alloy steel, heat-treated to perfectly complement both R&R and OEM bedknives. Each reel undergoes precision cylindrical grinding on bearing surfaces, followed by relief grinding for optimal performance. Advanced computer balancing ensures extended reel and bearing life. Backed by our lifetime guarantee against defects in materials and craftsmanship under normal use, R&R Reels deliver unmatched durability and cutting precision you can trust.:*

1	<b>RTCA19356</b>	TCA19356	Reel - 8 Blade 26 in	1
---	------------------	----------	----------------------	---

*Detail Description: R&R Reel blades are expertly crafted from premium high carbon-boron alloy steel, heat-treated to perfectly complement both R&R and OEM bedknives. Each reel undergoes precision cylindrical grinding on bearing surfaces, followed by relief grinding for optimal performance. Advanced computer balancing ensures extended reel and bearing life. Backed by our lifetime guarantee against defects in materials and craftsmanship under normal use, R&R Reels deliver unmatched durability and cutting precision you can trust.:*

1	<b>RTCA19357</b>	TCA19357	Reel - 5 Blade 30 in	1
---	------------------	----------	----------------------	---

*Detail Description: R&R Reel blades are expertly crafted from premium high carbon-boron alloy steel, heat-treated to perfectly complement both R&R and OEM bedknives. Each reel undergoes precision cylindrical grinding on bearing surfaces, followed by relief grinding for optimal performance. Advanced computer balancing ensures extended reel and bearing life. Backed by our lifetime guarantee against defects in materials and craftsmanship under normal use, R&R Reels deliver unmatched durability and cutting precision you can trust.:*

1	<b>RTCA19358</b>	TCA19358	Reel - 8 Blade 30 in	1
---	------------------	----------	----------------------	---

*Detail Description: R&R Reel blades are expertly crafted from premium high carbon-boron alloy steel, heat-treated to perfectly complement both R&R and OEM bedknives. Each reel undergoes precision cylindrical grinding on bearing surfaces, followed by relief grinding for optimal performance. Advanced computer balancing ensures extended reel and bearing life. Backed by our lifetime guarantee against defects in materials and craftsmanship under normal use, R&R Reels deliver unmatched durability and cutting precision you can trust.:*

### R&R Bedknives, Lifetime Guaranteed

2	<b>RET17752</b>	ET17752	Bedknife - 26 in 10 Hole	1
---	-----------------	---------	--------------------------	---

All original equipment manufacturers names and part numbers are used for identification purposes only, and we are in no way implying that our products are original equipment parts. Prices subject to change without notice.



# Replaces John Deere 7200 Reel Mower

## Parts

Cutting Unit

Reel & Bedknife



Item No	R&R Part No.	OEM Part No.	Description	Qty Req	Order Quantity
---------	--------------	--------------	-------------	---------	----------------

*Detail Description:* R&R Bedknives are manufactured from high carbon-boron alloy steel and then hardened to RC46-49 to match the temper of our reel blades and original equipment reels. Bedknives are surface ground on the top and front edge and straightened three times before being packaged with oil for rust prevention. All R&R Bedknives now have an increased front edge grind for added life. All R&R Bedknives are guaranteed against defects in material and workmanship under normal use for the life of the part.:

2	<b>RMT2396</b>	MT2396, MT6949	Bedknife - 26 in Low Cut 10 Hole	1	
---	----------------	-------------------	----------------------------------	---	--

*Detail Description:* R&R Bedknives are manufactured from high carbon-boron alloy steel and then hardened to RC46-49 to match the temper of our reel blades and original equipment reels. Bedknives are surface ground on the top and front edge and straightened three times before being packaged with oil for rust prevention. All R&R Bedknives now have an increased front edge grind for added life. All R&R Bedknives are guaranteed against defects in material and workmanship under normal use for the life of the part.:

2	<b>RMT1973</b>	MT1973	Bedknife - 30 in 12 Hole	1	
---	----------------	--------	--------------------------	---	--

*Detail Description:* R&R Bedknives are manufactured from high carbon-boron alloy steel and then hardened to RC46-49 to match the temper of our reel blades and original equipment reels. Bedknives are surface ground on the top and front edge and straightened three times before being packaged with oil for rust prevention. All R&R Bedknives now have an increased front edge grind for added life. All R&R Bedknives are guaranteed against defects in material and workmanship under normal use for the life of the part.:

### Other Parts Available

10	<b>R19M7573</b>	19M7573	Screw - Bedknife M8-1.25 x 20	0	
----	-----------------	---------	-------------------------------	---	--

11	<b>RH137328</b>	H137328	Locknut	0	
----	-----------------	---------	---------	---	--

12	<b>RTC28635</b>	TCU24555, TCU28635	Eccentric	2	
----	-----------------	-----------------------	-----------	---	--

13	<b>RH135891</b>	H135891	Locknut - 10mm x 1.5 Flanged 10.9	6	
----	-----------------	---------	-----------------------------------	---	--

*Detail Description:* High Strength:

14	<b>RTC25394</b>	TCU25394, TCU27453	Base	2	
----	-----------------	-----------------------	------	---	--

15	<b>RTC25398</b>	TCU25398	Compression Spring	1	
----	-----------------	----------	--------------------	---	--

All original equipment manufacturers names and part numbers are used for identification purposes only, and we are in no way implying that our products are original equipment parts. Prices subject to change without notice.



# Replaces John Deere 7200 Reel Mower

## Parts

*Cutting Unit*

*Reel & Bedknife*



Item No	R&R Part No.	OEM Part No.	Description	Qty Req	Order Quantity
16	RTCU28987	TCU25228, TCU28987	Half Clamp - Roller Bkt	2	
17	RTCU25266	TCU25266	Seal	2	
18	R254-94	JD8933, TCU37582	Tapered Bearing Cone	2	
19	R254-72	JD8253	Cup - Bearing	2	
20	R170610	TCU26530	Spring - Compression	1	
21	RET16678	ET16678	Washer - Spring	1	
22	RTCU26215	TCU26215	Nut - Reel	2	
23	RMT6338	MT6338	Bolt - Shoulder	2	
24	RET16572	ET16572	Nut - Hex	2	
25	RMT2624	MT2624	Knife - Greens Conditioner	46	
26	RTCU26123	TCU26123	Adjuster	2	
27	RM148268	M148268	Lock Nut	2	
28	R03M7191	03M7191	Bolt - Carriage M10 x 25	4	
30	R14M7400	14M7400	Locknut - 10mm	4	

All original equipment manufacturers names and part numbers are used for identification purposes only, and we are in no way implying that our products are original equipment parts. Prices subject to change without notice.