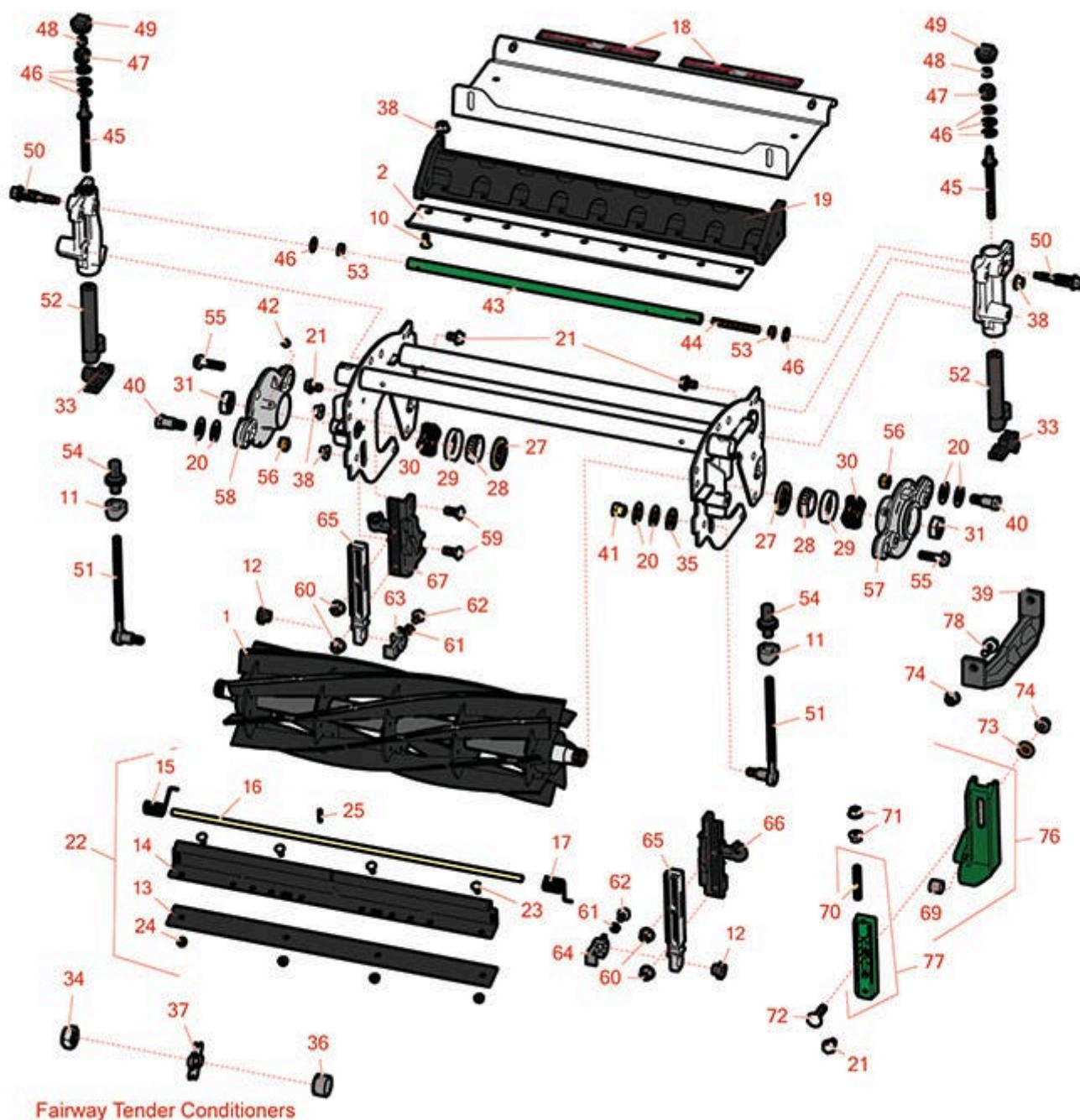




Replaces John Deere 7700 Reel Mower Parts

Cutting Unit - Serial 020001 & Up
Reel & Bedknife



All original equipment manufacturers names and part numbers are used for identification purposes only, and we are in no way implying that our products are original equipment parts. Prices subject to change without notice.



Replaces John Deere 7700 Reel Mower Parts

Cutting Unit - Serial 020001 & Up
Reel & Bedknife



Item No	R&R Part No.	OEM Part No.	Description	Qty Req	Order Quantity
---------	--------------	--------------	-------------	---------	----------------

R&R Reels, Lifetime Guaranteed

1	RTCA19353	TCA19353	Reel - 8 Blade - Internal Splines	1	
---	------------------	----------	-----------------------------------	---	--

Detail Description: R&R Reel blades are expertly crafted from premium high carbon-boron alloy steel, heat-treated to perfectly complement both R&R and OEM bedknives. Each reel undergoes precision cylindrical grinding on bearing surfaces, followed by relief grinding for optimal performance. Advanced computer balancing ensures extended reel and bearing life. Backed by our lifetime guarantee against defects in materials and craftsmanship under normal use, R&R Reels deliver unmatched durability and cutting precision you can trust.:

1	RTCA19354	TCA19354	Reel - 10 Blade - Internal Splines	1	
---	------------------	----------	------------------------------------	---	--

Detail Description: R&R Reel blades are expertly crafted from premium high carbon-boron alloy steel, heat-treated to perfectly complement both R&R and OEM bedknives. Each reel undergoes precision cylindrical grinding on bearing surfaces, followed by relief grinding for optimal performance. Advanced computer balancing ensures extended reel and bearing life. Backed by our lifetime guarantee against defects in materials and craftsmanship under normal use, R&R Reels deliver unmatched durability and cutting precision you can trust.:

R&R Bedknives, Lifetime Guaranteed

2	RET17751	ET17751	Bedknife - Standard 12mm	1	
---	-----------------	---------	--------------------------	---	--

Detail Description: R&R Bedknives are manufactured from high carbon-boron alloy steel and then hardened to RC46-49 to match the temper of our reel blades and original equipment reels. Bedknives are surface ground on the top and front edge and straightened three times before being packaged with oil for rust prevention. All R&R Bedknives now have an increased front edge grind for added life. All R&R Bedknives are guaranteed against defects in material and workmanship under normal use for the life of the part.:

2	RMT1928	MT1928	Bedknife - 9.5mm (3/8)	1	
---	----------------	--------	------------------------	---	--

Detail Description: R&R Bedknives are manufactured from high carbon-boron alloy steel and then hardened to RC46-49 to match the temper of our reel blades and original equipment reels. Bedknives are surface ground on the top and front edge and straightened three times before being packaged with oil for rust prevention. All R&R Bedknives now have an increased front edge grind for added life. All R&R Bedknives are guaranteed against defects in material and workmanship under normal use for the life of the part.:

2	RMT3983	MT3983	Bedknife - 6.3 mm (1/4)	1	
---	----------------	--------	-------------------------	---	--

All original equipment manufacturers names and part numbers are used for identification purposes only, and we are in no way implying that our products are original equipment parts. Prices subject to change without notice.



Replaces John Deere 7700 Reel Mower Parts

Cutting Unit - Serial 020001 & Up
Reel & Bedknife



Item No	R&R Part No.	OEM Part No.	Description	Qty Req	Order Quantity
---------	--------------	--------------	-------------	---------	----------------

Detail Description: R&R Bedknives are manufactured from high carbon-boron alloy steel and then hardened to RC46-49 to match the temper of our reel blades and original equipment reels. Bedknives are surface ground on the top and front edge and straightened three times before being packaged with oil for rust prevention. All R&R Bedknives now have an increased front edge grind for added life. All R&R Bedknives are guaranteed against defects in material and workmanship under normal use for the life of the part.:

R&R Razor Tool Steel Bedknives, Lifetime Guaranteed

2	R130135		Bedknife - Razor Tool Steel - 22 High Cut	1	
---	----------------	--	-------------------------------------------	---	--

Detail Description: R&R Razor bedknives are manufactured from premium alloy tool steel steel and then hardened to RC48-51 to match the temper of our Razor reel blades and original equipment premium series reels. Bedknives are surface ground on the top and front edge and specially packaged for rust prevention. All R&R Bedknives now have an increased front edge grind for added life. All R&R Bedknives are guaranteed against defects in material and workmanship under normal use for the life of the part. You can expect up to double the life over standard bedknives.:

Other Parts Available

10	R19M7573	19M7573	Screw - Bedknife M8-1.25 x 20	9	
11	RTC25394	TCU25394, TCU27453	Base	2	
12	RTC28635	TCU24555, TCU28635	Eccentric	2	
13	RMT2595	MT2595, MT2895	Scraper Blade - Solid Roller	1	
14	R500571	MT2369	Bar - Scraper	1	
15	RET17630	ET17630	Spring - Torsion RH	1	
16	RET17757	ET11757, ET17757	Pin - Scraper	1	
17	RET17629	ET17629	Spring - Torsion LH	1	
18	RMT6517	MT6517	Label - Warning	2	
19	RAMT2973	AMT2973	Backing Bar - Bed Knife	1	

All original equipment manufacturers names and part numbers are used for identification purposes only, and we are in no way implying that our products are original equipment parts. Prices subject to change without notice.



Replaces John Deere 7700 Reel Mower Parts

Cutting Unit - Serial 020001 & Up
Reel & Bedknife



Item No	R&R Part No.	OEM Part No.	Description	Qty Req	Order Quantity
20	RET16678	ET16678	Washer - Spring	4	
21	R19M7783	19M7783	Screw - Bed Bar Mount	6	
22	RBM17684	BM17684	Scraper Kit - Solid Roller SET/5	1	
<i>Detail Description: Includes 20 ea: R03M7221 Bolt, R14M7303 Nut; 5 ea: R34M7010 Pin, R500571 Scraper Bar, RET17629 LH Spring, RET17630 RH Spring, RET17757 Pin, RMT2595 Scraper Blade:</i>					
23	R03M7221	03M7221	Bolt - Carriage M6 x 16	4	
24	R14M7303	14M7303	Nut - 6mm x 1.0 Flanged	4	
25	R34M7010	34M7010	Pin - Spring	1	
27	RTC25266	TCU25266	Seal	2	
28	R254-94	JD8933, TCU37582	Tapered Bearing Cone	2	
29	R254-72	JD8253	Cup - Bearing	2	
30	R170610	TCU26530	Spring - Compression	1	
31	RTC26215	TCU26215	Nut - Reel	2	
33	RTC28987	TCU25228, TCU28987	Half Clamp - Roller Bkt	2	
34	RN198341	N198341	Nut - Nyloc 7/8-14	2	
35	RTC25260	TCU25260	Washer	2	
36	RET14917	ET14917	Spacer	75	
37	RMT2624	MT2624	Knife - Greens Conditioner	38	
38	R14M7396	14M7396	Locknut - Flanged Nyloc	6	
38	RH135891	H135891	Locknut - 10mm x 1.5 Flanged 10.9	9	

All original equipment manufacturers names and part numbers are used for identification purposes only, and we are in no way implying that our products are original equipment parts. Prices subject to change without notice.



Replaces John Deere 7700 Reel Mower Parts

Cutting Unit - Serial 020001 & Up
Reel & Bedknife



Item No	R&R Part No.	OEM Part No.	Description	Qty Req	Order Quantity
<i>Detail Description: High Strength:</i>					
39	RMT2527	MT2527	Shoe - Skid	2	
40	RMT6338	MT6338	Bolt - Shoulder	2	
41	RET16572	ET16572	Nut - Hex	2	
42	R170714	E14814	Fitting - Pressure Relief	2	
43	RTC26729	TCU26729	Tube	1	
44	RTC25398	TCU25398	Compression Spring	1	
45	RTC26123	TCU26123	Adjuster	2	
46	RET16679	ET16679	Washer - Spring	8	
47	RTC40491	TCU24683, TCU40491	Worm Gear	2	
48	RM148268	M148268	Lock Nut	2	
49	RUC16102	TCU24949, UC16102	Cap	2	
50	RTC26458	TCU26458	Worm Gear	2	
51	RTC25317	TCU25317	Adjuster	2	
52	RAUC13597	AUC13597	Adjuster	2	
53	R14M7152	14M7152	Nut - 10mm x 1.5 Jam	2	
54	RUC16137	TCU24955, UC16137	Adjuster	2	
55	R19M7804	19M7804	Bolt - Flanged Hex M10-1.5 x 40	4	
56	RA31867	A31867	Locknut	2	
57	RUC13937	UC13937	Housing - w/o Bearing - LH	1	

All original equipment manufacturers names and part numbers are used for identification purposes only, and we are in no way implying that our products are original equipment parts. Prices subject to change without notice.



Replaces John Deere 7700 Reel Mower Parts

Cutting Unit - Serial 020001 & Up
Reel & Bedknife



Item No	R&R Part No.	OEM Part No.	Description	Qty Req	Order Quantity
58	RUC13941	UC13941	Housing - w/o Bearing - RH	1	
59	R03M7191	03M7191	Bolt - Carriage M10 x 25	4	
60	R14M7465	14M7465	Lock Nut - M10-1.50 Fl	4	
61	R14M7151	14M7151	Nut - Jam Roller Adj	2	
62	R33114-016	19M7162	Bolt - Hx HD 8mm x 1.25 x 15	2	
63	RUC16109	TCU24461, UC16109	Bracket - RH	1	
64	RUC18211	TCU24461, UC18211	Bracket - LH	1	
65	RUC22790	UC22790	Bracket - Front Roller	2	
66	RUC16138	UC16138	Bracket - Front LH	1	
67	RUC16139	UC16139	Bracket - Front RH	1	
69	RMT74	MT74	Bushing - Roller Bkt	2	
70	RET17646	ET17646	Stud - Clamp	2	
71	R14M7296	14M7296	Nut - 10mm x 1.5 Flanged	4	
72	R03M7194	03M7194	Bolt	2	
73	R24H1308	24H1308	Washer	2	
74	R14M7400	14M7400	Locknut - 10mm	4	
76	RAMT100	AMT100, ET17632	Adjuster - R. Front / L. Rear	2	
77	RAET11311	AET11311	Clamp - Roller Bkt	2	
78	R19M7785	19M7785	Bolt - Hex Washer M10-1.5 x 25	4	

All original equipment manufacturers names and part numbers are used for identification purposes only, and we are in no way implying that our products are original equipment parts. Prices subject to change without notice.