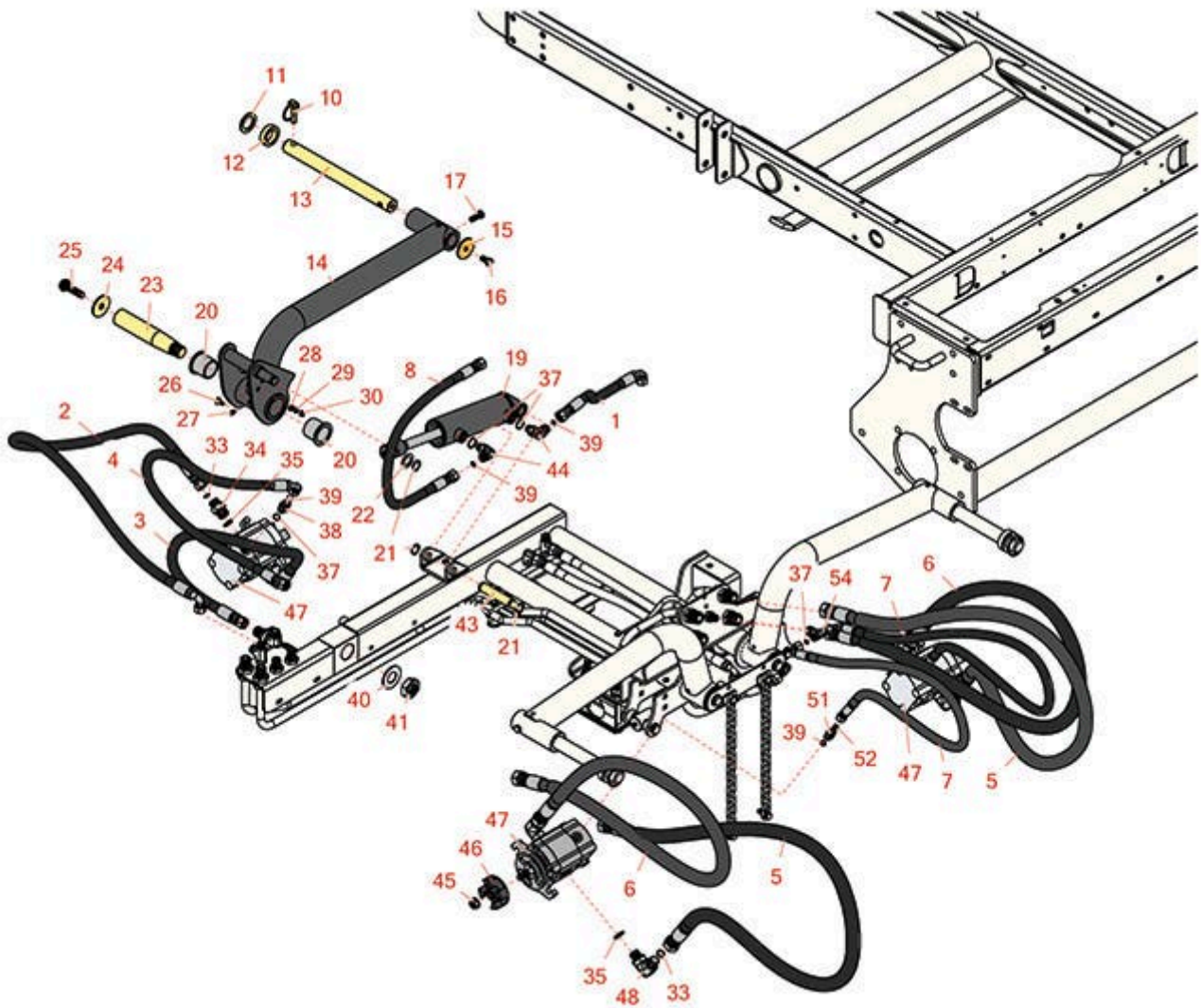




Replaces R&R Products Reel Max 331LP

Parts

*Traction Unit
Rear Lift & Motors*



All original equipment manufacturers names and part numbers are used for identification purposes only, and we are in no way implying that our products are original equipment parts. Prices subject to change without notice.



Replaces R&R Products Reel Max 331LP Parts

*Traction Unit
Rear Lift & Motors*



Item No	R&R Part No.	OEM Part No.	Description	Qty Req	Order Quantity
Hoses					
1	R95-8831		Hydraulic Hose Assy	1	
2	R95-8826		Hydraulic Hose Assy	1	
3	R95-8827		Hydraulic Hose Assy	1	
4	R95-8828		Hydraulic Hose Assy	1	
5	R95-8836		Hydraulic Hose Assy	1	
6	R95-8835		Hydraulic Hose Assy	1	
7	R95-8837	R105-4348	Hydraulic Hose Assy	2	
8	R99-3576		Hydraulic Hose Assy	1	
Other Parts Available					
10	R283-71		Pin - Lynch Heavy Duty	1	
11	R3-6781		Washer - Thrust - Castor Wheel	1	
12	R63-0070	R26-1580	Spacer - 1/2 HOC	1	
13	R104-1392		Shaft-Pivot	1	
14	R115-3475	R95-8985	Lift Arm Assy - Rear	1	
15	R63-7400		Washer - Rebound	1	
16	R400258	R01-150-0800, R01-178-0600, R01-178-0606, R20-45-AD, R31-0200, R31-9910, R3224-1, R323-4	Bolt - Hex HD 3/8-16 x 3/4	1	

All original equipment manufacturers names and part numbers are used for identification purposes only, and we are in no way implying that our products are original equipment parts. Prices subject to change without notice.



Replaces R&R Products Reel Max 331LP Parts

*Traction Unit
Rear Lift & Motors*



Item No	R&R Part No.	OEM Part No.	Description	Qty Req	Order Quantity
17	R323-6	323-6, R01-150-0010, R01-178-0608, R20-47-AD, R20-47-AGD, R3224-2, R49-3510, R908034P, R908332	Bolt - Hex HD 3/8-16 x 1 GR5 YZ	1	
19	R112-9916	R108-9033	Hydraulic Cylinder	1	
20	R69-6470		Bushing - Flanged	2	
21	R32120-93		Snap Ring - HD	3	
22	R3-6498	R47-8270	Washer - Thrust	1	
23	R95-8990		Shaft - Pivot - Rear	1	
24	R75-7730		Washer - Thrust	1	
25	R3234-27		Bolt - 1/2-13 x 2 Hex	1	
26	R3229-1	R01-173-0406, R01-178-0408, R3229-25, R900015P	Bolt - 1/4-20 x 3/4 - Carriage	1	

All original equipment manufacturers names and part numbers are used for identification purposes only, and we are in no way implying that our products are original equipment parts. Prices subject to change without notice.



Replaces R&R Products Reel Max 331LP Parts

*Traction Unit
Rear Lift & Motors*



Item No	R&R Part No.	OEM Part No.	Description	Qty Req	Order Quantity
27	R302-5	R173-0, R21-6010, R255825, R302-37, R302-47, R302-57, R302-58, R302-6, R31-0300, R32-9660, R471214, R471223, R471226, R60-0800, R62-3880, R92-4181, RJD7797, RJD7842, RJD7844, RM0004, RZS48114-04	Fitting - Grease	1	
28	R3256-22	R09061, R24-9-BD, R3-1032, R93-0954, R93-0989	Washer - Flat 1/4 Yellow	1	
29	R3253-3	446130, R01-166-0070, R01-166-0410, R23-9-GD, R24-7150, R352-167, R446128, R446130	Washer - Lock 1/4	1	
30	R443102	R01-188-0420, R22-11-AJD, R3217-5	Nut - 1/4-20 Yellow Zinc	1	
33	R237-30	R23-6320	O-Ring - Seal	6	
34	R340-6		Hydraulic Fitting - Straight	2	
35	R237-80	R327-80	O-Ring	6	

All original equipment manufacturers names and part numbers are used for identification purposes only, and we are in no way implying that our products are original equipment parts. Prices subject to change without notice.



Replaces R&R Products Reel Max 331LP Parts

*Traction Unit
Rear Lift & Motors*



Item No	R&R Part No.	OEM Part No.	Description	Qty Req	Order Quantity
37	R237-42	R31-4160, R339897	O-Ring	4	
38	R340-2	R60-1920	Hydraulic Fitting - Striaight	1	
39	R237-22	R107-8844, R232-72, R237-78	O-Ring	4	
40	R86-1480		Washer - 1 3/4 x 1 x 3/16	1	
41	R3220-9		Nut-Jam	1	
43	R95-8575		Pin	1	
44	R340-77	R340-100, R95-7889	Hydraulic Fitting	2	
45	R32128-48		Locknut - 7/16-20 Flanged	3	
46	R151132		Coupling - Motor	3	
47	R115-8250		Motor - Gear	3	
48	R340-105		Hydraulic Fitting	4	
51	R340-92		Hydraulic Fitting - Striaight	2	
52	R237-21		O-Ring	2	
54	R99-3477		Fitting-Tee	1	

All original equipment manufacturers names and part numbers are used for identification purposes only, and we are in no way implying that our products are original equipment parts. Prices subject to change without notice.