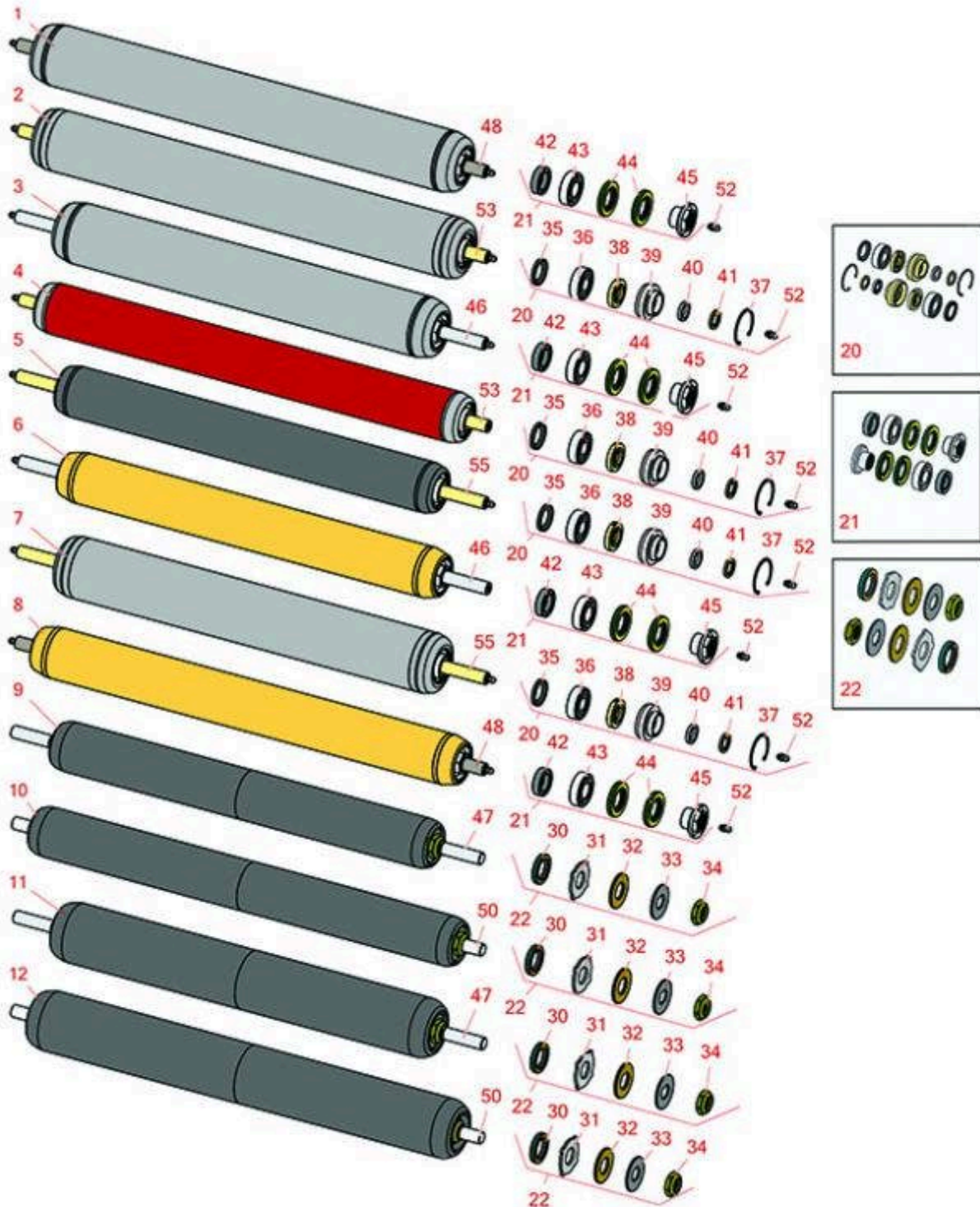




Replaces R&R Products Reel Max 544D

Parts

Cutting Unit
Rear Rollers



All original equipment manufacturers names and part numbers are used for identification purposes only, and we are in no way implying that our products are original equipment parts. Prices subject to change without notice.



Replaces R&R Products Reel Max 544D

Parts

Cutting Unit
Rear Rollers



| Item No | R&R Part No. | OEM Part No. | Description | Qty Req | Order Quantity |
|---------|--------------|--------------|-------------|---------|----------------|
|---------|--------------|--------------|-------------|---------|----------------|

R&R Rollers

| | | | | | |
|--|------------------|------------------------|---------------------------------------|---|--|
| 1 | R114-5415 | 114-5415 | Roller - Smooth Tubular Steel | 0 | |
| <i>Detail Description: Constructed with a through shaft, this heavy duty roller uses greasable stainless ball bearings. (2008 & Up):</i> | | | | | |
| 2 | R107-4024 | 107-4024 | Smooth Tubular Steel Roller - Long | 0 | |
| <i>Detail Description: Constructed with a through shaft, this heavy-duty roller uses greasable ball bearings. (2006 - 2007):</i> | | | | | |
| 3 | R114-5417 | 114-5417 | Roller - Smooth Solid Steel | 0 | |
| <i>Detail Description: Constructed with a through shaft, this heavy-duty roller uses greasable stainless ball bearings. (2008 & Up):</i> | | | | | |
| 4 | R107-4040 | 107-4040 | Roller - Smooth Tubular Steel | 0 | |
| <i>Detail Description: Constructed with a through shaft, this heavy-duty roller uses greasable ball bearings. (2006 - 2007):</i> | | | | | |
| 5 | R110-4066 | 110-4066 | Roller - Smooth Tubular Steel | 0 | |
| <i>Detail Description: Constructed with a through shaft, this heavy-duty roller uses greasable ball bearings. (2006 - 2007):</i> | | | | | |
| 6 | R114-5406 | 114-5406 | Roller - Smooth Tubular Steel - Short | 0 | |
| <i>Detail Description: Constructed with a through shaft, this heavy-duty roller uses greasable stainless ball bearings. (2008 & Up):</i> | | | | | |
| 7 | R110-4065 | 110-4065 | Roller - Smooth Tubular Steel | 0 | |
| <i>Detail Description: Constructed with a through shaft, this heavy-duty roller uses greasable ball bearings. (2006 - 2007):</i> | | | | | |
| 8 | R114-5404 | 114-5404, R137-6107 | Roller - Smooth Tubular Steel - Long | 0 | |
| <i>Detail Description: Constructed with a through shaft, this heavy-duty roller uses greasable stainless ball bearings. (2006 - 2007):</i> | | | | | |

All original equipment manufacturers names and part numbers are used for identification purposes only, and we are in no way implying that our products are original equipment parts. Prices subject to change without notice.



Replaces R&R Products Reel Max 544D

Parts

Cutting Unit
Rear Rollers



| Item No | R&R Part No. | OEM Part No. | Description | Qty Req | Order Quantity |
|---|--------------|--------------|-----------------------------------|---------|----------------|
| 9 | R1503935 | | Roller - Smooth UHMW Polyethylene | 0 | |
| <i>Detail Description: Machined from solid UHMW, this low maintenance roller uses a 1" solid stainless steel shaft and requires no grease. UHMW material prevents build-up of debris. (2006 & Up):</i> | | | | | |
| 10 | R1503943 | | Roller - Smooth UHMW Polyethylene | 0 | |
| <i>Detail Description: Machined from solid UHMW, this low maintenance roller uses a 1" solid stainless steel shaft and requires no grease. UHMW material prevents build-up of debris. (2006 & Up):</i> | | | | | |
| 11 | R1503940 | | Roller - Smooth UHMW Polyethylene | 0 | |
| <i>Detail Description: Machined from solid UHMW, this low maintenance roller uses a 1" solid stainless steel shaft and requires no grease. UHMW material prevents build-up of debris. (2006 & Up):</i> | | | | | |
| 12 | R1503946 | | Roller - Smooth UHMW Polyethylene | 0 | |
| <i>Detail Description: Machined from solid UHMW, this low maintenance roller uses a 1" solid stainless steel shaft and requires no grease. UHMW material prevents build-up of debris. (2006 & Up):</i> | | | | | |
| Overhaul Kits | | | | | |
| 20 | R106-9606 | 106-9606 | Overhaul Kit - Roller | 1 | |
| <i>Detail Description: Include 2 ea: R343667 Bearings, R253-70 Seals, R32120-62 Retaining Rings, R93-1251 Seals, R93-1252 Seals, R93-2931 Washers, R93-3007 Seals:</i> | | | | | |
| 21 | R114-5430 | 114-5430 | Overhaul Kit - Roller | 1 | |
| <i>Detail Description: Includes 4 ea.: R112-7494 Seals; 2 ea.: R302-5 Grease Zerks, R114-3717 Seals, R112-5290 Bearings & R114-3745 Locknuts:</i> | | | | | |
| 22 | R101399 | | Overhaul Kit - UHMW 2 Pc Roller | 1 | |
| <i>Detail Description: Fits all R&R 2-1/2" - 3-1/2" Dia. Black UHMW Plastic Rollers that do not use ball bearings.. Includes 2 ea.: R1503230 Star Washers, R1503470 Seals, R150333 Thrust Washers, R3296-15 Locknuts, R1503471 Bronze Thrust Washers:</i> | | | | | |

All original equipment manufacturers names and part numbers are used for identification purposes only, and we are in no way implying that our products are original equipment parts. Prices subject to change without notice.



Replaces R&R Products Reel Max 544D

Parts

Cutting Unit
Rear Rollers



| Item No | R&R Part No. | OEM Part No. | Description | Qty Req | Order Quantity |
|---------|--------------|--------------|-------------|---------|----------------|
|---------|--------------|--------------|-------------|---------|----------------|

Other Parts Available

| | | | | | |
|----|-----------|--|-------------------------------|---|--|
| 30 | R1503470 | | Seal - Inner Wiper | 2 | |
| 31 | R1503230 | | Washer - Thrust Outer Keyed | 2 | |
| 32 | R1503471 | | Washer - Thrust SAE660 Bronze | 2 | |
| 33 | R150333 | R150447 | Washer - Flat Keyed Outer SS | 2 | |
| 34 | R3296-15 | 367029, R1503473, R32118-5, R32127-23, R32127-47, R367029, R445748, RG-371, RN101345 | Locknut - 3/4-16 Nylon Jam | 2 | |
| 35 | R93-3007 | 93-3007 | Seal | 4 | |
| 36 | R343667 | 109966, R109966, R251-6 | Bearing - Ball | 4 | |
| 37 | R32120-62 | 32120-62 | Ring - Retaining | 2 | |
| 38 | R93-1251 | 93-1251 | Seal | 2 | |
| 39 | R93-1252 | 93-1252 | Seal - Outer | 2 | |
| 40 | R253-70 | 253-70 | Seal | 2 | |
| 41 | R93-2931 | 93-2931 | Washer - Roller Seal | 2 | |
| 42 | R114-3717 | 114-3717 | Seal | 2 | |
| 43 | R112-5290 | 112-5290, R251-346, R72-5430 | Bearing - Stainless | 2 | |
| 44 | R112-7494 | 112-7494 | Seal | 4 | |

All original equipment manufacturers names and part numbers are used for identification purposes only, and we are in no way implying that our products are original equipment parts. Prices subject to change without notice.



Replaces R&R Products Reel Max 544D

Parts

Cutting Unit

Rear Rollers



| Item No | R&R Part No. | OEM Part No. | Description | Qty Req | Order Quantity |
|-------------------------------------|--------------|--|-------------------------------|---------|----------------|
| 45 | R114-3745 | 114-5411, R106-6939, R108-3151, R114-5411 | Locknut - Bearing - Stainless | 0 | |
| 46 | R114-5410 | 114-5410 | Shaft - Short - Rear Roller | 1 | |
| <i>Tech Note: 2008 & Newer:</i> | | | | | |
| 47 | R1503938 | | Shaft - Short Rear Rollers | 1 | |
| 48 | R114-5407 | 114-5407 | Shaft - Long Rear Roller | 1 | |
| 50 | R1503949 | | Shaft - Long Rear Rollers | 1 | |
| 52 | R302-5 | R173-0, R21-6010, R255825, R302-37, R302-47, R302-57, R302-58, R302-6, R31-0300, R32-9660, R471214, R471223, R471226, R60-0800, R62-3880, R92-4181, RJD7797, RJD7842, RJD7844, RM0004, RZS48114-04 | Fitting - Grease | 2 | |
| 53 | R107-3296 | 107-3296, R99-5717 | Shaft - Rear Long Roller | 1 | |
| 55 | R110-4060 | 110-4060 | Shaft | 1 | |

All original equipment manufacturers names and part numbers are used for identification purposes only, and we are in no way implying that our products are original equipment parts. Prices subject to change without notice.