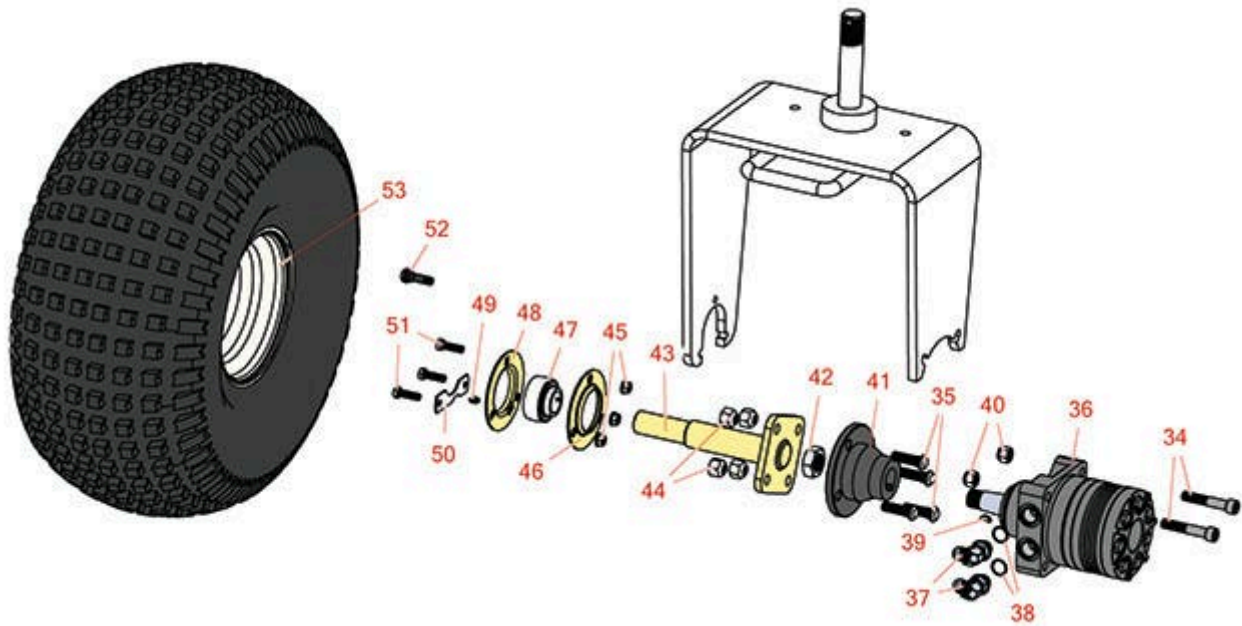




# Replaces R&R Products Sand Max 316

## Parts

*Traction Unit  
Front Wheel*



All original equipment manufacturers names and part numbers are used for identification purposes only, and we are in no way implying that our products are original equipment parts. Prices subject to change without notice.



# Replaces R&R Products Sand Max 316

## Parts

Traction Unit  
Front Wheel



Item No	R&R Part No.	OEM Part No.	Description	Qty Req	Order Quantity
---------	--------------	--------------	-------------	---------	----------------

### Tires

0	<b>TIRES</b>		<a href="#">Click Here to View Complete Tire Selection</a>	0	
---	--------------	--	--	---	--

### Other Parts Available

34	<b>R3274-93</b>		Bolt - Soc HD Cap	4	
35	<b>R10-6830</b>		Stud - 1/2-20 x 1 3/4	4	
36	<b>R75-9830</b>	R49-8620	Hydraulic Motor - Front	1	
37	<b>R353-427</b>		Fitting - 45 Deg	2	
38	<b>R237-80</b>	R327-80	O-Ring	2	
39	<b>R3257-3</b>		Key - Woodruff	1	
40	<b>RF5003</b>	3296-23, R32127-29, R32131-5, R32132-5, R3296-23, R64229-05, RZS04021-07	Locknut - ESNA 1/2-13	2	
41	<b>R93-6838-03</b>	R17-4710-03, R93-6838	Hub-Wheel	1	
42	<b>R26-3790</b>		Nut - Hex - Wheel Motor 1-20	1	
43	<b>R92-8969</b>	R18-6290	Spindle	1	
44	<b>R242-50</b>		Nut - 1/2-20 Wheel	4	
45	<b>R3296-39</b>	3296-39, R32127-25, R32128-36, R3296-17, R3296-22, R915663P, R99-7443	Locknut - 3/8-16 Nylon	3	
46	<b>R85-8950</b>		Flange - Ball Bearing	1	

All original equipment manufacturers names and part numbers are used for identification purposes only, and we are in no way implying that our products are original equipment parts. Prices subject to change without notice.



# Replaces R&R Products Sand Max 316

## Parts

Traction Unit  
Front Wheel



Item No	R&R Part No.	OEM Part No.	Description	Qty Req	Order Quantity
47	<b>R251-352</b>		Bearing	1	
48	<b>R85-8940</b>		Flange - w/Zerk	1	
49	<b>R302-5</b>	R173-0, R21-6010, R255825, R302-37, R302-47, R302-57, R302-58, R302-6, R31-0300, R32-9660, R471214, R471223, R471226, R60-0800, R62-3880, R92-4181, RJD7797, RJD7842, RJD7844, RM0004, RZS48114-04	Fitting - Grease	1	
50	<b>R88-8350</b>		Tab-Bearing	1	
51	<b>R400264</b>	323-7, R01-150-0180, R01-178-0610, R19H1732, R20-48-AD, R20-48-AGD, R32-9160, R3224-3, R323-29, R323-7, R400264, R908035P	Bolt - Hex HD 3/8-16 x 1-1/4	3	
52	<b>R232-24</b>	R232-35, R341680, R363233, R814687	Stem - Valve w/ Cap	1	

All original equipment manufacturers names and part numbers are used for identification purposes only, and we are in no way implying that our products are original equipment parts. Prices subject to change without notice.



# Replaces R&R Products Sand Max 316 Parts

*Traction Unit  
Front Wheel*



Item No	R&R Part No.	OEM Part No.	Description	Qty Req	Order Quantity
53	R94-6116	R114-4643, R242-53, R242-86, R46-4810	Rim - 8x8.5 White	1	

All original equipment manufacturers names and part numbers are used for identification purposes only, and we are in no way implying that our products are original equipment parts. Prices subject to change without notice.