

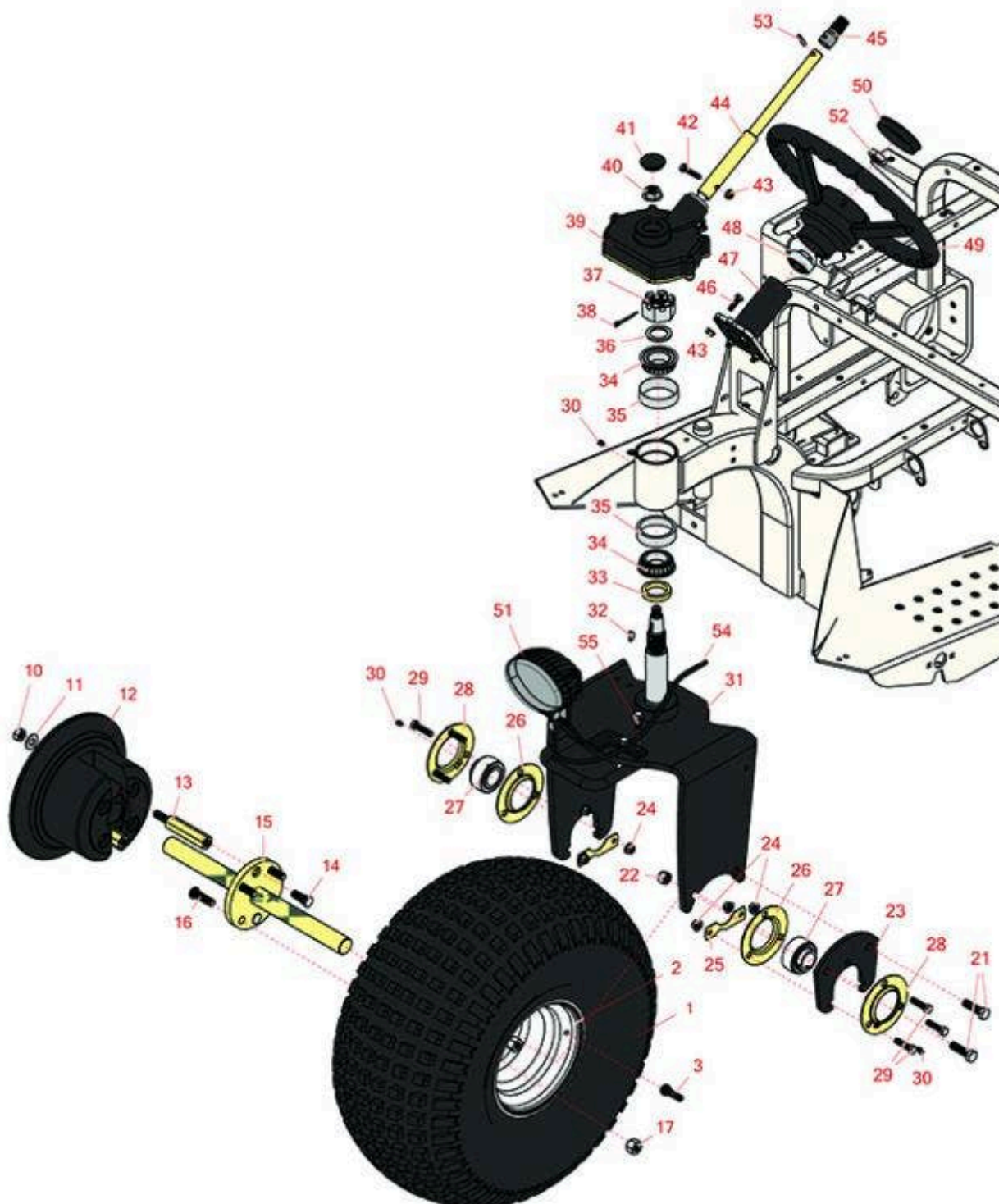


Replaces R&R Products Sand Max 416

Parts

Traction Unit

Front Wheel & Steering



All original equipment manufacturers names and part numbers are used for identification purposes only, and we are in no way implying that our products are original equipment parts. Prices subject to change without notice.



Replaces R&R Products Sand Max 416

Parts

Traction Unit

Front Wheel & Steering



Item No	R&R Part No.	OEM Part No.	Description	Qty Req	Order Quantity
---------	--------------	--------------	-------------	---------	----------------

Tires

1	RCT537050	R546547	Tire - 22x11.00-8 Nhs (2 Ply) Carlisle Knobby	1	
---	------------------	---------	--	---	--

***Detail Description:** Elevate your off-road adventures with the Carlisle Knobby tire. This tire offers a unique design with options available in both solid and dimple tread patterns. Whether you're tackling rugged trails or navigating through challenging terrain, the Carlisle Knobby tire delivers maximum performance and traction. It is specially designed for ATVs and golf carts, providing the reliability and durability you need for your outdoor adventures. Upgrade your ATV or golf cart with the Carlisle Knobby tire and experience the difference it makes in your outdoor excursions. Maximize your traction, durability, and versatility. Buy the Carlisle Knobby tire today and unleash the full potential of your off-road adventures.:*

2	R94-6116	R114-4643, R242-53, R242-86, R46-4810	Rim - 8x8.5 White	1	
---	-----------------	--	-------------------	---	--

3	R232-24	R232-35, R341680, R363233, R814687	Stem - Valve w/ Cap	1	
---	----------------	---	---------------------	---	--

Other Parts Available

10	R3296-19	R30-5020, R32118-3, R32127-26, R32127-41, R60-6530	Locknut - 1/2-20	2	
11	R87-7270-01	R87-7270	Washer - Flat 1/2	2	
12	R112-7641-03		Weight - Wheel	1	
13	R151063		Hex Stud - Wheel	2	
14	R108-7662		Stud - Wheel - 1/2-20 x 2	2	
15	R112-7673	R151061	Axle Shaft Assy	1	
16	R10-6830		Stud - 1/2-20 x 1 3/4	4	
17	R242-50		Nut - 1/2-20 Wheel	4	

All original equipment manufacturers names and part numbers are used for identification purposes only, and we are in no way implying that our products are original equipment parts. Prices subject to change without notice.



Replaces R&R Products Sand Max 416

Parts

Traction Unit

Front Wheel & Steering



Item No	R&R Part No.	OEM Part No.	Description	Qty Req	Order Quantity
21	R325-7	R01-150-0380, R01-178-0814, R3226-3, R48-9490	Bolt - 1/2-13 x 1 3/4 Hex HD Gr 5	2	
22	RF5003	3296-23, R32127-29, R32131-5, R32132-5, R3296-23, R64229-05, RZS04021-07	Locknut - ESNA 1/2-13	2	
23	R151062		Adapter - Steering Fork	1	
24	R104-8301	R109-6658, R133-7570	Locknut - 3/8-16 Nylon Flanged	6	
25	R88-8350		Tab-Bearing	2	
26	R85-8950		Flange - Ball Bearing	2	
27	R251-352		Bearing	2	
28	R85-8940		Flange - w/Zerk	2	
29	R400264	323-7, R01-150-0180, R01-178-0610, R19H1732, R20-48-AD, R20-48-AGD, R32-9160, R3224-3, R323-29, R323-7, R400264, R908035P	Bolt - Hex HD 3/8-16 x 1-1/4	6	

All original equipment manufacturers names and part numbers are used for identification purposes only, and we are in no way implying that our products are original equipment parts. Prices subject to change without notice.



Replaces R&R Products Sand Max 416

Parts

Traction Unit

Front Wheel & Steering



Item No	R&R Part No.	OEM Part No.	Description	Qty Req	Order Quantity
30	R302-5	R173-0, R21-6010, R255825, R302-37, R302-47, R302-57, R302-58, R302-6, R31-0300, R32-9660, R471214, R471223, R471226, R60-0800, R62-3880, R92-4181, RJD7797, RJD7842, RJD7844, RM0004, RZS48114-04	Fitting - Grease	3	
31	R107-3543B		Fork Assy - Black	1	
32	R463017	R2119-561, R31-4400, R3257-5	Key - Woodruff	1	
33	R108-5432		Spacer-Bearing	1	
34	R107-7589		Tapered Bearing Cone - w/Seal	2	
35	R107-7590		Tapered Bearing Cup	2	
36	R110-8195		Washer-Steering	1	
37	R32136-9		Nut - 1-1/4-12 Slotted	1	
38	R3272-37		Pin - Cotter 1/4 x 2-1/2	1	
39	R107-3526		Steering Gearbox Assy	1	
40	R32128-54		Nut - 5/8-18 Hex Serr Flanged	1	
41	R107-3532		Grommet	1	

All original equipment manufacturers names and part numbers are used for identification purposes only, and we are in no way implying that our products are original equipment parts. Prices subject to change without notice.



Replaces R&R Products Sand Max 416

Parts

Traction Unit

Front Wheel & Steering



Item No	R&R Part No.	OEM Part No.	Description	Qty Req	Order Quantity
42	R322-7	R01-150-0750, R01-150-0760, R01-178-0512, R20-28-AD, R20-28-AGD, R3223-4	Bolt - Hex HD 5/16-18 x 1-1/2	1	
43	R104-8300	R119-4041	Locknut - 5/16-18 Flanged Y/Zinc	5	
44	R150865		Shaft - Steering	1	
45	R150922		Splined Shaft - Steering	1	
46	R322-5	322-5, R01-178-0508, R19H1905, R20-26-AD, R20-26-AGD, R30-9000, R400188, R513341, R519755, R908019P	Bolt - Hex HD 5/16-18 x 1	4	
47	R107-3540-03		Tube Assy	1	
48	R106-8448		Bearing	1	
49	R150263	R150255	Wheel - Steering 14 in	1	
50	R150267		Cap - Steering Wheel	1	
51	R151712	R108-6471, R112-9177, R94-9024	LED Oval Work Light - 12 LED 30w	1	
52	R107-2561	R47-6990, R47-7090	Nut - Steering Column	1	
53	R98-0973		Pin - Grooved 1/4 x 1 - 1/8	1	
54	R110-1365		Wiring Harness - Headlight	1	
55	R32144-14	R32104-32, R32104-49	Bolt - Hex Washer 5/16-18 x 5/8	2	

All original equipment manufacturers names and part numbers are used for identification purposes only, and we are in no way implying that our products are original equipment parts. Prices subject to change without notice.



Replaces R&R Products Sand Max 416 Parts

*Traction Unit
Front Wheel & Steering*



All original equipment manufacturers names and part numbers are used for identification purposes only, and we are in no way implying that our products are original equipment parts. Prices subject to change without notice.