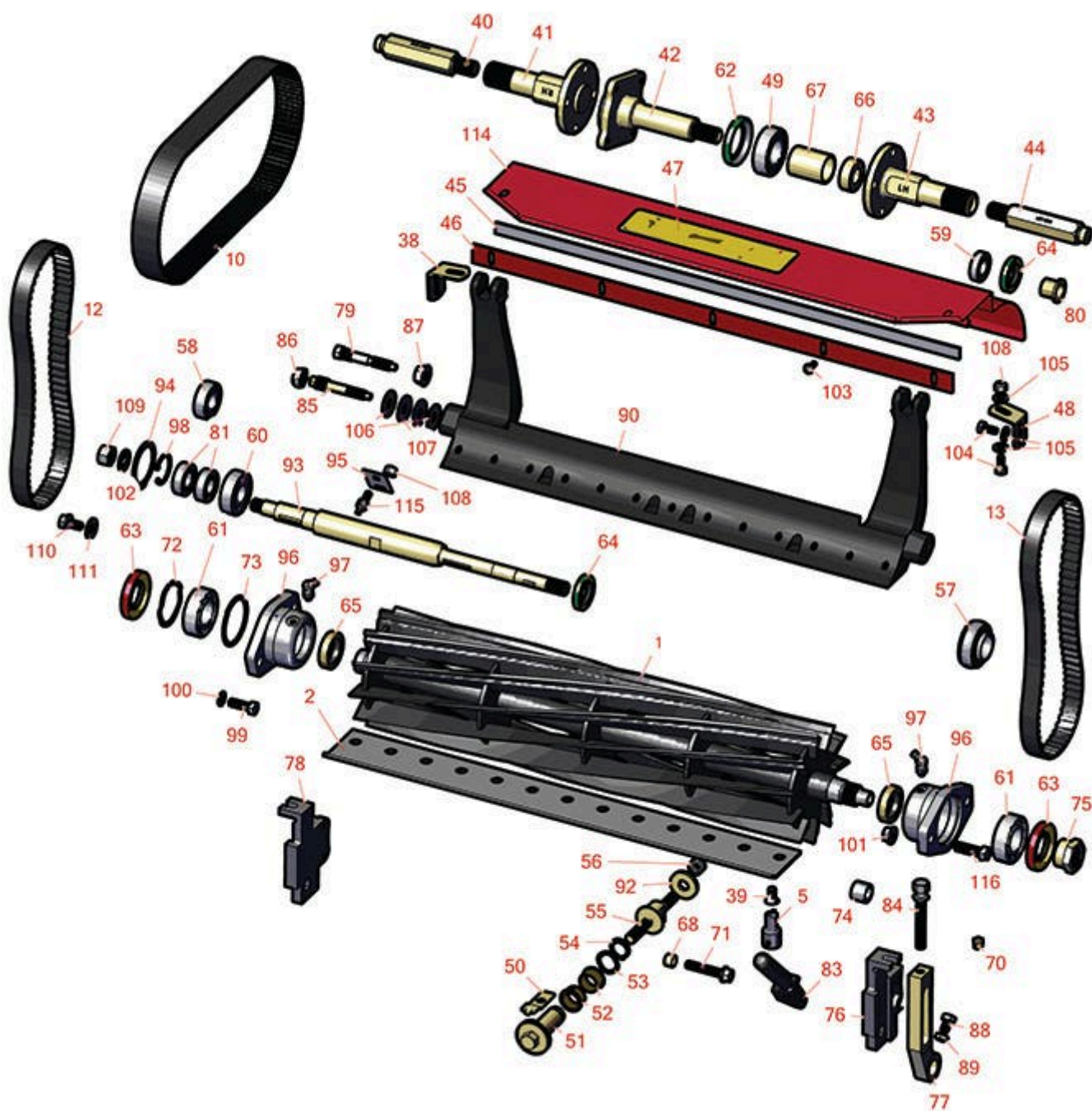




# Replaces Toro Greensmaster 1000 Parts

Mower - Model 04034

Reel & Bedknife



All original equipment manufacturers names and part numbers are used for identification purposes only, and we are in no way implying that our products are original equipment parts. Prices subject to change without notice.



# Replaces Toro Greensmaster 1000 Parts

Mower - Model 04034

Reel & Bedknife



Item No	R&R Part No.	OEM Part No.	Description	Qty Req	Order Quantity
---------	--------------	--------------	-------------	---------	----------------

## R&R Reels, Lifetime Guaranteed

1	<b>R92-9672</b>	92-9672, 93-6087	Reel - 8 Blade	1	
---	-----------------	---------------------	----------------	---	--

*Detail Description: R&R Reel blades are expertly crafted from premium high carbon-boron alloy steel, heat-treated to perfectly complement both R&R and OEM bedknives. Each reel undergoes precision cylindrical grinding on bearing surfaces, followed by relief grinding for optimal performance. Advanced computer balancing ensures extended reel and bearing life. Backed by our lifetime guarantee against defects in materials and craftsmanship under normal use, R&R Reels deliver unmatched durability and cutting precision you can trust.:*

1	<b>R13-8519</b>	13-8519, 14-0839, 65-8200, 92-8653, 93-6097	Reel - 11 Blade	1	
---	-----------------	---	-----------------	---	--

*Detail Description: R&R Reel blades are expertly crafted from premium high carbon-boron alloy steel, heat-treated to perfectly complement both R&R and OEM bedknives. Each reel undergoes precision cylindrical grinding on bearing surfaces, followed by relief grinding for optimal performance. Advanced computer balancing ensures extended reel and bearing life. Backed by our lifetime guarantee against defects in materials and craftsmanship under normal use, R&R Reels deliver unmatched durability and cutting precision you can trust.:*

1	<b>R150755</b>	117-1449	Reel - 14 Blade	1	
---	----------------	----------	-----------------	---	--

*Detail Description: R&R Reel blades are expertly crafted from premium high carbon-boron alloy steel, heat-treated to perfectly complement both R&R and OEM bedknives. Each reel undergoes precision cylindrical grinding on bearing surfaces, followed by relief grinding for optimal performance. Advanced computer balancing ensures extended reel and bearing life. Backed by our lifetime guarantee against defects in materials and craftsmanship under normal use, R&R Reels deliver unmatched durability and cutting precision you can trust.:*

## R&R Bedknives, Lifetime Guaranteed

2	<b>R93-4262</b>	65-8250, 93-4262, 93-4263	Bedknife - Micro Cut .062 - .187 HOC	1	
---	-----------------	---------------------------------	---	---	--

*Detail Description: R&R Bedknives are manufactured from high carbon-boron alloy steel and then hardened to RC46-49 to match the temper of our reel blades and original equipment reels. Bedknives are surface ground on the top and front edge and straightened three times before being packaged with oil for rust prevention. All R&R Bedknives now have an increased front edge grind for added life. All R&R Bedknives are guaranteed against defects in material and workmanship under normal use for the life of the part.:*

All original equipment manufacturers names and part numbers are used for identification purposes only, and we are in no way implying that our products are original equipment parts. Prices subject to change without notice.



# Replaces Toro Greensmaster 1000 Parts

Mower - Model 04034

Reel & Bedknife



Item No	R&R Part No.	OEM Part No.	Description	Qty Req	Order Quantity
2	<b>R108-4303</b>	104-7720, 108-4303	Bedknife - Micro Cut Extended .062 - .187 HOC	1	
<i>Detail Description: R&amp;R Bedknives are manufactured from high carbon-boron alloy steel and then hardened to RC46-49 to match the temper of our reel blades and original equipment reels. Bedknives are surface ground on the top and front edge and straightened three times before being packaged with oil for rust prevention. All R&amp;R Bedknives now have an increased front edge grind for added life. All R&amp;R Bedknives are guaranteed against defects in material and workmanship under normal use for the life of the part.:</i>					
2	<b>R93-4263</b>	63-8560, 66-9320, 93-4263, 93-6039	Bedknife - Tournament Cut .125 - .500 HOC	1	
<i>Detail Description: R&amp;R Bedknives are manufactured from high carbon-boron alloy steel and then hardened to RC46-49 to match the temper of our reel blades and original equipment reels. Bedknives are surface ground on the top and front edge and straightened three times before being packaged with oil for rust prevention. All R&amp;R Bedknives now have an increased front edge grind for added life. All R&amp;R Bedknives are guaranteed against defects in material and workmanship under normal use for the life of the part.:</i>					
2	<b>R108-4302</b>	108-4301, 108-4302	Bedknife - Tournament Cut Extended .125 - .500 HOC	1	
<i>Detail Description: R&amp;R Bedknives are manufactured from high carbon-boron alloy steel and then hardened to RC46-49 to match the temper of our reel blades and original equipment reels. Bedknives are surface ground on the top and front edge and straightened three times before being packaged with oil for rust prevention. All R&amp;R Bedknives now have an increased front edge grind for added life. All R&amp;R Bedknives are guaranteed against defects in material and workmanship under normal use for the life of the part.:</i>					
2	<b>R93-4264</b>	57-4960, 63-8470, 93-4264	Bedknife - Low Cut .187 - 1.00 HOC	1	
<i>Detail Description: R&amp;R Bedknives are manufactured from high carbon-boron alloy steel and then hardened to RC46-49 to match the temper of our reel blades and original equipment reels. Bedknives are surface ground on the top and front edge and straightened three times before being packaged with oil for rust prevention. All R&amp;R Bedknives now have an increased front edge grind for added life. All R&amp;R Bedknives are guaranteed against defects in material and workmanship under normal use for the life of the part.:</i>					
2	<b>R94-6392</b>	62-2500, 94-6392	Bedknife - High Cut .312 - 1.00 HOC	1	

All original equipment manufacturers names and part numbers are used for identification purposes only, and we are in no way implying that our products are original equipment parts. Prices subject to change without notice.



# Replaces Toro Greensmaster 1000 Parts

Mower - Model 04034

Reel & Bedknife



Item No	R&R Part No.	OEM Part No.	Description	Qty Req	Order Quantity
---------	--------------	--------------	-------------	---------	----------------

*Detail Description: R&R Bedknives are manufactured from high carbon-boron alloy steel and then hardened to RC46-49 to match the temper of our reel blades and original equipment reels. Bedknives are surface ground on the top and front edge and straightened three times before being packaged with oil for rust prevention. All R&R Bedknives now have an increased front edge grind for added life. All R&R Bedknives are guaranteed against defects in material and workmanship under normal use for the life of the part.:*

2	<b>R150466</b>	63-8600, 64-6393, 94-6393	Bedknife - Super Thick .312 - 1.00 HOC	1	
---	----------------	---------------------------------	---	---	--

*Detail Description: R&R Bedknives are manufactured from high carbon-boron alloy steel and then hardened to RC46-49 to match the temper of our reel blades and original equipment reels. Bedknives are surface ground on the top and front edge and straightened three times before being packaged with oil for rust prevention. All R&R Bedknives now have an increased front edge grind for added life. All R&R Bedknives are guaranteed against defects in material and workmanship under normal use for the life of the part.:*

2	<b>R63-8610</b>	63-8610	Bedknife - Fairway Cut .375 - 1.00 HOC	1	
---	-----------------	---------	---	---	--

*Detail Description: R&R Bedknives are manufactured from high carbon-boron alloy steel and then hardened to RC46-49 to match the temper of our reel blades and original equipment reels. Bedknives are surface ground on the top and front edge and straightened three times before being packaged with oil for rust prevention. All R&R Bedknives now have an increased front edge grind for added life. All R&R Bedknives are guaranteed against defects in material and workmanship under normal use for the life of the part.:*

## R&R Razor Tool Steel Bedknives, Lifetime Guaranteed

2	<b>R115-1880</b>	115-1880	Bedknife - Razor Tool Steel - 21 Micro Cut .062 - .187 HOC	1	
---	------------------	----------	---	---	--

*Detail Description: R&R Razor bedknives are manufactured from premium alloy tool steel steel and then hardened to RC48-51 to match the temper of our Razor reel blades and original equipment premium series reels. Bedknives are surface ground on the top and front edge and specially packaged for rust prevention. All R&R Bedknives now have an increased front edge grind for added life. All R&R Bedknives are guaranteed against defects in material and workmanship under normal use for the life of the part. You can expect up to double the life over standard bedknives.:*

2	<b>R115-1881</b>	115-1881	Bedknife - Razor Tool Steel - 21 Tournament Cut .125 - .500 HOC	1	
---	------------------	----------	---	---	--

All original equipment manufacturers names and part numbers are used for identification purposes only, and we are in no way implying that our products are original equipment parts. Prices subject to change without notice.



# Replaces Toro Greensmaster 1000 Parts

Mower - Model 04034

Reel & Bedknife



Item No	R&R Part No.	OEM Part No.	Description	Qty Req	Order Quantity
---------	--------------	--------------	-------------	---------	----------------

*Detail Description: R&R Razor bedknives are manufactured from premium alloy tool steel steel and then hardened to RC48-51 to match the temper of our Razor reel blades and original equipment premium series reels. Bedknives are surface ground on the top and front edge and specially packaged for rust prevention. All R&R Bedknives now have an increased front edge grind for added life. All R&R Bedknives are guaranteed against defects in material and workmanship under normal use for the life of the part. You can expect up to double the life over standard bedknives.:*

## Overhaul Kits and Service Tools

5	<b>R51-0880</b>	51-0880	Bedknife Screw Driver Tool	0
---	-----------------	---------	----------------------------	---

*Detail Description: Easily install and remove bed knife screws with the help of a ratchet with 3/8" drive. Tool manufactured with hardened alloy steel.:*

## Belts

10	<b>R65-9080</b>	65-9080	Belt - Countershaft	1
12	<b>R150525</b>	65-6200	Belt - Reel Drive	1
13	<b>R150527</b>	65-6210	Belt - Drum Drive	1
38	<b>R65-6460</b>	65-6460	Bracket - RH	1
39	<b>R119-4151</b>	119-4151	Screw - Bedknife 5/16-18 x 17/32	13
39	<b>R150476</b>	3-3816, 3-6462, 57-4910	Screw - Bedknife 5/16-18 x 5/8	13
40	<b>R88-7590</b>	88-7590	Shaft - Transport Wheel RH	1
41	<b>R88-7510</b>	88-7510	Shaft - Extension RH Drum	1
42	<b>R94-5850</b>	94-5850	Spindle - Rear Roller Drum	1
43	<b>R88-7520</b>	88-7520	Shaft - Extension LH Drum	1
44	<b>R88-7580</b>	88-7580	Shaft - Transport Wheel LH	1
45	<b>R106-2619</b>	106-2619	Seal - Strip	1

All original equipment manufacturers names and part numbers are used for identification purposes only, and we are in no way implying that our products are original equipment parts. Prices subject to change without notice.





# Replaces Toro Greensmaster 1000 Parts

Mower - Model 04034

Reel & Bedknife



Item No	R&R Part No.	OEM Part No.	Description	Qty Req	Order Quantity
46	<b>R36-7260</b>	36-7260	Bar - Cut Off Grass Shield	1	
47	<b>R93-8064</b>	93-8064	Decal - Warning	1	
48	<b>R65-6450</b>	65-6450	Bracket - LH	1	
49	<b>RA203605</b>	251-82, 6610	Bearing	2	
50	<b>R99-2097</b>	99-2097	Detent - Bed Bar Adjuster	2	
51	<b>R106-5363</b>	106-5363	Shaft - Adjusting - Bed Bar - Stainless	2	
52	<b>R106-5344</b>	106-5344	Bushing - Flanged and Keyed	4	
53	<b>R106-5335</b>	106-5335	Wave Washer - Reel Adjusting	2	
54	<b>R32120-93</b>	32120-93	Snap Ring - HD	2	
55	<b>R99-2096</b>	99-2096	Screw - Bed Bar Adjustment - M10 Thrd 1 End	2	
56	<b>R99-3755</b>	99-3755	Spring - Bed Bar Adjusting	2	
57	<b>R71-1360</b>	251-219, 251-253, 251-254, 251-320, 71-1360, 88-7880, 94-3405	Bearing	2	
58	<b>R38-7820</b>	100-1048, 251-277, 251-5, 38-7820	Bearing - Ball	2	
59	<b>R251-336</b>	251-336	Bearing	2	

All original equipment manufacturers names and part numbers are used for identification purposes only, and we are in no way implying that our products are original equipment parts. Prices subject to change without notice.



## Replaces Toro Greensmaster 1000 Parts

Mower - Model 04034

Reel & Bedknife



Item No	R&R Part No.	OEM Part No.	Description	Qty Req	Order Quantity
60	R251-318	251-11, 251-204, 251-318, 251-38, 251-89	Bearing - Ball	1	
61	R251-342	251-342	Bearing - Reel	2	
62	R253-159	253-159	Seal - Drum	2	
63	R253-163	253-163	Seal - Reel	0	
64	R364170	253-118, 62-3400	Seal	1	
65	R253-96	253-96	Seal - Oil Single Lip Reel	1	
66	R65-6530	65-6530	Spacer - Seal	1	
67	R65-6520	65-6520	Spacer	1	
68	R65-7910	65-7910	Spacer - Latch	2	
70	R170714	302-34, 302-39, 62-3520	Fitting - Pressure Relief	2	
71	R94-5780	94-5780	Bolt - 5/16-18 x 1 3/4 Hx Fl	4	
72	R3290-485	3290-485	Washer - Wave	1	
73	R32151-92	32151-92	Retaining Ring	1	
74	R63-9510	63-9480, 63-9510	Bushing - Rubber For Bed Bar	2	
75	R92-7302	65-8240, 86-7160, 92-7302	Locknut - Reel	1	
76	R93-6049	93-6049	Bracket - HOC LH	1	
77	R93-6090	93-6090	Arm - Roller HOC	2	

All original equipment manufacturers names and part numbers are used for identification purposes only, and we are in no way implying that our products are original equipment parts. Prices subject to change without notice.



## Replaces Toro Greensmaster 1000 Parts

Mower - Model 04034

Reel & Bedknife



Item No	R&R Part No.	OEM Part No.	Description	Qty Req	Order Quantity
78	<b>R93-6048</b>	93-6048	Bracket - HOC RH	1	
79	<b>R65-6270</b>	119-4050, 65-6270	Bolt - Bed Bar	2	
80	<b>R65-8770</b>	65-8770	Bushing	2	
81	<b>R251-338</b>	251-338	Bearing - Ball	2	
83	<b>R65-8570</b>	65-7250, 65-8570	Rod - Mounting Grass Basket	2	
84	<b>R93-6051</b>	93-6051	Bolt - HOC	2	
85	<b>R117-9493</b>	117-9493	Bolt - Bed Bar - Hardened	2	
86	<b>R3296-28</b>	119-4154, 140-9234, 32127-34, 32128-7, 32128-8, 32136-7, 3296-28	Nut - 1/2-20 ESNA Jam	2	
87	<b>R32128-48</b>	32128-48	Locknut - 7/16-20 Flanged	2	
88	<b>R3242-4</b>	3242-4	Screw - Set Sq HD 5/16-18 x 1	2	
89	<b>RP457-2</b>	01-191-0518, 22-12-AJK, 3218-2, 513299, P457-2	Nut - Jam 5/16-18 Zinc	2	
90	<b>R112-9279-03</b>	112-9279-03	Bedbar - Aggressive	1	
92	<b>R99-2098</b>	99-2098	Washer - Bed Bar Adjuster	1	
93	<b>R93-6056</b>	93-6056	Shaft - Power	1	
94	<b>R32151-95</b>	32151-90, 32151-95	Retaining Ring	1	

All original equipment manufacturers names and part numbers are used for identification purposes only, and we are in no way implying that our products are original equipment parts. Prices subject to change without notice.





## Replaces Toro Greensmaster 1000 Parts

Mower - Model 04034

Reel & Bedknife



Item No	R&R Part No.	OEM Part No.	Description	Qty Req	Order Quantity
95	<b>R65-6290</b>	65-6259, 65-6290	Spring-Detent	1	
96	<b>R65-8640</b>	65-6090, 65-8640	Housing - Bearing	1	
97	<b>R700414</b>	302-11, 302-19, 302-4, 32-8170	Zerk - Grease 1/4-28 45 Deg	1	
98	<b>R32151-89</b>	32151-89	Retaining Ring - Bowed	1	
99	<b>R322-5</b>	01-178-0508, 20-26-AD, 20-26-AGD, 30-9000, 322-5, 513341, 519755, 908019P, N/A	Bolt - Hex HD 5/16-18 x 1	1	
100	<b>R3254-2</b>	3254-2	Washer-Lock, 5/16 Int Star	1	
101	<b>R3296-39</b>	32127-25, 32128-36, 3290-357, 3296-17, 3296-22, 3296-39, 915663P, 99-7443	Locknut - 3/8-16 Nylon	1	
102	<b>R3254-4</b>	21-3890, 26-8050, 3254-4	Washer - Lock 1/2 Z Int Star	1	
103	<b>R32144-73</b>	104-2065, 32144-73	Screw - Machine Hex Washer Head	5	
104	<b>R400106</b>	321-3, 513315, 908002P	Bolt - Hex HD 1/4-20 x 5/8	4	

All original equipment manufacturers names and part numbers are used for identification purposes only, and we are in no way implying that our products are original equipment parts. Prices subject to change without notice.



## Replaces Toro Greensmaster 1000 Parts

Mower - Model 04034

Reel & Bedknife



Item No	R&R Part No.	OEM Part No.	Description	Qty Req	Order Quantity
105	R3256-22	24-9-BD, 3-1032, 3256-1, 3256-22, 93-0954, 93-0989	Washer - Flat 1/4 Yellow	6	
106	R52-2860	119-4150, 52-2860	Washer - Bed Bar Pivot	4	
107	R52-2900	52-2900	Washer - Nylon	4	
108	R301504	2296-42, 301504, 32127-24, 32128-33, 32146-17, 3296-16, 3296-42, 3296-42 , 915661P	Locknut - ESNA 1/4-20	4	
109	R3219-5	01-188-0820, 22-15-BJD, 22-15-BJKD, 3219-5	Nut - 1/2-20	1	
110	R3234-14	3234-14, 3234-23	Bolt - Hex Serrated Washer HD	4	
111	R88-7200	88-7200	Washer - Flat	1	
114	R112-9471	112-9471	Grass Shield	1	
115	R93-9014	65-7020, 92-7676, 93-9014	Pin-Clutch, Actuat	1	

All original equipment manufacturers names and part numbers are used for identification purposes only, and we are in no way implying that our products are original equipment parts. Prices subject to change without notice.



# Replaces Toro Greensmaster 1000 Parts

Mower - Model 04034

Reel & Bedknife



Item No	R&R Part No.	OEM Part No.	Description	Qty Req	Order Quantity
116	<b>R400264</b>	01-150-0180, 01-178-0610, 20-48-AD, 20-48-AGD, 32-9160, 3224-3, 323-29, 323-7, 400264, 908035P	Bolt - Hex HD 3/8-16 x 1-1/4	4	

All original equipment manufacturers names and part numbers are used for identification purposes only, and we are in no way implying that our products are original equipment parts. Prices subject to change without notice.