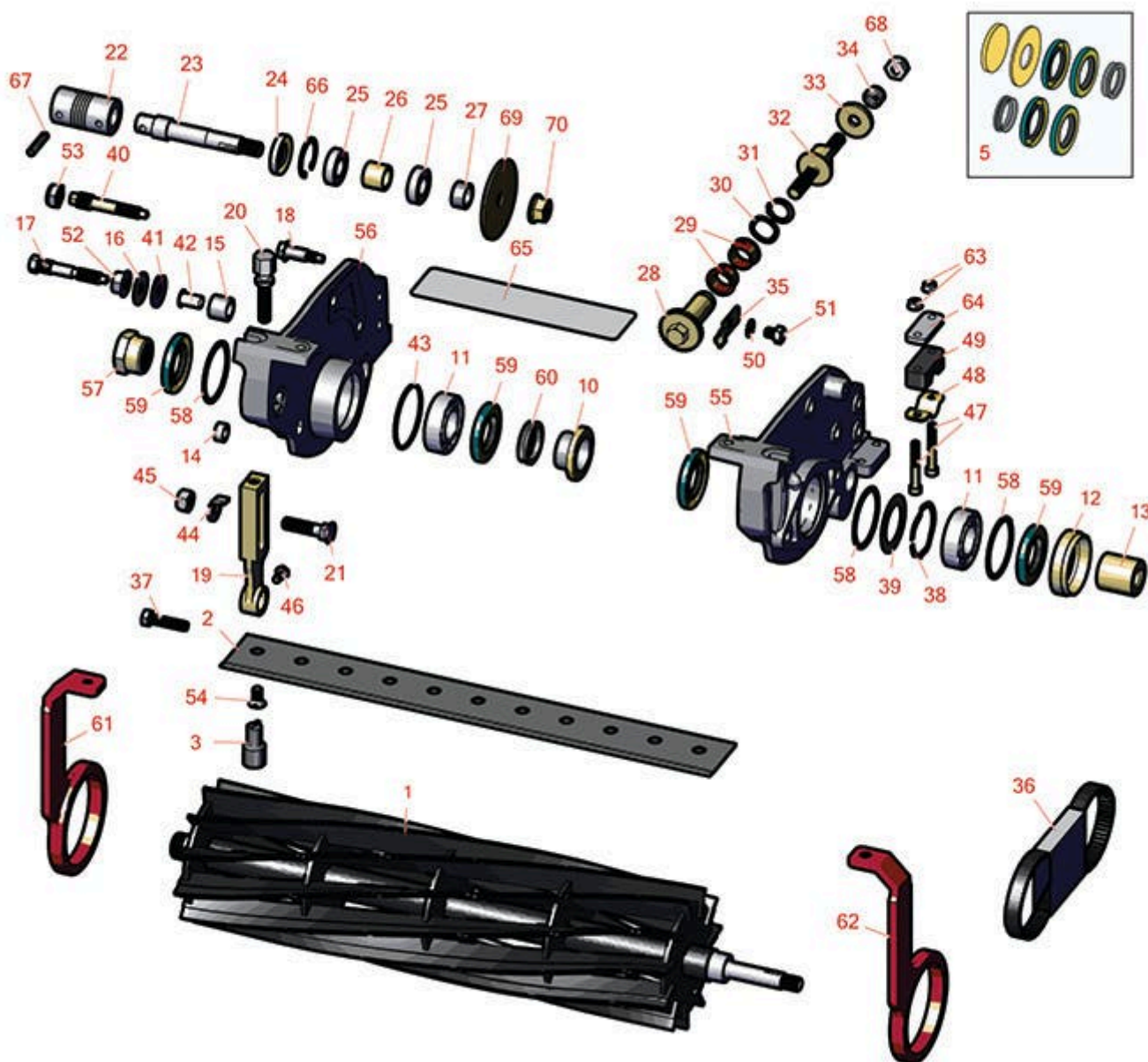




# Replaces Toro Greensmaster Flex 18 Parts

Cutting Unit - Model 04206 & 04207  
Reel & Bedknife



All original equipment manufacturers names and part numbers are used for identification purposes only, and we are in no way implying that our products are original equipment parts. Prices subject to change without notice.



# Replaces Toro Greensmaster Flex 18 Parts

Cutting Unit - Model 04206 & 04207  
Reel & Bedknife



| Item No | R&R Part No. | OEM Part No. | Description | Qty Req | Order Quantity |
|---------|--------------|--------------|-------------|---------|----------------|
|---------|--------------|--------------|-------------|---------|----------------|

## R&R Reels, Lifetime Guaranteed

|   |                  |          |                 |   |
|---|------------------|----------|-----------------|---|
| 1 | <b>R110-2310</b> | 110-2310 | Reel - 11 Blade | 1 |
|---|------------------|----------|-----------------|---|

*Detail Description: R&R Reel blades are manufactured from high carbon-boron alloy steel and then hardened to RC46-49 to match the temper of our bedknives and original equipment bedknives. All R&R Reels are cylindrically ground on bearing surfaces and then relief ground. Reels are then precision computer balanced for extended bearing and reel life. R&R Products Reels are guaranteed against defects in material and workmanship for the life of the reel under normal use.:*

|   |                  |          |                 |   |
|---|------------------|----------|-----------------|---|
| 1 | <b>R115-8255</b> | 115-8255 | Reel - 14 Blade | 1 |
|---|------------------|----------|-----------------|---|

*Detail Description: R&R Reel blades are manufactured from high carbon-boron alloy steel and then hardened to RC46-49 to match the temper of our bedknives and original equipment bedknives. All R&R Reels are cylindrically ground on bearing surfaces and then relief ground. Reels are then precision computer balanced for extended bearing and reel life. R&R Products Reels are guaranteed against defects in material and workmanship for the life of the reel under normal use.:*

## R&R Bedknives, Lifetime Guaranteed

|   |                 |                        |  |   |
|---|-----------------|------------------------|--|---|
| 2 | <b>R98-7260</b> | 98-7260,<br>98-7260-05 | Bedknife - Tournament .125 -<br>.500 HOC | 1 |
|---|-----------------|------------------------|--|---|

*Detail Description: R&R Bedknives are manufactured from high carbon-boron alloy steel and then hardened to RC46-49 to match the temper of our reel blades and original equipment reels. Bedknives are surface ground on the top and front edge and straightened three times before being packaged with oil for rust prevention. All R&R Bedknives now have an increased front edge grind for added life. All R&R Bedknives are guaranteed against defects in material and workmanship under normal use for the life of the part.:*

|   |                 |         |   |   |
|---|-----------------|---------|---|---|
| 2 | <b>R98-7261</b> | 98-7261 | Bedknife - Micro Cut .062 -<br>.187 HOC | 1 |
|---|-----------------|---------|---|---|

*Detail Description: R&R Bedknives are manufactured from high carbon-boron alloy steel and then hardened to RC46-49 to match the temper of our reel blades and original equipment reels. Bedknives are surface ground on the top and front edge and straightened three times before being packaged with oil for rust prevention. All R&R Bedknives now have an increased front edge grind for added life. All R&R Bedknives are guaranteed against defects in material and workmanship under normal use for the life of the part.:*

|   |                  |          |  |   |
|---|------------------|----------|--|---|
| 2 | <b>R110-2300</b> | 110-2300 | Bedknife - Micro Cut<br>Extended .062 - .187 HOC | 1 |
|---|------------------|----------|--|---|

All original equipment manufacturers names and part numbers are used for identification purposes only, and we are in no way implying that our products are original equipment parts. Prices subject to change without notice.



# Replaces Toro Greensmaster Flex 18 Parts

Cutting Unit - Model 04206 & 04207  
Reel & Bedknife



| Item No | R&R Part No. | OEM Part No. | Description | Qty Req | Order Quantity |
|---------|--------------|--------------|-------------|---------|----------------|
|---------|--------------|--------------|-------------|---------|----------------|

*Detail Description:* R&R Bedknives are manufactured from high carbon-boron alloy steel and then hardened to RC46-49 to match the temper of our reel blades and original equipment reels. Bedknives are surface ground on the top and front edge and straightened three times before being packaged with oil for rust prevention. All R&R Bedknives now have an increased front edge grind for added life. All R&R Bedknives are guaranteed against defects in material and workmanship under normal use for the life of the part.:

|   |                  |          |                                    |   |  |
|---|------------------|----------|------------------------------------|---|--|
| 2 | <b>R110-2301</b> | 110-2301 | Bedknife - Low Cut .187 - 1.00 HOC | 1 |  |
|---|------------------|----------|------------------------------------|---|--|

*Detail Description:* R&R Bedknives are manufactured from high carbon-boron alloy steel and then hardened to RC46-49 to match the temper of our reel blades and original equipment reels. Bedknives are surface ground on the top and front edge and straightened three times before being packaged with oil for rust prevention. All R&R Bedknives now have an increased front edge grind for added life. All R&R Bedknives are guaranteed against defects in material and workmanship under normal use for the life of the part.:

## R&R Razor Tool Steel Bedknives, Lifetime Guaranteed

|   |                  |          |  |   |  |
|---|------------------|----------|--|---|--|
| 2 | <b>R117-1530</b> | 117-1530 | Bedknife - Razor Tool Steel - 18 Micro Cut .062 - .187 HOC | 1 |  |
|---|------------------|----------|--|---|--|

*Detail Description:* R&R Razor bedknives are manufactured from premium alloy tool steel steel and then hardened to RC48-51 to match the temper of our Razor reel blades and original equipment premium series reels. Bedknives are surface ground on the top and front edge and specially packaged for rust prevention. All R&R Bedknives now have an increased front edge grind for added life. All R&R Bedknives are guaranteed against defects in material and workmanship under normal use for the life of the part. You can expect up to double the life over standard bedknives.:

|   |                  |          |  |   |  |
|---|------------------|----------|--|---|--|
| 2 | <b>R117-1532</b> | 117-1532 | Bedknife - Razor Tool Steel - Tournament .125 - .500 HOC | 1 |  |
|---|------------------|----------|--|---|--|

*Detail Description:* R&R Razor bedknives are manufactured from premium alloy tool steel steel and then hardened to RC48-51 to match the temper of our Razor reel blades and original equipment premium series reels. Bedknives are surface ground on the top and front edge and specially packaged for rust prevention. All R&R Bedknives now have an increased front edge grind for added life. All R&R Bedknives are guaranteed against defects in material and workmanship under normal use for the life of the part. You can expect up to double the life over standard bedknives.:

## Overhaul Kits and Service Tools

|   |                 |         |                            |   |  |
|---|-----------------|---------|----------------------------|---|--|
| 3 | <b>R51-0880</b> | 51-0880 | Bedknife Screw Driver Tool | 1 |  |
|---|-----------------|---------|----------------------------|---|--|

All original equipment manufacturers names and part numbers are used for identification purposes only, and we are in no way implying that our products are original equipment parts. Prices subject to change without notice.



# Replaces Toro Greensmaster Flex 18 Parts

Cutting Unit - Model 04206 & 04207  
Reel & Bedknife



| Item No | R&R Part No. | OEM Part No. | Description | Qty Req | Order Quantity |
|---------|--------------|--------------|-------------|---------|----------------|
|---------|--------------|--------------|-------------|---------|----------------|

*Detail Description: Easily install and remove bed knife screws with the help of a ratchet with 3/8" drive. Tool manufactured with hardened alloy steel.:*

|   |                  |          |                     |   |  |
|---|------------------|----------|---------------------|---|--|
| 5 | <b>R108-3160</b> | 108-3160 | Overhaul Kit - Reel | 1 |  |
|---|------------------|----------|---------------------|---|--|

*Detail Description: Includes: 4 ea: R107-3233 Reel Seal; 2 ea: R107-3238 V-Ring; 1 ea: R20-9500 Washer & R108-3162:*

## Other Parts Available

|    |                  |                       |                                |   |  |
|----|------------------|-----------------------|--------------------------------|---|--|
| 10 | <b>R108-3150</b> | 106-8435,<br>108-3150 | Sleeve Assy - Reel             | 2 |  |
| 11 | <b>R251-342</b>  | 251-342               | Bearing - Reel                 | 2 |  |
| 12 | <b>R99-2087</b>  | 99-2087               | Spacer                         | 1 |  |
| 13 | <b>R107-3228</b> | 107-3228              | Spacer - Seal                  | 1 |  |
| 14 | <b>R107-3237</b> | 107-3237              | Spacer                         | 2 |  |
| 15 | <b>R63-9510</b>  | 63-9480,<br>63-9510   | Bushing - Rubber For Bed Bar   | 2 |  |
| 16 | <b>R52-2860</b>  | 119-4150,<br>52-2860  | Washer - Bed Bar Pivot         | 4 |  |
| 17 | <b>R65-6270</b>  | 119-4050,<br>65-6270  | Bolt - Bed Bar                 | 2 |  |
| 18 | <b>R105-5774</b> | 105-5774              | Bolt - Shoulder                | 4 |  |
| 19 | <b>R110-7351</b> | 110-7351              | Bracket - High HOC - 5 1/4     | 2 |  |
| 20 | <b>R110-7352</b> | 110-7352              | Screw - HOC 2 5/8 Stainless    | 2 |  |
| 21 | <b>R150647</b>   | 105-5342              | Plow Bolt - HOC - Front Roller | 2 |  |
| 22 | <b>R99-3757</b>  | 99-3757               | Coupling - Flex                | 1 |  |
| 23 | <b>R110-2382</b> | 110-2382              | Shaft - Reel Drive             | 1 |  |
| 24 | <b>R338763</b>   | 107-3205              | Seal                           | 1 |  |

All original equipment manufacturers names and part numbers are used for identification purposes only, and we are in no way implying that our products are original equipment parts. Prices subject to change without notice.



# Replaces Toro Greensmaster Flex 18 Parts

Cutting Unit - Model 04206 & 04207  
Reel & Bedknife



| Item No                             | R&R Part No.      | OEM Part No. | Description                                 | Qty Req | Order Quantity |
|-------------------------------------|-------------------|--------------|---|---------|----------------|
| 25                                  | <b>R251-336</b>   | 251-336      | Bearing                                     | 2       |                |
| 26                                  | <b>R99-2079</b>   | 99-2079      | Spacer                                      | 1       |                |
| 27                                  | <b>R110-2381</b>  | 110-2381     | Spacer                                      | 1       |                |
| 28                                  | <b>R106-5363</b>  | 106-5363     | Shaft - Adjusting - Bed Bar - Stainless     | 2       |                |
| 29                                  | <b>R106-5344</b>  | 106-5344     | Bushing - Flanged and Keyed                 | 4       |                |
| 30                                  | <b>R106-5335</b>  | 106-5335     | Wave Washer - Reel Adjusting                | 2       |                |
| 31                                  | <b>R32120-93</b>  | 32120-93     | Snap Ring - HD                              | 2       |                |
| 32                                  | <b>R99-2096</b>   | 99-2096      | Screw - Bed Bar Adjustment - M10 Thrd 1 End | 2       |                |
| 33                                  | <b>R99-2098</b>   | 99-2098      | Washer - Bed Bar Adjuster                   | 2       |                |
| 34                                  | <b>R99-3755</b>   | 99-3755      | Spring - Bed Bar Adjusting                  | 2       |                |
| 35                                  | <b>R99-2097</b>   | 99-2097      | Detent - Bed Bar Adjuster                   | 2       |                |
| 36                                  | <b>R99-2022</b>   | 99-2022      | Belt - Reel Drive                           | 1       |                |
| 37                                  | <b>R33114-035</b> | 33114-035    | Bolt  | 2       |                |
| 38                                  | <b>R3290-485</b>  | 3290-485     | Washer - Wave                               | 1       |                |
| 39                                  | <b>R105-9943</b>  | 105-9943     | Washer - Thrust                             | 1       |                |
| 40                                  | <b>R117-9493</b>  | 117-9493     | Bolt - Bed Bar - Hardened                   | 2       |                |
| <i>Tech Note: Fits Model 04207:</i> |                   |              |   |         |                |
| 41                                  | <b>R52-2900</b>   | 52-2900      | Washer - Nylon                              | 2       |                |
| 42                                  | <b>R52-2890</b>   | 52-2890      | Bushing - Flanged                           | 2       |                |
| 43                                  | <b>R107-3244</b>  | 107-3244     | O-Ring                                      | 1       |                |

All original equipment manufacturers names and part numbers are used for identification purposes only, and we are in no way implying that our products are original equipment parts. Prices subject to change without notice.



# Replaces Toro Greensmaster Flex 18 Parts

Cutting Unit - Model 04206 & 04207  
Reel & Bedknife



| Item No                                  | R&R Part No.      | OEM Part No.   | Description                    | Qty Req | Order Quantity |
|--|-------------------|--|--------------------------------|---------|----------------|
| 44                                       | <b>R104-2603</b>  | 104-2603,<br>119-4158  | Washer - HOC Bracket           | 2       |                |
| 45                                       | <b>R106-4668</b>  | 106-4668   | Locknut - 10mm x 1.5 Top Lock  | 2       |                |
| 46                                       | <b>R48-7610</b>   | 33113-012,<br>48-7610  | Bolt - Hex HD Nyloc M6 x 12    | 2       |                |
| 47                                       | <b>R106-2603</b>  | 106-2603   | Bolt - Shoulder M6-1.0 x 45    | 4       |                |
| 48                                       | <b>R105-5712</b>  | 105-5712,<br>119-4157  | Retainer - Roller              | 2       |                |
| 49                                       | <b>R105-5710</b>  | 105-5710,<br>119-4166  | Spacer - Roller                | 2       |                |
| 50                                       | <b>R3255-8</b>    | 3255-8   | Washer - Lock 5/16 Ext         | 0       |                |
| 51                                       | <b>R33114-010</b> | 33114-010  | Bolt - Hex HD M8-1.25 x 10     | 2       |                |
| 52                                       | <b>R32128-48</b>  | 32128-48   | Locknut - 7/16-20 Flanged      | 2       |                |
| <i>Tech Note: Fits Model 04206 Only:</i> |                   |  |                                |         |                |
| 53                                       | <b>R3296-28</b>   | 119-4154,<br>140-9234,<br>32127-34,<br>32128-7,<br>32128-8,<br>32136-7,<br>3296-28 | Nut - 1/2-20 ESNA Jam          | 2       |                |
| <i>Tech Note: Fits Model 04207 Only:</i> |                   |  |                                |         |                |
| 54                                       | <b>R150476</b>    | 3-3816,<br>3-6462,<br>57-4910  | Screw - Bedknife 5/16-18 x 5/8 | 11      |                |
| 55                                       | <b>R106-8429</b>  | 106-8429   | Side Plate - LH                | 1       |                |
| 56                                       | <b>R106-8428</b>  | 106-8428   | Side Plate - RH                | 1       |                |
| 57                                       | <b>R107-3227</b>  | 107-3227   | Locknut - Reel                 | 1       |                |

All original equipment manufacturers names and part numbers are used for identification purposes only, and we are in no way implying that our products are original equipment parts. Prices subject to change without notice.



# Replaces Toro Greensmaster Flex 18 Parts

*Cutting Unit - Model 04206 & 04207  
Reel & Bedknife*



| Item No | R&R Part No.        | OEM Part No.                       | Description               | Qty Req | Order Quantity |
|---------|---------------------|------------------------------------|---------------------------|---------|----------------|
| 58      | <b>R32151-92</b>    | 32151-92                           | Retaining Ring            | 2       |                |
| 59      | <b>R107-3233</b>    | 107-3233                           | Seal - Reel               | 4       |                |
| 60      | <b>R107-3238</b>    | 107-3238                           | V-Ring - Reel             | 2       |                |
| 61      | <b>R107-3226-01</b> | 107-3226-01                        | Pitch Arm - RH            | 1       |                |
| 62      | <b>R107-7602-01</b> | 107-7602-01                        | Pitch Arm - LH            | 1       |                |
| 63      | <b>R33003-00</b>    | 33003-00,<br>65-7980               | Hex Nut - Flanged 6-1.0mm | 4       |                |
| 64      | <b>R105-5711</b>    | 105-5711,<br>119-4165              | Shim - Roller             | 2       |                |
| 65      | <b>R93-8064</b>     | 93-8064                            | Decal - Warning           | 1       |                |
| 66      | <b>R32151-51</b>    | 32151-51                           | Retaining Ring            | 1       |                |
| 67      | <b>R32121-69</b>    | 119-4033,<br>120-8095,<br>32121-69 | Pin - Roll 1/4 x 1-1/4    | 2       |                |
| 68      | <b>R33025-00</b>    | 32025-00,<br>33025-00              | Locknut - 10mm x 1.5 Jam  | 2       |                |
| 69      | <b>R110-2391</b>    | 110-2391                           | Washer                    | 1       |                |
| 70      | <b>R104-2610</b>    | 104-2610                           | Nut - HF M12 x 1.75       | 2       |                |

All original equipment manufacturers names and part numbers are used for identification purposes only, and we are in no way implying that our products are original equipment parts. Prices subject to change without notice.