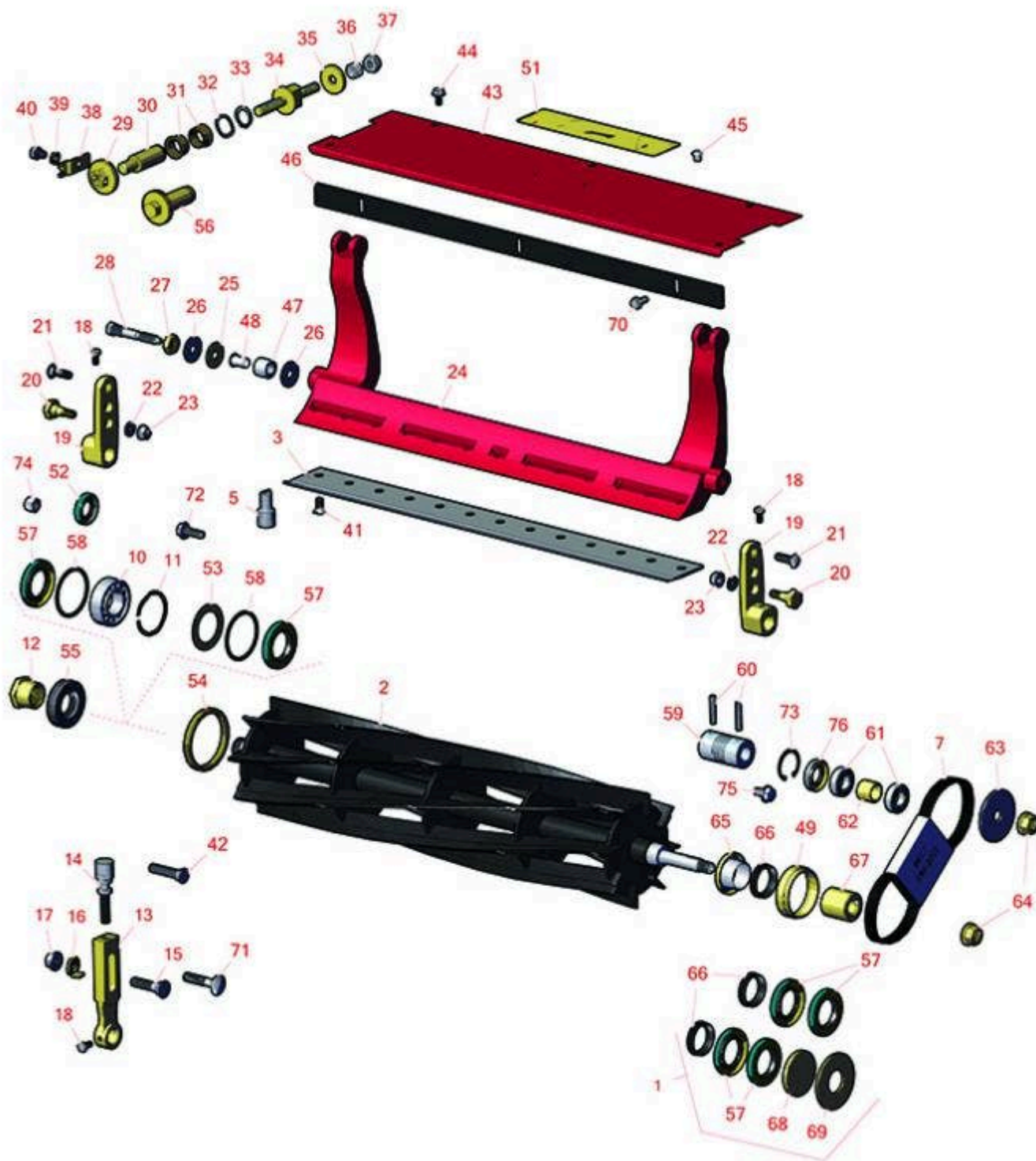




# Replaces Toro Greensmaster Flex 21 Parts

DPA Cutting Unit - Model 04200 (Serial up to 230999999)  
Reel & Bedknife



All original equipment manufacturers names and part numbers are used for identification purposes only, and we are in no way implying that our products are original equipment parts. Prices subject to change without notice.



# Replaces Toro Greensmaster Flex 21 Parts

DPA Cutting Unit - Model 04200 (Serial up to 230999999)  
Reel & Bedknife



Item No	R&R Part No.	OEM Part No.	Description	Qty Req	Order Quantity
---------	--------------	--------------	-------------	---------	----------------

## Overhaul Kits

1	<b>R108-3160</b>	108-3160	Overhaul Kit - Reel	1	
<i>Detail Description: Includes: 4 ea: R107-3233 Reel Seal; 2 ea: R107-3238 V-Ring; 1 ea: R20-9500 Washer &amp; R108-3162:</i>					

## R&R Reels, Lifetime Guaranteed

2	<b>R115-4289</b>	115-4289	Reel - 14 Blade	1	
<i>Detail Description: R&amp;R Reel blades are manufactured from high carbon-boron alloy steel and then hardened to RC46-49 to match the temper of our bedknives and original equipment bedknives. All R&amp;R Reels are cylindrically ground on bearing surfaces and then relief ground. Reels are then precision computer balanced for extended bearing and reel life. R&amp;R Products Reels are guaranteed against defects in material and workmanship for the life of the reel under normal use.:</i>					

2	<b>R104-0500</b>	104-0500	Reel - 11 Blade	1	
<i>Detail Description: R&amp;R Reel blades are manufactured from high carbon-boron alloy steel and then hardened to RC46-49 to match the temper of our bedknives and original equipment bedknives. All R&amp;R Reels are cylindrically ground on bearing surfaces and then relief ground. Reels are then precision computer balanced for extended bearing and reel life. R&amp;R Products Reels are guaranteed against defects in material and workmanship for the life of the reel under normal use.:</i>					

2	<b>R107-7635</b>	107-7635	Reel - 11 Blade	1	
<i>Detail Description: R&amp;R Reel blades are manufactured from high carbon-boron alloy steel and then hardened to RC46-49 to match the temper of our bedknives and original equipment bedknives. All R&amp;R Reels are cylindrically ground on bearing surfaces and then relief ground. Reels are then precision computer balanced for extended bearing and reel life. R&amp;R Products Reels are guaranteed against defects in material and workmanship for the life of the reel under normal use.:</i>					

2	<b>R105-2400</b>	105-2400	Reel - 8 Blade	1	
<i>Detail Description: R&amp;R Reel blades are manufactured from high carbon-boron alloy steel and then hardened to RC46-49 to match the temper of our bedknives and original equipment bedknives. All R&amp;R Reels are cylindrically ground on bearing surfaces and then relief ground. Reels are then precision computer balanced for extended bearing and reel life. R&amp;R Products Reels are guaranteed against defects in material and workmanship for the life of the reel under normal use.:</i>					

All original equipment manufacturers names and part numbers are used for identification purposes only, and we are in no way implying that our products are original equipment parts. Prices subject to change without notice.



# Replaces Toro Greensmaster Flex 21 Parts

DPA Cutting Unit - Model 04200 (Serial up to 230999999)  
Reel & Bedknife



Item No	R&R Part No.	OEM Part No.	Description	Qty Req	Order Quantity
---------	--------------	--------------	-------------	---------	----------------

2	<b>R107-7634</b>	107-7634	Reel - 8 Blade	1	
<i>Detail Description: R&amp;R Reel blades are manufactured from high carbon-boron alloy steel and then hardened to RC46-49 to match the temper of our bedknives and original equipment bedknives. All R&amp;R Reels are cylindrically ground on bearing surfaces and then relief ground. Reels are then precision computer balanced for extended bearing and reel life. R&amp;R Products Reels are guaranteed against defects in material and workmanship for the life of the reel under normal use.:</i>					

## R&R Bedknives, Lifetime Guaranteed

3	<b>R93-4264</b>	57-4960, 63-8470, 93-4264	Bedknife - Low Cut .187 - 1.00 HOC	1	
---	-----------------	---------------------------------	---------------------------------------	---	--

*Detail Description: R&R Bedknives are manufactured from high carbon-boron alloy steel and then hardened to RC46-49 to match the temper of our reel blades and original equipment reels. Bedknives are surface ground on the top and front edge and straightened three times before being packaged with oil for rust prevention. All R&R Bedknives now have an increased front edge grind for added life. All R&R Bedknives are guaranteed against defects in material and workmanship under normal use for the life of the part.:*

3	<b>R108-4302</b>	108-4301, 108-4302	Bedknife - Tournament Cut Extended .125 - .500 HOC	1	
---	------------------	-----------------------	---	---	--

*Detail Description: R&R Bedknives are manufactured from high carbon-boron alloy steel and then hardened to RC46-49 to match the temper of our reel blades and original equipment reels. Bedknives are surface ground on the top and front edge and straightened three times before being packaged with oil for rust prevention. All R&R Bedknives now have an increased front edge grind for added life. All R&R Bedknives are guaranteed against defects in material and workmanship under normal use for the life of the part.:*

3	<b>R93-4263</b>	63-8560, 66-9320, 93-4263, 93-6039	Bedknife - Tournament Cut .125 - .500 HOC	1	
---	-----------------	---	--	---	--

*Detail Description: R&R Bedknives are manufactured from high carbon-boron alloy steel and then hardened to RC46-49 to match the temper of our reel blades and original equipment reels. Bedknives are surface ground on the top and front edge and straightened three times before being packaged with oil for rust prevention. All R&R Bedknives now have an increased front edge grind for added life. All R&R Bedknives are guaranteed against defects in material and workmanship under normal use for the life of the part.:*

All original equipment manufacturers names and part numbers are used for identification purposes only, and we are in no way implying that our products are original equipment parts. Prices subject to change without notice.



# Replaces Toro Greensmaster Flex 21 Parts

DPA Cutting Unit - Model 04200 (Serial up to 230999999)  
Reel & Bedknife



Item No	R&R Part No.	OEM Part No.	Description	Qty Req	Order Quantity
3	<b>R93-4262</b>	65-8250, 93-4262, 93-4263	Bedknife - Micro Cut .062 - .187 HOC	1	
<i>Detail Description: R&amp;R Bedknives are manufactured from high carbon-boron alloy steel and then hardened to RC46-49 to match the temper of our reel blades and original equipment reels. Bedknives are surface ground on the top and front edge and straightened three times before being packaged with oil for rust prevention. All R&amp;R Bedknives now have an increased front edge grind for added life. All R&amp;R Bedknives are guaranteed against defects in material and workmanship under normal use for the life of the part.:</i>					
3	<b>R108-4303</b>	104-7720, 108-4303	Bedknife - Micro Cut Extended .062 - .187 HOC	1	
<i>Detail Description: R&amp;R Bedknives are manufactured from high carbon-boron alloy steel and then hardened to RC46-49 to match the temper of our reel blades and original equipment reels. Bedknives are surface ground on the top and front edge and straightened three times before being packaged with oil for rust prevention. All R&amp;R Bedknives now have an increased front edge grind for added life. All R&amp;R Bedknives are guaranteed against defects in material and workmanship under normal use for the life of the part.:</i>					
3	<b>R94-6392</b>	62-2500, 94-6392	Bedknife - High Cut .312 - 1.00 HOC	1	
<i>Detail Description: R&amp;R Bedknives are manufactured from high carbon-boron alloy steel and then hardened to RC46-49 to match the temper of our reel blades and original equipment reels. Bedknives are surface ground on the top and front edge and straightened three times before being packaged with oil for rust prevention. All R&amp;R Bedknives now have an increased front edge grind for added life. All R&amp;R Bedknives are guaranteed against defects in material and workmanship under normal use for the life of the part.:</i>					
3	<b>R150466</b>	63-8600, 64-6393, 94-6393	Bedknife - Super Thick .312 - 1.00 HOC	1	
<i>Detail Description: R&amp;R Bedknives are manufactured from high carbon-boron alloy steel and then hardened to RC46-49 to match the temper of our reel blades and original equipment reels. Bedknives are surface ground on the top and front edge and straightened three times before being packaged with oil for rust prevention. All R&amp;R Bedknives now have an increased front edge grind for added life. All R&amp;R Bedknives are guaranteed against defects in material and workmanship under normal use for the life of the part.:</i>					

**R&R Razor Tool Steel Bedknives, Lifetime Guaranteed**

All original equipment manufacturers names and part numbers are used for identification purposes only, and we are in no way implying that our products are original equipment parts. Prices subject to change without notice.



# Replaces Toro Greensmaster Flex 21 Parts

DPA Cutting Unit - Model 04200 (Serial up to 230999999)  
Reel & Bedknife



Item No	R&R Part No.	OEM Part No.	Description	Qty Req	Order Quantity
3	<b>R115-1881</b>	115-1881	Bedknife - Razor Tool Steel - 21 Tournament Cut .125 - .500 HOC	1	
<i>Detail Description: R&amp;R Razor bedknives are manufactured from premium alloy tool steel steel and then hardened to RC48-51 to match the temper of our Razor reel blades and original equipment premium series reels. Bedknives are surface ground on the top and front edge and specially packaged for rust prevention. All R&amp;R Bedknives now have an increased front edge grind for added life. All R&amp;R Bedknives are guaranteed against defects in material and workmanship under normal use for the life of the part. You can expect up to double the life over standard bedknives.:</i>					
3	<b>R115-1880</b>	115-1880	Bedknife - Razor Tool Steel - 21 Micro Cut .062 - .187 HOC	1	
<i>Detail Description: R&amp;R Razor bedknives are manufactured from premium alloy tool steel steel and then hardened to RC48-51 to match the temper of our Razor reel blades and original equipment premium series reels. Bedknives are surface ground on the top and front edge and specially packaged for rust prevention. All R&amp;R Bedknives now have an increased front edge grind for added life. All R&amp;R Bedknives are guaranteed against defects in material and workmanship under normal use for the life of the part. You can expect up to double the life over standard bedknives.:</i>					
3	<b>R150492</b>	150492	Bedknife - Razor Tool Steel - 21 Micro Cut Ext	1	
<i>Detail Description: R&amp;R Razor bedknives are manufactured from premium alloy tool steel steel and then hardened to RC48-51 to match the temper of our Razor reel blades and original equipment premium series reels. Bedknives are surface ground on the top and front edge and specially packaged for rust prevention. All R&amp;R Bedknives now have an increased front edge grind for added life. All R&amp;R Bedknives are guaranteed against defects in material and workmanship under normal use for the life of the part. You can expect up to double the life over standard bedknives.:</i>					
3	<b>R112-7475</b>	112-7475	Bedknife - Razor Tool Steel - 22 x 3/8 Fairway	1	
<i>Detail Description: R&amp;R Razor bedknives are manufactured from premium alloy tool steel steel and then hardened to RC48-51 to match the temper of our Razor reel blades and original equipment premium series reels. Bedknives are surface ground on the top and front edge and specially packaged for rust prevention. All R&amp;R Bedknives now have an increased front edge grind for added life. All R&amp;R Bedknives are guaranteed against defects in material and workmanship under normal use for the life of the part. You can expect up to double the life over standard bedknives.:</i>					

All original equipment manufacturers names and part numbers are used for identification purposes only, and we are in no way implying that our products are original equipment parts. Prices subject to change without notice.





# Replaces Toro Greensmaster Flex 21 Parts

DPA Cutting Unit - Model 04200 (Serial up to 230999999)  
Reel & Bedknife



Item No	R&R Part No.	OEM Part No.	Description	Qty Req	Order Quantity
---------	--------------	--------------	-------------	---------	----------------

## Service Tools

5	<b>R51-0880</b>	51-0880	Bedknife Screw Driver Tool	0	
<i>Detail Description: Easily install and remove bed knife screws with the help of a ratchet with 3/8" drive. Tool manufactured with hardened alloy steel.:</i>					

## Belts

7	<b>R99-2022</b>	99-2022	Belt - Reel Drive	1	
7	<b>R99-2023</b>	99-2023	Belt - Drum Drive	2	

## Other Parts Available

10	<b>R251-342</b>	251-342	Bearing - Reel	2	
11	<b>R3290-485</b>	3290-485	Washer - Wave	1	
12	<b>R99-3767</b>	99-3767	Locknut - Reel	1	

*Tech Note: Ser# 210000001-240001000:*

12	<b>R107-3227</b>	107-3227	Locknut - Reel	1	
----	------------------	----------	----------------	---	--

*Tech Note: Ser# 240001001-270999999:*

13	<b>R99-3781</b>	99-3781	Bracket - Front Roller 5 Oal	2	
----	-----------------	---------	------------------------------	---	--

*Tech Note: Ser# 210000001-240001000:*

13	<b>R107-3502</b>	107-3502	Bracket - Front Roller 5-1/4 Oal	2	
----	------------------	----------	----------------------------------	---	--

*Tech Note: Ser# 240001001-270999999:*

13	<b>R110-7351</b>	110-7351	Bracket - High HOC - 5 1/4	2	
----	------------------	----------	----------------------------	---	--

*Tech Note: Ser# 240001001-260006000:*

14	<b>R99-3782</b>	99-3782	Nut - Adjusting Bed Bar	2	
----	-----------------	---------	-------------------------	---	--

All original equipment manufacturers names and part numbers are used for identification purposes only, and we are in no way implying that our products are original equipment parts. Prices subject to change without notice.



# Replaces Toro Greensmaster Flex 21 Parts

DPA Cutting Unit - Model 04200 (Serial up to 230999999)  
Reel & Bedknife



Item No	R&R Part No.	OEM Part No.	Description	Qty Req	Order Quantity
<i>Tech Note: Ser# 210000001-240001000:</i>					
14	<b>R110-7352</b>	110-7352	Screw - HOC 2 5/8 Stainless	2	
<i>Tech Note: Ser# 240001001-270999999:</i>					
14	<b>R106-2635</b>	106-2635	Screw - HOC 2-7/16	2	
<i>Tech Note: Ser# 240001001-260006000:</i>					
15	<b>R150647</b>	105-5342	Plow Bolt - HOC - Front Roller	4	
16	<b>R104-2603</b>	104-2603, 119-4158	Washer - HOC Bracket	2	
17	<b>R14M7296</b>	104-2611	Nut - 10mm x 1.5 Flanged	2	
18	<b>R48-7610</b>	33113-012, 48-7610	Bolt - Hex HD Nyloc M6 x 12	4	
19	<b>R99-3792</b>	99-3792	Bracket - Rear Roller	2	
20	<b>R105-3834</b>	105-3834, 95-1618	Bolt - Shoulder	1	
<i>Tech Note: Ser# 210000001-270999999:</i>					
20	<b>R95-1617</b>	105-3833, 95-1617	Bolt - Eccentric Front Roller Bkt	1	
<i>Tech Note: Ser# 210000001-210999999:</i>					
21	<b>R33124-025</b>	33124-025	Bolt - Carriage M8-1.25 x 25	2	

All original equipment manufacturers names and part numbers are used for identification purposes only, and we are in no way implying that our products are original equipment parts. Prices subject to change without notice.



# Replaces Toro Greensmaster Flex 21 Parts

DPA Cutting Unit - Model 04200 (Serial up to 230999999)  
Reel & Bedknife



Item No	R&R Part No.	OEM Part No.	Description	Qty Req	Order Quantity
22	R453009	01-166-0400, 24-10-BD, 24-9-AD, 32-9650, 3256-2, 3256-23, 3256-3, 3256-67, 3290-217, 3556-3, 4-2390, 7-0152	Washer - Flat 5/16 SAE	4	
22	R310266	3256-23, 3256-3, 3556-3	Washer - Flat 5/16 USS	4	
23	R14M7298	104-2612, 33004-00	Nut - 8mm x 1.25 Flanged	4	
24	R99-3794-01	99-3794-01, 99-3794-03	Bed Bar - Aggressive	1	
25	R52-2860	119-4150, 52-2860	Washer - Bed Bar Pivot	4	
26	R52-2900	52-2900	Washer - Nylon	4	
27	R3220-26	3220-26	Nut - 7/16-20 Jam	2	
<i>Tech Note: Ser# 210000001-240001000:</i>					
27	R107-9045	107-9045, 3220-4	Lock Nut - 7/16-20 Jam	2	
<i>Tech Note: Ser# 240001001-260006000:</i>					
27	R32128-48	32128-48	Locknut - 7/16-20 Flanged	2	
<i>Tech Note: Ser# 240001001-270999999:</i>					
28	R65-6270	119-4050, 65-6270	Bolt - Bed Bar	2	

All original equipment manufacturers names and part numbers are used for identification purposes only, and we are in no way implying that our products are original equipment parts. Prices subject to change without notice.





# Replaces Toro Greensmaster Flex 21 Parts

*DPA Cutting Unit - Model 04200 (Serial up to 230999999)  
Reel & Bedknife*



Item No	R&R Part No.	OEM Part No.	Description	Qty Req	Order Quantity
29	<b>R93-2549</b>	93-2549	Knob - Bed Bar Adjustment	2	
30	<b>R99-2093</b>	99-2093	Nut - Adjusting Bed Bar	2	
31	<b>R256-252</b>	256-252	Bushing - 3/4 ID x 1 Flange	4	
32	<b>R95-3703</b>	95-3703	Washer - Wave	2	
32	<b>R106-5335</b>	106-5335	Wave Washer - Reel Adjusting	2	
33	<b>R32120-93</b>	32120-93	Snap Ring - HD	2	
34	<b>R99-2096</b>	99-2096	Screw - Bed Bar Adjustment - M10 Thrd 1 End	2	
35	<b>R99-2098</b>	99-2098	Washer - Bed Bar Adjuster	2	
36	<b>R99-3755</b>	99-3755	Spring - Bed Bar Adjusting	2	
37	<b>R33025-00</b>	32025-00, 33025-00	Locknut - 10mm x 1.5 Jam	2	
38	<b>R99-2097</b>	99-2097	Detent - Bed Bar Adjuster	2	
39	<b>R3253-4</b>	01-166-0110, 01-166-0510, 23-10-GD, 24-7170, 30-8520, 3253-4, 48-9350, 48-9360, 48-9570, 68-9420, 99-7577	Washer - Lock 5/16 Zinc	2	
40	<b>R33114-010</b>	33114-010	Bolt - Hex HD M8-1.25 x 10	2	
40	<b>R3234-1</b>	321-11, 3234-1	Bolt - Flanged Serrated Hex HD 3/8-16 x 3/4	2	
40	<b>R151379</b>	33114-060, 42-9510	Bolt - Hx HD 8-1.25 x 65mm	2	

All original equipment manufacturers names and part numbers are used for identification purposes only, and we are in no way implying that our products are original equipment parts. Prices subject to change without notice.



# Replaces Toro Greensmaster Flex 21 Parts

DPA Cutting Unit - Model 04200 (Serial up to 230999999)  
Reel & Bedknife



Item No	R&R Part No.	OEM Part No.	Description	Qty Req	Order Quantity
40	R400120	01-150-0990, 01-178-0416, 02-150-0990, 321-11, 3222-4, 33114-010, 33114-060, 513327, 908470	Bolt - Hex HD 1/4-20 x 2	2	
41	R150477	57-4910	Screw - Bedknife 5/16-18 x 1/2	13	
41	R150476	3-3816, 3-6462, 57-4910	Screw - Bedknife 5/16-18 x 5/8	13	
42	R99-3773	99-3773	Bolt- Plow 3/8-16 x 1 3/4	4	
43	R104-2632	104-2632	Shield - Grass	1	
44	R104-2628	104-2628	Bolt - Hex Washer M6-1.0 x 12	8	
45	R3290-271	3269-29, 3290-271	Rivet - Grass Shield	2	
46	R104-2602-03	104-2602-03	Bar - Cut-Off	1	
<i>Tech Note: Ser# 210000001-240001000:</i>					
46	R106-6924-03	106-2617-03, 106-6924-03	Cut-Off Bar	1	
<i>Tech Note: Ser# 240001001-270999999:</i>					
47	R63-9510	63-9480, 63-9510	Bushing - Rubber For Bed Bar	2	
48	R52-2890	52-2890	Bushing - Flanged	2	
49	R99-2087	99-2087	Spacer	1	

All original equipment manufacturers names and part numbers are used for identification purposes only, and we are in no way implying that our products are original equipment parts. Prices subject to change without notice.



# Replaces Toro Greensmaster Flex 21 Parts

*DPA Cutting Unit - Model 04200 (Serial up to 230999999)  
Reel & Bedknife*



Item No	R&R Part No.	OEM Part No.	Description	Qty Req	Order Quantity
51	<b>R93-8064</b>	93-8064	Decal - Warning	1	
52	<b>R253-120</b>	253-120, 253-42	Seal	1	
53	<b>R105-9943</b>	105-9943	Washer - Thrust	1	
54	<b>R99-2047</b>	99-2047	Bushing - Bronze	2	
55	<b>R150625</b>	105-9945, 99-3801	Seal	4	
56	<b>R106-5363</b>	106-5363	Shaft - Adjusting - Bed Bar - Stainless	2	
57	<b>R107-3233</b>	107-3233	Seal - Reel	4	
58	<b>R32151-92</b>	32151-92	Retaining Ring	2	
59	<b>R99-3757</b>	99-3757	Coupling - Flex	1	
60	<b>R32121-69</b>	119-4033, 120-8095, 32121-69	Pin - Roll 1/4 x 1-1/4	2	
61	<b>R251-336</b>	251-336	Bearing	2	
62	<b>R99-2079</b>	99-2079	Spacer	1	
63	<b>R104-0532</b>	104-0532	Washer - Pulley	1	
64	<b>R104-2610</b>	104-2610	Nut - HF M12 x 1.75	2	
65	<b>R108-3150</b>	106-8435, 108-3150	Sleeve Assy - Reel	2	
66	<b>R107-3238</b>	107-3238	V-Ring - Reel	2	
67	<b>R107-3228</b>	107-3228	Spacer - Seal	1	
68	<b>R108-3162</b>	108-3162	Spacer	1	

All original equipment manufacturers names and part numbers are used for identification purposes only, and we are in no way implying that our products are original equipment parts. Prices subject to change without notice.



# Replaces Toro Greensmaster Flex 21 Parts

DPA Cutting Unit - Model 04200 (Serial up to 230999999)  
Reel & Bedknife



Item No	R&R Part No.	OEM Part No.	Description	Qty Req	Order Quantity
69	<b>R20-9500</b>	20-9500	Washer	1	
70	<b>R33103-016</b>	33103-016, 93-5919	Screw-HHF	4	
<i>Tech Note: Ser# 240001001-270999999:</i>					
70	<b>R110-3986</b>	110-3986, 48-8870, 56-6380	Screw - M6 x 1.0 x 20mm	3	
<i>Tech Note: Ser# 220000001-240001001:</i>					
71	<b>R33125-045</b>	33125-045	Bolt - Carriage M10-1.5 x 45	2	
72	<b>R33104-020</b>	33104-020	Bolt - Hex Washer HD	4	
73	<b>R32151-51</b>	32151-51	Retaining Ring	1	
74	<b>R444850</b>	3296-59	Nut - 3/8-16 Jam Center Lock	2	
74	<b>R3296-59</b>	3296-59	Locknut - 3/8-16 Nylon Jam	2	
75	<b>R33114-016</b>	33114-016, 42-9230, 42-9270, 48-7680, 48-7690, 48-7700	Bolt - Hx HD 8mm x 1.25 x 15	1	
76	<b>R338763</b>	107-3205	Seal	1	

All original equipment manufacturers names and part numbers are used for identification purposes only, and we are in no way implying that our products are original equipment parts. Prices subject to change without notice.