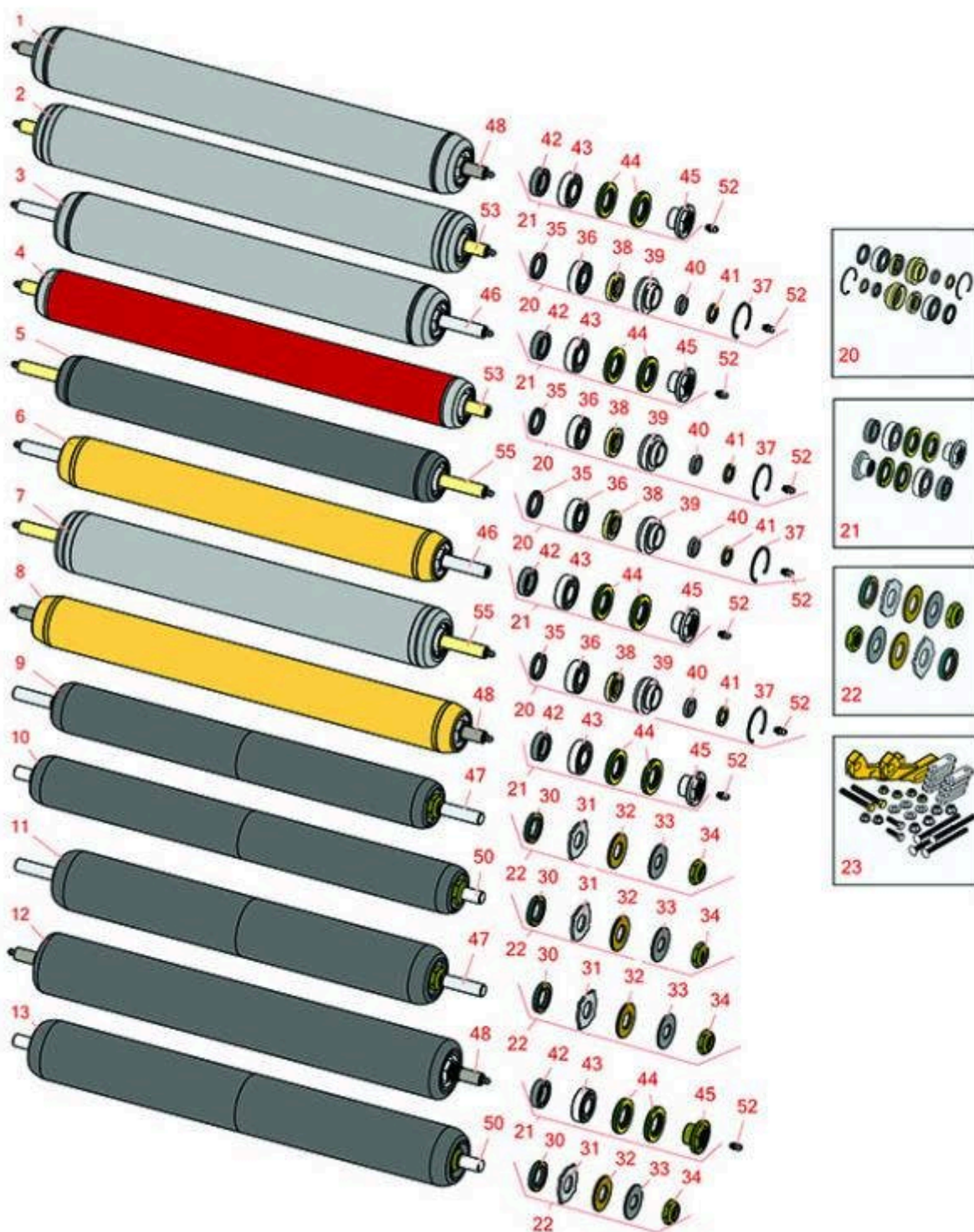




## Replaces Toro Reelmaster 5410G Parts

DPA Cutting Unit with 5" Reel - Model 03694 & 03695  
Rear Rollers



All original equipment manufacturers names and part numbers are used for identification purposes only, and we are in no way implying that our products are original equipment parts. Prices subject to change without notice.



## Replaces Toro Reelmaster 5410G Parts

DPA Cutting Unit with 5" Reel - Model 03694 & 03695  
Rear Rollers



Item No	R&R Part No.	OEM Part No.	Description	Qty Req	Order Quantity
<b>R&amp;R Rollers</b>					
1	<b>R114-5415</b>	114-5415	Roller - Smooth Tubular Steel	0	
<i>Detail Description: Constructed with a through shaft, this heavy duty roller uses greasable stainless ball bearings. (2008 &amp; Up):</i>					
2	<b>R107-4024</b>	107-4024	Smooth Tubular Steel Roller - Long	0	
<i>Detail Description: Constructed with a through shaft, this heavy-duty roller uses greasable ball bearings. (2006 - 2007):</i>					
3	<b>R114-5417</b>	114-5417	Roller - Smooth Solid Steel	0	
<i>Detail Description: Constructed with a through shaft, this heavy-duty roller uses greasable stainless ball bearings. (2008 &amp; Up):</i>					
4	<b>R107-4040</b>	107-4040	Roller - Smooth Tubular Steel	0	
<i>Detail Description: Constructed with a through shaft, this heavy-duty roller uses greasable ball bearings. (2006 - 2007):</i>					
5	<b>R110-4066</b>	110-4066	Roller - Smooth Tubular Steel	0	
<i>Detail Description: Constructed with a through shaft, this heavy-duty roller uses greasable ball bearings. (2006 - 2007):</i>					
6	<b>R114-5406</b>	114-5406	Roller - Smooth Tubular Steel - Short	0	
<i>Detail Description: Constructed with a through shaft, this heavy-duty roller uses greasable stainless ball bearings. (2008 &amp; Up):</i>					
7	<b>R110-4065</b>	110-4065	Roller - Smooth Tubular Steel	0	
<i>Detail Description: Constructed with a through shaft, this heavy-duty roller uses greasable ball bearings. (2006 - 2007):</i>					
8	<b>R114-5404</b>	114-5404, 137-6107	Roller - Smooth Tubular Steel - Long	0	
<i>Detail Description: Constructed with a through shaft, this heavy-duty roller uses greasable stainless ball bearings. (2006 - 2007):</i>					

All original equipment manufacturers names and part numbers are used for identification purposes only, and we are in no way implying that our products are original equipment parts. Prices subject to change without notice.



## Replaces Toro Reelmaster 5410G Parts

DPA Cutting Unit with 5" Reel - Model 03694 & 03695  
Rear Rollers



Item No	R&R Part No.	OEM Part No.	Description	Qty Req	Order Quantity
9	R1503935		Roller - Smooth UHMW Polyethylene	0	
<i>Detail Description: Machined from solid UHMW, this low maintenance roller uses a 1" solid stainless steel shaft and requires no grease. UHMW material prevents build-up of debris. (2006 &amp; Up):</i>					
10	R1503943		Roller - Smooth UHMW Polyethylene	0	
<i>Detail Description: Machined from solid UHMW, this low maintenance roller uses a 1" solid stainless steel shaft and requires no grease. UHMW material prevents build-up of debris. (2006 &amp; Up):</i>					
11	R1503940	1503940	Roller - Smooth UHMW Polyethylene	0	
<i>Detail Description: Machined from solid UHMW, this low maintenance roller uses a 1" solid stainless steel shaft and requires no grease. UHMW material prevents build-up of debris. (2006 &amp; Up):</i>					
12	R1503916		Roller - Fusion Smooth UHMW Polyethylene	0	
<i>Detail Description: Fusion Rollers combine the best features of our UHMW plastic rollers with a heavy duty internal bearing system. Machined from solid UHMW plastic that prevents build-up of debris. This roller has stainless precision ball bearings and double seals for added life. (2006 &amp; Up):</i>					
13	R1503946		Roller - Smooth UHMW Polyethylene	0	
<i>Detail Description: Machined from solid UHMW, this low maintenance roller uses a 1" solid stainless steel shaft and requires no grease. UHMW material prevents build-up of debris. (2006 &amp; Up):</i>					
<b>Overhaul Kits</b>					
20	R106-9606	106-9606	Overhaul Kit - Roller	1	
<i>Detail Description: Include 2 ea: R343667 Bearings, R253-70 Seals, R32120-62 Retaining Rings, R93-1251 Seals, R93-1252 Seals, R93-2931 Washers, R93-3007 Seals:</i>					
21	R114-5430	114-5430	Overhaul Kit - Roller	1	

All original equipment manufacturers names and part numbers are used for identification purposes only, and we are in no way implying that our products are original equipment parts. Prices subject to change without notice.



## Replaces Toro Reelmaster 5410G Parts

DPA Cutting Unit with 5" Reel - Model 03694 & 03695  
Rear Rollers



Item No	R&R Part No.	OEM Part No.	Description	Qty Req	Order Quantity
---------	--------------	--------------	-------------	---------	----------------

*Detail Description: Includes 4 ea.: R112-7494 Seals; 2 ea.: R302-5 Grease Zerks, R114-3717 Seals, R112-5290 Bearings & R114-3745 Locknuts:*

22	<b>R101399</b>		Overhaul Kit - UHMW 2 Pc Roller	1	
----	----------------	--	---------------------------------	---	--

*Detail Description: Fits all R&R 2-1/2" - 3-1/2" Dia. Black UHMW Plastic Rollers that do not use ball bearings.. Includes 2 ea.: R1503230 Star Washers, R1503470 Seals, R150333 Thrust Washers, R3296-15 Locknuts, R1503471 Bronze Thrust Washers:*

23	<b>R110-9600</b>	110-9600	High HOC Kit	1	
----	------------------	----------	--------------	---	--

*Detail Description: Includes 1 ea.: R120-0404, R120-0405 & 2 ea: R112-7451, R322-16, R445722 & 4 ea.: R106-9758, R104-8300, R453011, R104-8301 & 8 ea: R106-3925:*

### Other Parts Available

30	<b>R1503470</b>		Seal - Inner Wiper	2	
----	-----------------	--	--------------------	---	--

31	<b>R1503230</b>		Washer - Thrust Outer Keyed	2	
----	-----------------	--	-----------------------------	---	--

32	<b>R1503471</b>		Washer - Thrust SAE660 Bronze	2	
----	-----------------	--	-------------------------------	---	--

33	<b>R150333</b>		Washer - Flat Keyed Outer SS	2	
----	----------------	--	------------------------------	---	--

34	<b>R3296-15</b>	116-7306, 32118-5, 32127-23, 32127-47, 3296-15	Locknut - 3/4-16 Nylon Jam	2	
----	-----------------	--	----------------------------	---	--

35	<b>R93-3007</b>	93-3007	Seal	4	
----	-----------------	---------	------	---	--

36	<b>R343667</b>	109966, 251-6, 38-7820	Bearing - Ball	4	
----	----------------	------------------------------	----------------	---	--

37	<b>R32120-62</b>	32120-62	Ring - Retaining	2	
----	------------------	----------	------------------	---	--

38	<b>R93-1251</b>	93-1251	Seal	2	
----	-----------------	---------	------	---	--

39	<b>R93-1252</b>	93-1252	Seal - Outer	2	
----	-----------------	---------	--------------	---	--

40	<b>R253-70</b>	253-70	Seal	2	
----	----------------	--------	------	---	--

All original equipment manufacturers names and part numbers are used for identification purposes only, and we are in no way implying that our products are original equipment parts. Prices subject to change without notice.



## Replaces Toro Reelmaster 5410G Parts

DPA Cutting Unit with 5" Reel - Model 03694 & 03695  
Rear Rollers



Item No	R&R Part No.	OEM Part No.	Description	Qty Req	Order Quantity
41	<b>R93-2931</b>	93-2931	Washer - Roller Seal	2	
42	<b>R114-3717</b>	114-3717	Seal	2	
43	<b>R112-5290</b>	112-5290, 251--346, 251-346, 72-5430	Bearing - Stainless	2	
44	<b>R112-7494</b>	112-7494	Seal	4	
45	<b>R114-3745</b>	106-6939, 108-3151, 114-3745, 114-5411	Locknut - Bearing - Stainless	2	
46	<b>R114-5410</b>	114-5410	Shaft - Short - Rear Roller	1	
<i>Tech Note: 2008 &amp; Newer:</i>					
47	<b>R1503938</b>		Shaft - Short Rear Rollers	1	
48	<b>R114-5407</b>	114-5407	Shaft - Long Rear Roller	1	
50	<b>R1503949</b>		Shaft - Long Rear Rollers	1	
52	<b>R302-5</b>	21-6010, 302-11, 302-37, 302-47, 302-5, 302-57, 302-58, 302-6, 31-0300, 32-9660, 60-0800, 62-3880, 92-4181	Fitting - Grease	2	
53	<b>R107-3296</b>	107-3296, 99-5717	Shaft - Rear Long Roller	1	
55	<b>R110-4060</b>	110-4060	Shaft	1	

All original equipment manufacturers names and part numbers are used for identification purposes only, and we are in no way implying that our products are original equipment parts. Prices subject to change without notice.