

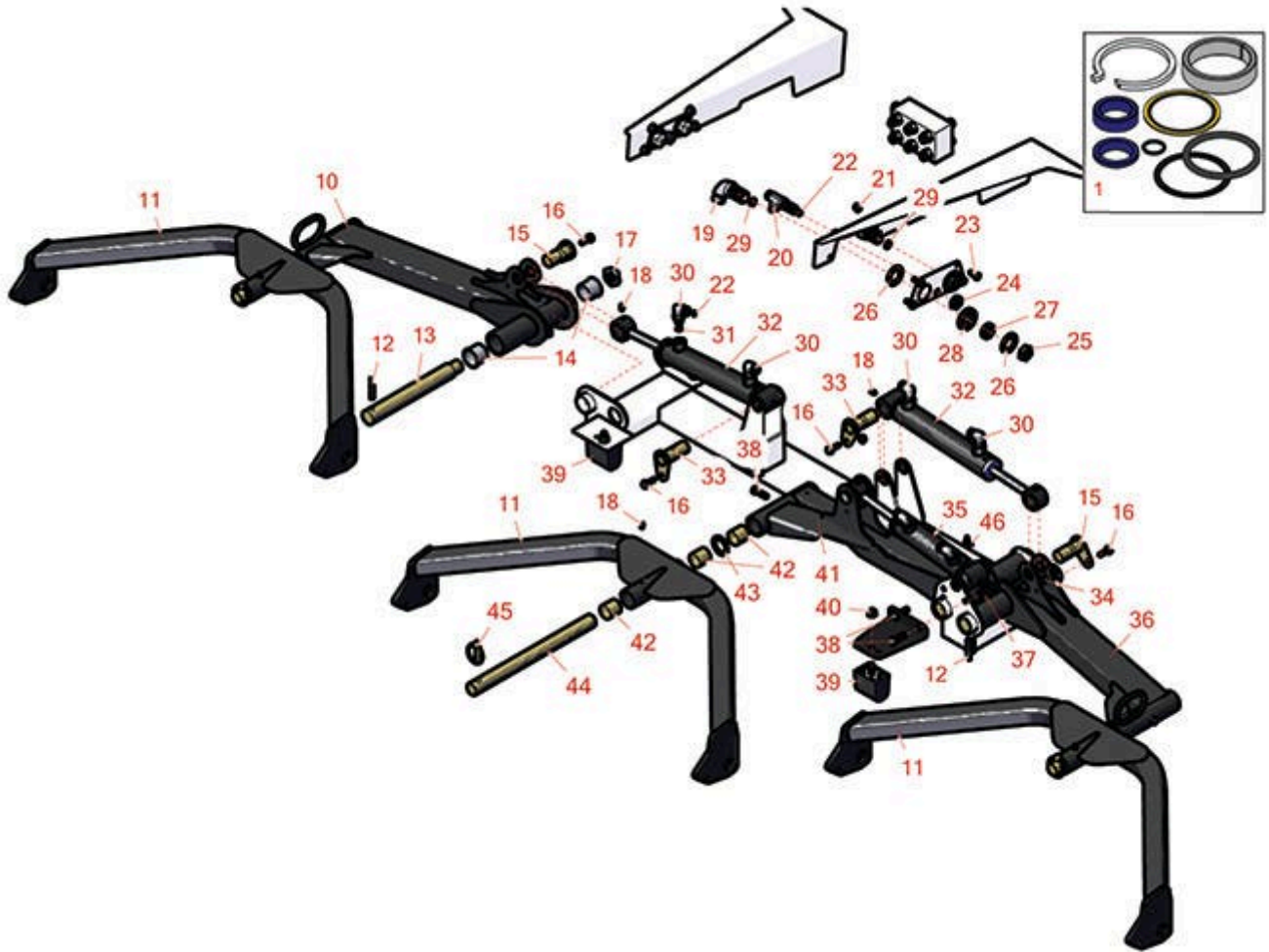


Replaces Toro Groundsmaster 4700-D

Parts

Traction Unit - Model 30868

Front Lift Arm



All original equipment manufacturers names and part numbers are used for identification purposes only, and we are in no way implying that our products are original equipment parts. Prices subject to change without notice.



Replaces Toro Groundsmaster 4700-D Parts

Traction Unit - Model 30868
Front Lift Arm



Item No	R&R Part No.	OEM Part No.	Description	Qty Req	Order Quantity
---------	--------------	--------------	-------------	---------	----------------

Overhaul Kits

1	R107-1977	107-1977, 131-7755	Seal Kit	2	
---	------------------	-----------------------	----------	---	--

Tech Note: Fits R107-1979 Cylinder:

Other Parts Available

10	R108-4034	108-4034	No. 5 Liftarm Assy	1	
11	R115-3453	104-5656, 115-3453	Carrier Frame Assy	3	
12	R32121-110	32121-110	Roll Pin - Slotted	3	
13	R95-7158	95-7158	Pin - Pivot	3	
14	R104-0015	104-0015, 104-8339	Bushing - Flanged	6	
15	R104-5525	104-5525, 131-4201, 131-4201`	Cylinder Pin Assy	3	
16	R3234-29	3234-17, 3234-29	Bolt - 5/16-18x1 Serr Hex	6	
17	R3296-49	3296-49	Locknut - 1 in 14	3	
18	R302-5	21-6010, 302-11, 302-37, 302-47, 302-5, 302-57, 302-58, 302-6, 31-0300, 32-9660, 60-0800, 62-3880, 92-4181	Fitting - Grease	11	

All original equipment manufacturers names and part numbers are used for identification purposes only, and we are in no way implying that our products are original equipment parts. Prices subject to change without notice.



Replaces Toro Groundsmaster 4700-D Parts

Traction Unit - Model 30868
Front Lift Arm



Item No	R&R Part No.	OEM Part No.	Description	Qty Req	Order Quantity
19	R340-72	340-72, 96-0865	Fitting-Bulkhead,	1	
20	R340-68	340-120, 340-68	Fitting - Tee - Bulkhead	1	
<i>Tech Note: 2002-2014 Only:</i>					
21	R445722	30-8980, 32128-2, 32128-20, 32128-20	Nut - Serrated Washer	8	
22	R237-22	107-8844, 237-22, 237-78	O-Ring	9	
<i>Tech Note: 2002-2014 Only:</i>					
23	R322-3	01-150-1420, 01-178-0506, 20-24-AD, 20-24-AGD, 322-3, 48-9270, 513339, 908017P	Bolt - Hex HD 5/16-18 x 3/4	8	
24	R340-70	340-70	Nut - Lock	2	
25	R340-74	340-74	Locknut - Bulkhead	5	
26	R69-9010	69-9010, 9-9010	Washer	10	
27	R69-9000	125-1984, 69-9000	Spacer	5	
28	R240-3	240-3	Grommet- Rubber	5	
29	R237-65	237-65, 237.65	O-Ring	6	

All original equipment manufacturers names and part numbers are used for identification purposes only, and we are in no way implying that our products are original equipment parts. Prices subject to change without notice.



Replaces Toro Groundsmaster 4700-D Parts

Traction Unit - Model 30868
Front Lift Arm



Item No	R&R Part No.	OEM Part No.	Description	Qty Req	Order Quantity
30	R340-77	340-100, 340-77, 95-7889	Hydraulic Fitting	6	
31	R237-42	237-42, 31-4160	O-Ring	6	
32	R107-1979	104-5527, 107-1979, 127-6429	Cylinder - Lift	2	
<i>Tech Note: 2002-2015 Only:</i>					
33	R105-9889	105-9889, 125-1906	Cylinder Pin Assy	3	
<i>Tech Note: 2002-2015 Only:</i>					
34	R104-8300	104-8300, 104-8300 , 119-4041	Locknut - 5/16-18 Flanged Y/Zinc	6	
35	R107-1980	104-5528, 107-1980, 127-6427	Cylinder - Lift	1	
<i>Tech Note: 2002-2015 Only:</i>					
36	R108-4033	108-4033	No. 4 Lift Arm Assy	1	
37	R104-8301	104-8301, 104-9301, 109-6658, 133-7570	Locknut - 3/8-16 Nylon Flanged	2	
38	R400264	01-150-0180, 01-178-0610, 20-48-AD, 20-48-AGD, 32-9160, 3224-3, 323-29, 323-7, 400264, 908035P	Bolt - Hex HD 3/8-16 x 1-1/4	5	

All original equipment manufacturers names and part numbers are used for identification purposes only, and we are in no way implying that our products are original equipment parts. Prices subject to change without notice.



Replaces Toro Groundsmaster 4700-D Parts

*Traction Unit - Model 30868
Front Lift Arm*



Item No	R&R Part No.	OEM Part No.	Description	Qty Req	Order Quantity
39	R87-3470	87-3470	Bumper - Rubber	2	
40	R33025-00	32025-00, 33025-00	Locknut - 10mm x 1.5 Jam	2	
41	R108-4032	108-4032	No. 1 Liftarm Assy	1	
42	R108-4000	108-4000	Bushing	12	
43	R3-6781	3-6781	Washer - Thrust - Castor Wheel	3	
44	R108-4023	108-4023	Shaft - Carrier - Pivot	3	
45	R283-71	283-71	Pin - Lynch Heavy Duty	3	
46	R302-60	302-60	Zerk - Grease 90 Deg.	1	

All original equipment manufacturers names and part numbers are used for identification purposes only, and we are in no way implying that our products are original equipment parts. Prices subject to change without notice.